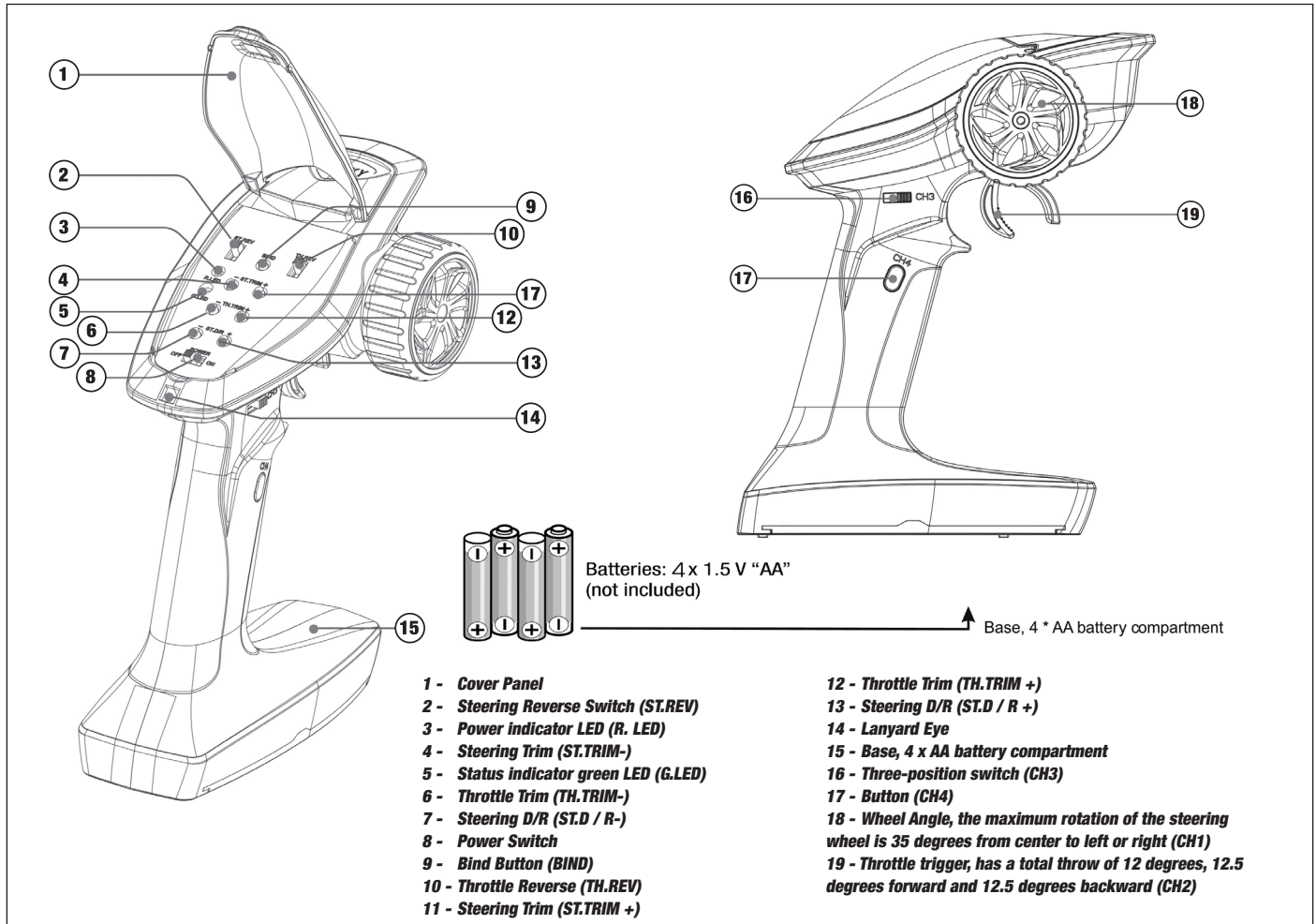


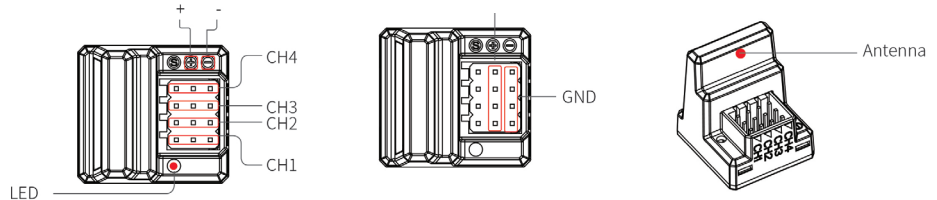


GETTING TO KNOW YOUR TRANSMITTER



Receiver Overview

To ensure the best signal quality make sure that the receiver is mounted in such a way that the antenna is in the upright, vertical position.



Battery installation

1. Open the battery compartment cover.
2. Insert 4 fully-charged AA batteries into the compartment. Make sure that the battery makes good contact with the battery compartment's contacts and that they are inserted with the correct polarity.
3. Replace battery compartment cover.

NOTE:

The transmitter features a low battery alarm: When the battery is lower than 4.2v, the G.LED on the panel will flash slowly.

Binding

To ensure the best signal quality make sure that the receiver is mounted in such a way that the antenna is in the upright, vertical position.

The transmitter and receiver have already been bound at the factory.

1. Turn on the transmitter while holding the bind button to enter bind mode. G.LED will start flashing quickly. Once in bind mode release the bind button.
2. The receiver will enter bind mode automatically when powered on.
3. Once binding is successful the receiver's LED will flash slowly and the transmitter's LED will remain solid after being rebooted.

NOTE:

When binding, put the transmitter into bind mode first, then the receiver.

Stick Calibration

This function is used to set the neutral position for throttle and steering.

Every transmitter is calibrated before leaving the factory, however if recalibration is required, please follow these steps:

1. Turn and hold the wheel as far clockwise as it will turn, push the throttle trigger all the way forward, then turn on the transmitter in calibration mode.
 - The R.LED and G.LED will flash twice.
2. Calibrate steering: Turn the wheel completely clockwise, then completely counter-clockwise.
 - When calibration is complete the R.LED will turn off.
3. Trigger calibration: Pull the trigger back then forward as far as it will go.
 - When calibration is complete the G.LED will turn off.
4. Once calibration is complete press the bind key to save and exit.