



Reality Craft

Simulator Troubleshooting Guide

Contents

Information Regarding This Guide & The Reality Craft Simulators	Page 3
Hardware & Software Requirements	Page 4
Plane Master Controller Setup Guide	Page 5
Heli Master Controller Setup Guide	Page 8
Troubleshooting Guide For Windows XP	Page 10
Troubleshooting Guide For Windows Vista and 7	Page 12
Windows Vista & 7 Guide To Compatibility Mode	Page 15
FAQ	Page 16
Contact Information	Page 20
Disclaimer	Page 21



Information Regarding This Guide & The Reality Craft Simulators

This guide is intended for use if you are having difficulty installing or running any of the Reality Craft Simulators.

This guide assumes that you are using the official Reality Craft PPM USB Controller. If you are having problems using your own controller you will need to obtain support from the controllers manufactures web site.

Follow the relevant parts of the guide that apply to your operating system, to ensure the best support.

All of the Reality Craft simulators have been thoroughly tested on Windows Vista and Windows 7 and work perfectly on both operating systems when installed on a clean system (not upgraded from XP or Vista).

Although Windows 98(second edition)/ME/2000 are not covered in this guide they are fully supported by all of the Reality Craft simulators.

Windows NT is not supported.

If you have lost your CD key for the RC Plane Master contact simssupport@cmldistribution.co.uk to obtain a new CD key.

Computers that have Virtual CD software (daemon tools / alcohol 120% or similar) may have problems running the simulator software, as it has copy protection software that may cause a conflict with Virtual CD software. It is recommended to uninstall any Virtual CD software in order to avoid any problems.

Before using this guide please make sure you agree with the Terms and Conditions on Page 21.



Please note: Older versions of the simulator software CD's are not compatible with Windows Vista / 7. You will need to purchase a new CD from www.realitycraftsales.com



Hardware & Software Requirements

Requirements for the following Flight Simulators:

- Heli Master Simulator
- Plane Master Simulator
- Flight Master Extreme 64

System Requirements		
Hardware / Software	Minimum	Recommended
Operating System	Windows 98/Me/2000	Windows XP (x86) Vista / 7 (x86 / x64)
Processor	Pentium 1 GHz or equivalent	1 GHz P4 Processor or Higher
RAM	128 MB	256 MB
Video Card	64 MB (DirectX 8 compatible)	128 MB (DirectX 9 compatible) Nvidia or ATI Graphics Card
DirectX	DirectX 8	Direct X 9
Hard Disk Space	400 MB	600 MB
CD-ROM Drive	2x Speed	2x Speed
Sound Card	(Optional) DirectX 8 compatible	(Optional) DirectX 9 compatible
Keyboard & Mouse	DirectX 8 compatible	DirectX 8 compatible
Controller	Keyboard, Joystick or USB Controller	Keyboard, Joystick or USB Controller



If your computer does not meet the minimum requirements, we cannot guarantee that the simulators will work correctly.

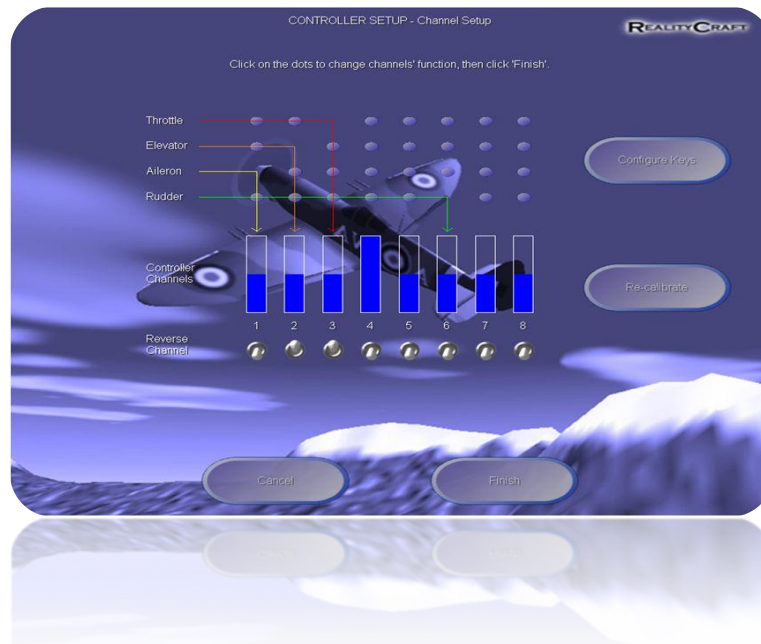
Please note: That if your computer does not meet the minimum requirements, we cannot guarantee that the simulators will work correctly.



Control Assignments For The RC Plane Master

When setting up your controller, remember to make sure that it is plugged in and switched on.

The controller setup screen can be reached from the by clicking the single head & shoulders icon  from the Main Menu, then clicking the transmitter icon  from the One Pilot Options Menu.



Follow the onscreen instructions and you will arrive at the screen pictured above (if you are using or choose to use the keyboard then you will be taken to the Configure Keys Menu instead).

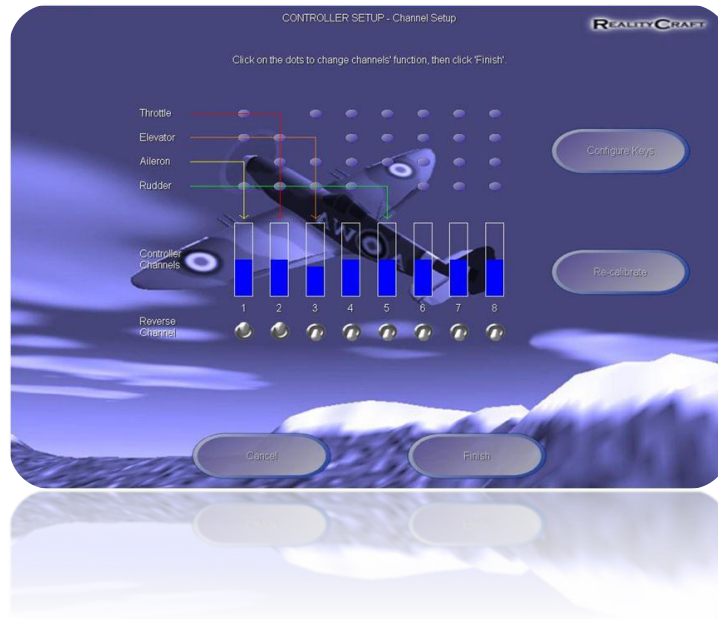
1. The “Dots” located at the top of the screen indicate which channel being received from your controller is being used to control each plane action when in flight. If you move your throttle stick up and down and find that blue bar number 2 moves, then in the throttle row, you should click on the dot above blue bar number 2. You should repeat this for elevator, aileron and rudder controls as well.
2. The blue bars bellow; indicate the values being received from the currently selected controller.
3. If you find that when you move an controller stick, it has the opposite effect on the plane than you expected (e.g. you move the throttle stick up, and the plane slows down, or you move the aileron stick right, and the plane rolls left), then you need to click the button along the 'Reverse Channels' row that is below the blue bar that corresponds to the plane action. If this is already selected, then unselect it by clicking on it.

Continue to next page...

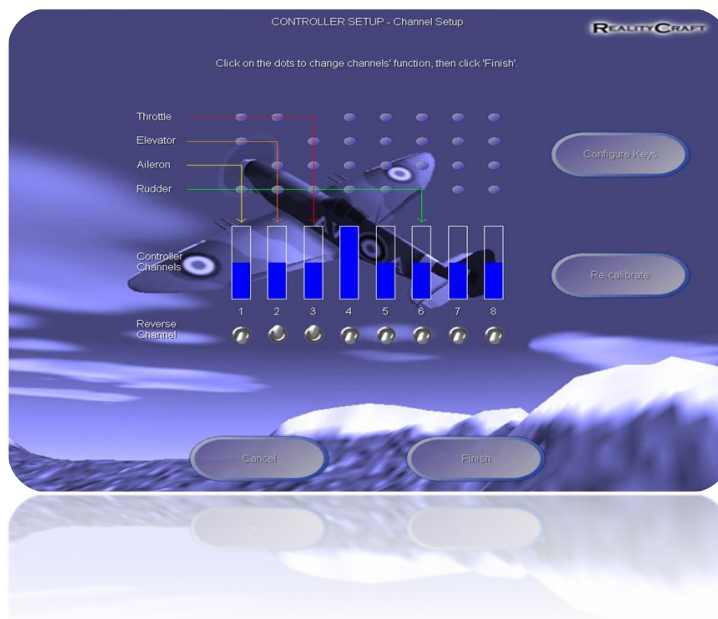
4. There are many keys available for use when flying in RC Plane Master. Click the 'Configure Keys' button to change which keys perform which actions from the Configure Keys Menu.
5. Ideally, when your controller movements are maximum; the corresponding blue bar should either fill the white rectangle completely or be completely empty. If they do not come close to this, you need to click this button. You will be asked to centre all of the controls on your controller (this includes any sliders). Do this and then click the 'Next' button. Now you should move all of the controls to their maximum extents several times until the blue bars move satisfactorily in relation to the control movements. Now click 'Finish' and your controller will have been calibrated.
6. If you change your mind and do not want the settings you have made to take effect, click 'Cancel' to exit this screen without confirming the changes you have made.
7. When you have finished setting up your controller, click 'Finish' to confirm your settings.

Continue to next page...

For a **Mode 1** controller set the control assignments to the same as in the picture below:



For a **Mode 2** controller set the control assignments to the same as in the picture below:



Setup of the control assignments is now complete.

Please note: That these instructions have been written for the official Reality Craft USB Controller. Therefore control assignments may vary.



Control Assignments For The RC Heli Master

When setting up your controller, remember to make sure that it is plugged in and switched on (if necessary) before reaching this menu.



1. Pick your controller, Click the arrows at the top to pick the controller you want to use. You should be able to pick between the keyboard and any joysticks or USB interfaces that are plugged in. Note: If your controller does not appear here, exit the simulator, make sure your controller is plugged in before running the simulator and then run the simulator again.
2. Calibrating your controller, the red bars indicate the live values being received from your controller. When you move a control on your controller, one of these red bars should move in unison with it. You should be able to move the red bar to near completely full or completely empty depending on the direction. If not click on the Calibrate button and follow the onscreen instructions.
3. Assign your controls, Move your controls and see which movements correspond to the numbered channel indicators. Take the control you wish to use for the throttle and see which numbered channel it is. Now click on the circle that is vertically above that channel AND also horizontally in line with the word 'Throttle'. Repeat this process for the pitch, roll and yaw controls.
4. Inverting your controls, If you find in-flight that a particular control has the opposite effect on the aircraft than you expect (e.g. you move the throttle stick up, and the aircraft slows down, or you move the roll stick right, and the aircraft rolls left), then come back to this menu and click on the circle above the relevant channel that is also in line with the word 'Invert'. If this is already selected, then unselect it by clicking on it.

Continue to next page ...

For a **Mode 1** controller set the control assignments to the same as in the picture below:



For a **Mode 2** controller set the control assignments to the same as in the picture below:



Setup of the control assignments is now complete.

Please note: That these instructions have been written for the official Reality Craft USB Controller. Therefore control assignments may vary.



Guide For Windows XP (Home / Business)

If you are having problems with any of the flight simulators, please follow this guide to see if it will fix the flight simulator software.

1. Uninstall the simulator software

How to remove an installed program

To remove a program that is installed on your computer, follow these steps:

1. Click **Start**, click **Control Panel**, and then double-click **Add or Remove Programs**.
2. In the **Currently installed programs** box, click the program that you want to remove, and then click **Remove**.
3. If you are prompted to confirm the removal of the program, click **Yes**.

2. Perform a disk cleanup

Remove Files Stored on Your Hard Disk

To remove files stored on your hard disk that you no longer use, follow these steps:

1. Click **Start**, and then click **My Computer**.
2. Right-click the disk in which you want to free up space, and then click **Properties**.
3. Click the **General** tab, and then click **Disk Cleanup**.
4. Click the **Disk Cleanup** tab (if it is not already selected), click to select the check boxes next to the files that you want to remove, and then click **OK**.
5. Click **Yes** to proceed with this action, and then click **OK**.

3. Defragment disk drives

1. Open My Computer.
2. Right-click the local disk volume that you want to defragment(c: Drive), and then click **Properties**.
3. On the **Tools** tab, click **Defragment Now**.
4. Click **Defragment**.

Continue to next page ...

4. Update your graphics drivers from your manufacturer's website

- If you have an **Nvidia** GeForce card, go to <http://www.nvidia.com.uk>
- If you have an **ATI** card go to <http://support.amd.com>
- If you have a **different make** then you will need to find your manufacturers website.

We recommend that you have either an Nvidia or ATI graphics card to ensure the best performance of the simulator.

5. Update DirectX



Download and install the latest version of DirectX from Microsoft's website: <http://www.microsoft.com/games/en-US/aboutGFW/pages/directx.aspx>

6. Install the flight simulator software

Follow the install procedure as directed from the CD.

Please note: If problems persist contact CML Distribution on 01527 575349 and ask for Reality Craft support.





Guide For Windows Vista & 7

If you are having problems with any of the flight simulators, please follow this guide to see if it will fix the flight simulator software.



1. Uninstall the simulator software

To uninstall or change a program

1. Open Programs and Features by clicking the **Start** button , clicking **Control Panel**, clicking **Programs**, and then clicking **Programs and Features**.
2. Select a program, and then click **Uninstall**. Some programs include the option to change or repair the program in addition to uninstalling it, but many simply offer the option to uninstall. To change a program, click **Change** or **Repair**.  If you're prompted for an administrator password or confirmation, type the password or provide confirmation.

2. Perform a disk cleanup

To reduce the number of unnecessary files on your hard disk to free up disk space and help your computer run faster, use Disk Cleanup. It removes temporary files, empties the Recycle Bin, and removes a variety of system files and other items that you no longer need.

1. Open Disk Cleanup by clicking the **Start** button , clicking **All Programs**, clicking **Accessories**, clicking **System Tools**, and then clicking **Disk Cleanup**.
2. In the **Disk Cleanup Options** dialog box, choose whether you want to clean up your own files only or all of the files on the computer.  If you are prompted for an administrator password or confirmation, type the password or provide confirmation.
3. If the **Disk Cleanup: Drive Selection** dialog box appears, select the hard disk drive that you want to clean up, and then click **OK**.
4. Click the **Disk Cleanup** tab, and then select the check boxes for the files you want to delete.
5. When you finish selecting the files you want to delete, click **OK**, and then click **Delete files** to confirm the operation. Disk Cleanup proceeds to remove all unnecessary files from your computer.

3. Update your graphics drivers from your manufacturer's website

- If you have an **Nvidia** GeForce card, go to <http://www.nvidia.com.uk>.
- If you have an **ATI** card go to <http://support.amd.com> .
- If you have a **different** one then you will need to find your manufacturers website

Continue to next page ...


4. Update DirectX

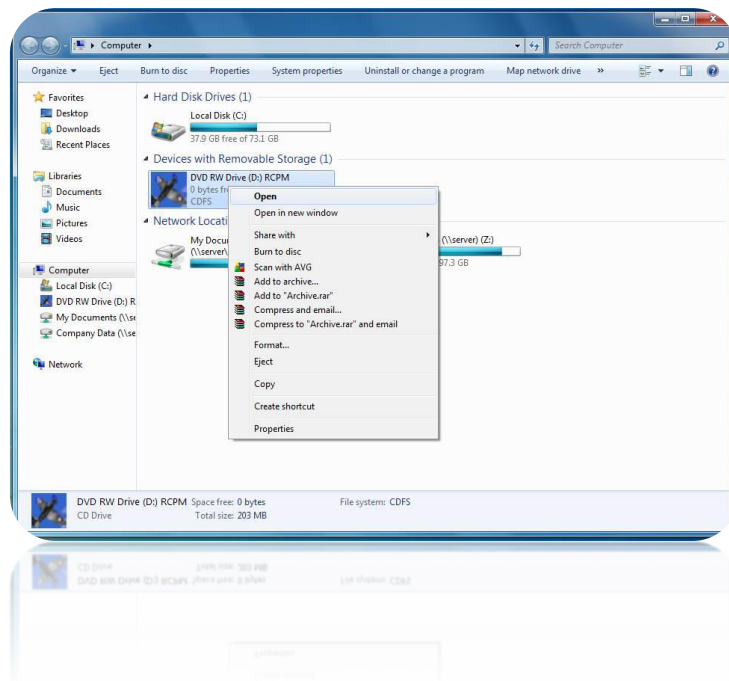



Download and install the latest version of DirectX from Microsoft's website:
<http://www.microsoft.com/games/en-US/aboutGFW/pages/directx.aspx>

5. Install the flight simulator software

Follow this install procedure and not one as directed from the CD:

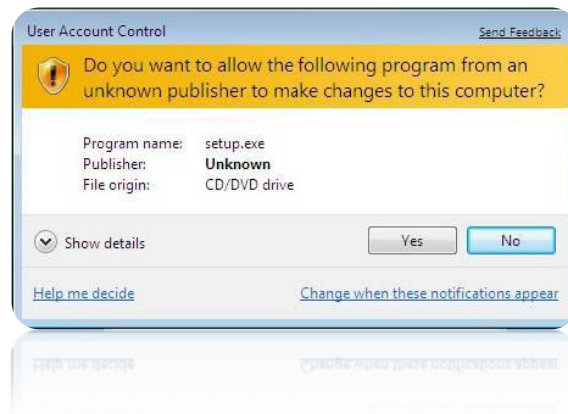
1. Insert the simulator software CD into the computers **disk drive**.
2. If any prompts appear to install the software **close them**.
3. Click on the **start** button , then click on **“Computer”**
4. Select and **Right** click on the CD Drive were the simulator software is located, and then click on **“Open”**.



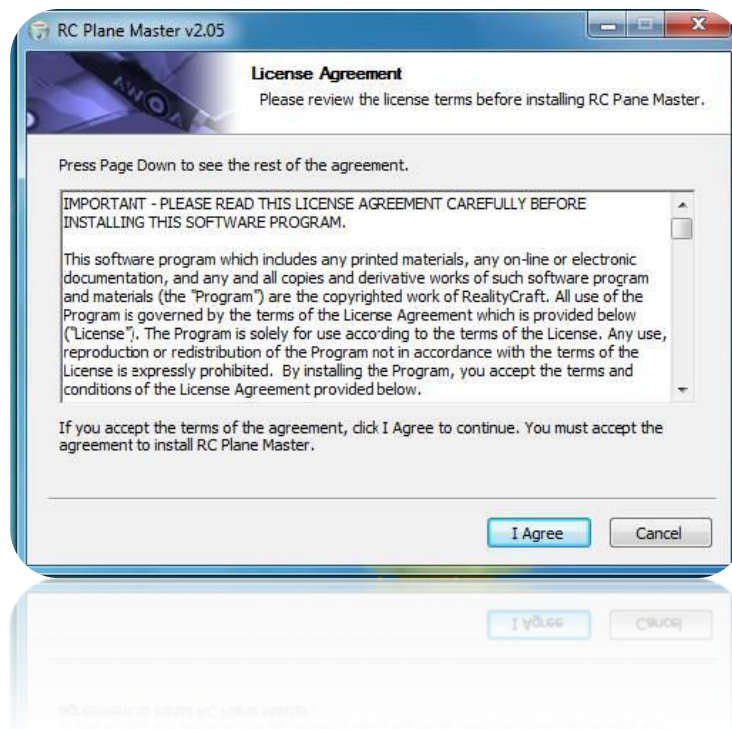
5. Now select and **right** click on the file named **“setup”**, on the menu click on **“ Run as administrator”**.

Continue to next page ...

6. A security prompt will appear, simply click on “**Yes**” to continue.



7. The simulator's setup window will now open; simply follow the on screen instructions to finish the installation.



Setup is now complete.

Please note: If problems persist contact CML Distribution on 01527 575349 and ask for Reality Craft support.




Windows Vista & 7 Guide To Compatibility Mode

Running the Simulators in compatibility mode on Windows Vista / 7, may help improve the reliability and performance of the simulators under certain conditions.

Method 1: Run the program in compatibility mode

When you select the compatibility mode option, Windows Vista emulates the selected operating system when you run that particular program.



To run the program in compatibility mode, follow these steps:

1. Click **Start** , and then type the name of the simulator in the **Start Search** box.
2. In the **Programs** list, right-click the program name, and then click **Properties**.
3. On the **Compatibility** tab, click to select the **Run this program in compatibility mode for** check box.
4. In the list, select Windows XP, and then click **OK**.

If the program still does not work correctly, go to the next method.

Method 2: Run the program as an administrator

To run the program as an administrator, follow these steps:

1. Click **Start** , and then type the name of the program in the **Start Search** box.
2. In the **Programs** list, right-click the simulator that you are troubleshooting, and then click " **Run as administrator**". If you are prompted for an administrator password or for a confirmation, type the password, or click **Continue**.

Please note: If problems persist contact CML Distribution on 01527 575349 and ask for Reality Craft support.



Frequents Asked Questions

How do I download extras for RC Plane Master?

You need a member's login and password to get access to the free downloads. Register for downloads at <http://www.realitycraft.com/products/sim/rcplanemaster/register.htm>. Please make sure your spam blocker will accept Reality Craft emails for this to work.

How do I download extras for RC Flight Master eXtreme64?

You need a member's login and password to get access to the free downloads. Register for downloads at <http://www.realitycraft.com/products/sim/rcflightmaster/register.htm>. Please make sure your spam blocker will accept realitycraft.com emails to get your login information.

My CD Key is not recognised when trying to download extras.

Log into the members area and follow the instructions precisely.

How do I install the downloads for RC Plane Master?

If the code starts with '74PB' then it's a plane master code. You need to register under the plane master page. Typing the code incorrectly will also make it fail.

I can't remember my login for RC Plane Master.

Put your email address in the form and you will be sent a reminder at <http://www.realitycraft.com/products/sim/rcplanemaster/forgotPassword.htm>.

Can I change my password?

No. For security purposes you must use your original password.

I have reinstalled RC Plane Master and it is asking for a new activation code. How do I get one?

Log into the members area and use the form at the bottom of the screen. If your email address has changed then use the Change Email Address form first. <http://www.realitycraft.com/products/sim/RCPlaneMaster/members/index.htm>

I can't remember my login for RC Flight Master.

Put your email address in the form and you will be sent a reminder at <http://www.realitycraft.com/products/sim/RCFlightMaster/forgotPassword.htm>.

My email address has changed. How do I update it for the member's area?

Log into the members area and use the change email address form.

The password you have supplied me for the members area does not work.

The system is automated and so the login cannot be wrong. Please make sure that you enter both the user name and password precisely as represented in the email. On rare occasions security software such as ad-blockers have been reported as interfering with the login process. Any such software may need to be temporarily disabled.

There are no instructions. How do I get help? Is there a manual?

For RC Plane Master open the help at Start->Programs->RC Plane Master->Manual.
For RC Flight Master eXtreme64 click on the question mark icon (?).

When I use my controller it moves erratically.

Recalibrate the controller. Go to the controller menu and select your controller. Then click Re-calibrate. Follow the instructions as they appear. For more information on setting up your controller check out the relevant section in the manual.

The controls move in the wrong direction.

Go to the controller menu and click on the toggle switch to reverse the channel on the axis concerned. For more information on setting up your controller check out the relevant section in the manual.

Only some of the sticks (axis) work on my controller.

Go to the controller menu and set up the axis correctly. To do this click on the bullets/dots to line up the axis with the correct function. Move the sticks to see the bars move. Please note, the numbers below the bars DO NOT correspond to the numbers on your radio receiver. For more information on setting up your controller check out the relevant section in the manual.

I have an interface I use for a different simulator. Will it work with your simulator?

Unlikely. Ones that will are:

FMS serial cable with 9600 baud rate.

Any cable that works as a Windows joystick and appears in Control Panel->Game Controllers.

FMS parallel cable with Windows 2000/XP ONLY.

Real Flight Interlink Plus (controller only, not transmitter adapter). You may need to unplug the controller and plug it back in whilst the PC is turned on for Windows to find it.

Ones that definitely won't are:

Any Ikarus interface, e.g. Aerofly, easyFly, etc.

Tru-Flight

Reflex

RealFlight transmitter interfaces

FMS serial cable with 19200 baud rate

Any parallel cable with Windows 95/98/Me

My USB interface cable won't work.

Is it a Reality Craft cable? See I have an interface I use for a different simulator...

If it is a Reality Craft cable:-

If using a JR transmitter, do not switch it on. Most JR transmitters will only work with simulators when switched OFF. Be sure to unplug the transmitter when finished to avoid draining the battery.

If using Windows 98, then you will need an original Windows 98 CD to install the USB driver.

Open the Windows game controllers panel at

Start-> Control Panel-> Printers and Other Hardware-> Game Controllers.

You should see the controller in the list. If not, then it is not plugged in or not working.

Run the simulator and go to the controller menu. Make sure the controller is plugged in and switched on (switched off if it's a JR radio). Click change controller and follow the instructions. Finally, connect the axis to the appropriate radio functions by clicking the bullets (dots). See the manual (help file) for more information on setting up your controller.

Some of the planes/gliders won't take off. They stay still on the ground.

That's because some don't have wheels. Press F9 or F10 to hand or catapult launch. Click on the keyboard icon and check out the manual to see what keys are available.

Do I have to put the CD in every time I run the program?

Yes. It is very common practice for entertainment/multimedia software. The alternative is to force people to buy high cost hardware (i.e. USB controller/interface) with the software.

I am downloading the free photo tool from your website. Internet Explorer shows a SECURITY WARNING. Is this software safe? Are you a publisher I can trust?

Yes. These security warnings pop up all the time when downloading from the internet. As you have requested to download this item, and you have purchased the product, you can be sure the software is safe and has no viruses or spyware.

Can I use my transmitter with your USB interface?

Essentially, it works with ppm radios that have one the following buddy box (trainer socket) fittings:

3.5mm jack socket or a round 6 pin din socket.

Adapter is available for Sanwa/Airtronics 5 pin din socket.

Adapter is available for Futaba 6 pin square socket (new type).

Examples of radios that are compatible (this is not a full list as specifications are complex and changing all the time):

JR ppm radios: 3.5mm Mono Jack, Quattro, F400, F400EX, XF421EX, XF622, XF631, XP642, XP652, XP662, XP783, XP8103, X2610, 10 Series

Hitec ppm radios: round 6 pin din, Focus 4, Focus 6, Laser 4, Laser 6, Flash 4, 4X, 5, 5X, Prism 7, 7X, Eclipse 7

Futaba ppm radios: Conquest FM, FG FM, 4VF, 6VA, 6VH, 6DA, 6YF, 6YG, 6XA, 6XAs, 6XH, 6XHs, 7U, 8U, 9Z

Tower Hobbies: System 3000 4FM, 6FM

Cirrus: 900FM

With Sanwa 5 pin adapter:

Sanwa/Airtronics: Radiant RD6P, RD6H, RD6000 Series, Vanguard Series, VG4R,

VG6DR, VG6H, VG400, VG600

With Futaba square adapter:

Futaba: 9, 9C, 6EXA

Other compatible USB cables with more fittings and further information is available from <http://www.simblaster.com>, <http://www.milehighwings.com>, <http://www.rc-electronics.co.uk>.

I get an error similar to '16-bit subsystem error. Could not run application'.

This occurs when a file in your Windows installation has become missing or damaged. To fix the problem you will need your Windows operating system CD and to follow the instructions provided by Microsoft's help page:

<http://support.microsoft.com/default.aspx?scid=kb;en-us;324767>

I have lost objects from landscapes. I.e. the rings that you can fly through in chase mode...also items are missing from other landscapes.

Click on the spanner in the program to edit the graphics options and switch terrain objects back on.

On my screen, the models appear in monochrome only, not as the illustrations on the packaging and website. Also, the backgrounds are very plain, in colour but with no real detail, i.e., clouds and trees appear just as plain coloured squares.

You will need to update their graphics drivers. Please check that they have enough graphics memory. Also, try reducing the graphics options (uses less video memory).

Every time I restart the program, I have to readjust graphics settings, and recalibrate the controls to Mode 1.

All settings are saved when you exit the program. If it doesn't exit properly, they won't save.

Run the program, change the settings, then exit using the X icons on the screen. All settings are stored in the Windows registry, so make sure there are no security measures active on the PC that may prevent a program from writing to the registry.



Contact Information and Email Address

If you have any questions, queries or problems please do not hesitate to contact us...

REALITY CRAFT SALES

PO Box 13268

Bromsgrove

B60 9BQ

simsupport@cmldistribution.co.uk



Disclaimer

TERMS OF SERVICE

YOU ASSUME TOTAL RESPONSIBILITY AND RISK FOR YOUR USE OF THIS GUIDE; USE AT YOUR OWN RISK.

IT IS YOUR RESPONSIBILITY TO BACKUP ANY DATA THAT MAY BE LOST FOLLOWING THIS GUIDE.

BY USING THIS GUIDE, YOU ACKNOWLEDGE YOU ARE ACCEPTING ANY RESPONSIBILITY OF ANY DAMAGE OR HARM YOU MAY CAUSE TO YOUR PC.

DISCLAIMER OF WARRANTIES

YOU UNDERSTAND AND AGREE THAT YOUR USE OF THIS GUIDE AND ANY SERVICES OR CONTENT PROVIDED IS MADE AVAILABLE AND PROVIDED TO YOU AT YOUR OWN RISK. IT IS PROVIDED TO YOU AS IS AND WE EXPRESSLY DISCLAIM ALL WARRANTIES OF ANY KIND, IMPLIED OR EXPRESSED

CMLDISTRIBUTION & REALITY CRAFT MAKES NO WARRANTY, IMPLIED OR EXPRESS, THAT ANY PART OF THE SERVICE WILL BE ERROR-FREE, VIRUS-FREE, SECURE, ACCURATE, RELIABLE, NOR THAT ANY CONTENT IS SAFE IN ANY MANNER FOR DOWNLOAD. YOU UNDERSTAND AND AGREE THAT NEITHER US PROVIDES PROFESSIONAL ADVICE OF ANY KIND AND THAT USE OF SUCH ADVICE OR ANY OTHER INFORMATION IS SOLELY AT YOUR OWN RISK AND WITHOUT OUR LIABILITY OF ANY KIND.

LIMITATION OF LIABILITY

YOU EXPRESSLY UNDERSTAND AND AGREE THAT WE SHALL NOT BE LIABLE FOR ANY DIRECT, INDIRECT, SPECIAL, INCIDENTAL, CONSEQUENTIAL OR EXEMPLARY DAMAGES, INCLUDING BUT NOT LIMITED TO, DAMAGES FOR LOSS OF PROFITS, GOODWILL, USE, DATA OR OTHER INTANGIBLE LOSS (EVEN IF WE HAVE BEEN ADVISED OF THE POSSIBILITY OF SUCH DAMAGES), RESULTING FROM OR ARISING OUT OF (I) THE USE OF OR THE INABILITY TO USE THIS GUIDE.