

AWA
World Class Products by World Champions
INSIDE

HIGH PERFORMANCER/C MODEL

HXG

1/10 4WD COMPETITION ELECTRIC BUGGY KIT



INSTRUCTION MANUAL

Carisma[®]
RACING

Introduction

Thank you for your purchase of the Carisma Racing™ 4XS competition 4WD buggy kit. Designed in Germany by noted engineer Michael Vollmer, this model has spent over two years in design, development, and testing prior to release. It also represents a significant step for our company into the category of competition-class race cars, and I hope that you enjoy building and driving your new race car as much as we have enjoyed and learned from making it for you.

Carisma Racing

Safety, Precautions, and Warnings

As the user of this product, you are solely responsible for operating it in a manner that does not endanger yourself and others or result in damage to the product or the property of others.

This model is controlled by a radio signal that is subject to interference from many sources outside your control. This interference can cause momentary loss of control so it is necessary to always keep a safe distance in all directions around your model, as this will help to avoid collisions or injury.

- Always operate your model in an open area away from cars, traffic, or people.
- Avoid operating your model on the street where injury or damage can occur.
- Never operate the model out into the street or populated areas for any reason.
- Never operate your model with low transmitter batteries.
- Carefully follow the directions and warnings for this product and any optional support equipments (chargers, rechargeable battery packs, etc.) that you use.
- Keep all chemicals, small parts and anything electrical out of the reach of children.
- Moisture causes damage to electronics. Avoid water exposure to all equipments not specifically designed and protected for this purpose.

It is the buyer's responsibility to ensure safety precautions in operating this model. You are responsible for the assembly and operations of this model. Please read the manual thoroughly and always keep it at hand for all times for reference. ONLY use Carisma/Carisma Racing parts for maximum performance. 3rd party parts installation will immediately void warranty. Improper operations may caused personal or property damage. Carisma/Carisma Racing or our distributors are NOT responsible for the damage in any way resulting from Shipping, improper construction or improper use. By opening the box, the buying is accepting all resulting liabilities. In the event that that buying is NOT prepare to accept this liability. Please DO NOT OPEN THE BOX and return this kit in new, unassembled and unused condition to the place of purchase.

The 4XS is a High Competition, High Quality, 10th scale Electric Off Road Buggy Race Car for persons age 14 or order. THIS IS NOT A TOY. It is a precision racing chassis kit. Adult supervision is required at all times during assembly and operating. If in doubt, ask your fellow RC racers for advice or contact your local supports for assistant. We are constantly improving and developing and therefore the exact specifications of the kit may change from batch to batch without prior notice. This product contains a chemical known to the State of California to cause cancer and birth defects or other reproductive harm.

Carisma guarantees this model kit to be free from defects in both materials and workmanship at point of purchase. The total monetary value under warranty will NOT, at any case what so ever be exceed the cost of the original kit purchased. This warranty does not cover any components damaged by use or modifications or wear. Part or parts missing from this kit must be reported within 30days of purchase.

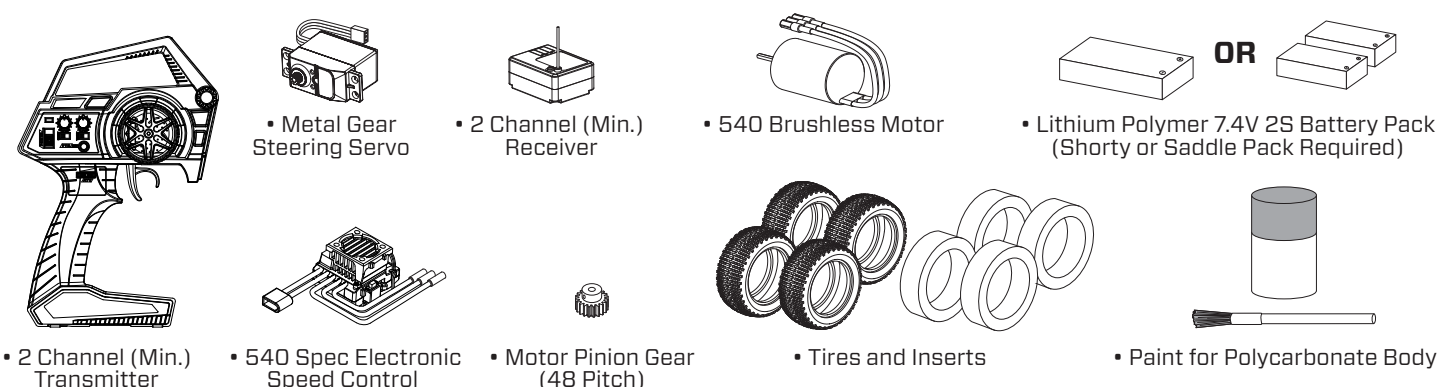
Proof of purchase must be sent at all time when applying for a claim under warranty. Should you find defective or missing part, contact your local distributor. Your local service and customer support will be your first point of contact. Always buy from your local stores where you can get the best customer supports.

In the event that your kit is purchased through carisma-shop.com. Please contact cs@matoys.com for all matters.

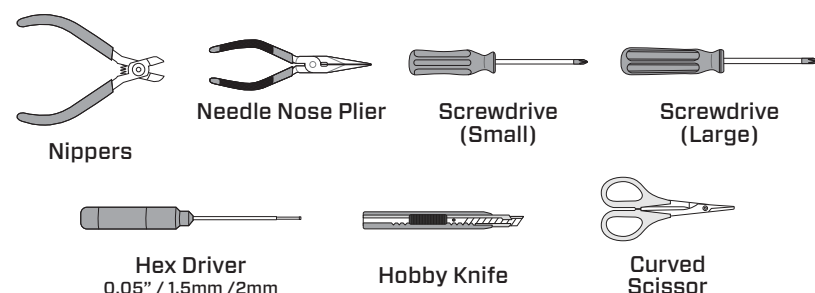
Kit Features

- Carbon Chassis, Top Deck, and Shock Stays
- Complete Ball Bearing set
- Precision-Machined Spring Steel components
- CNC-Machined Aluminum parts
- CV-style Front and Rear Driveshafts
- Revolution Design Ultra O-Rings used throughout
- AKA™ Racing Wheels
- All-Metal Precision Gear Differentials (3 INCLUDED)
- Adjustable Torque-Control Slipper Clutch
- Precision Coil-Over Aluminum Shocks
- Stylish Clear Polycarbonate Racing Body and Wing
- Adaptable to both Saddle and Shorty Battery Configuration
- Adjustable Chassis Dynamics and Settings
- Includes all Oils, Greases, Thread lock, and Fluids Required for Assembly
- Complete Set of Anti Roll Bars (Front and Rear)

Items Required For Completion



TOOLS (Hex Wrenches, Pliers, Hobby Knife, Soldering Iron, etc.)



IMPORTANT SYMBOLS



A STEP 1 - 7

BAG A / BEUTEL A
BORSA A / バッグ A



Diff Case
GTB4P0401
x 2pcs



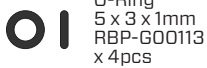
Diff Outdrive
TWSM00021
x 4pcs



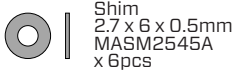
Shim
10.1 x 12 x 0.1mm
MASM2543A
x 10pcs



Ball Bearing
8x12x3.5mm
TWSM00093
x 4pcs



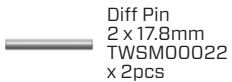
O-Ring
5 x 3 x 1mm
RBP-G00113
x 4pcs



Shim
2.7 x 6 x 0.5mm
MASM2545A
x 6pcs



Snap Ring A5
MASM2512A
x 6pcs



Diff Pin
2 x 17.8mm
TWSM00022
x 2pcs



Diff Spider Gear Carrier
TWSM00023
x 2pcs



Diff Spider Gear 12T
MASM2219A
x 6pcs



Diff Crown Gear 21T
MASM2218A
x 4pcs



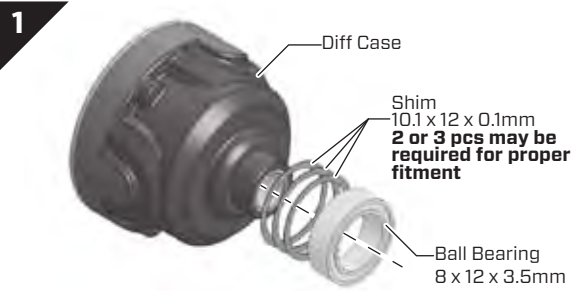
Diff Ring Gear 39T
MASM2216A
x 2pcs



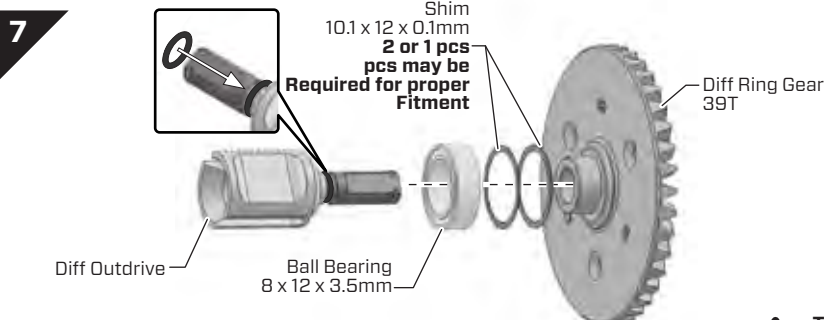
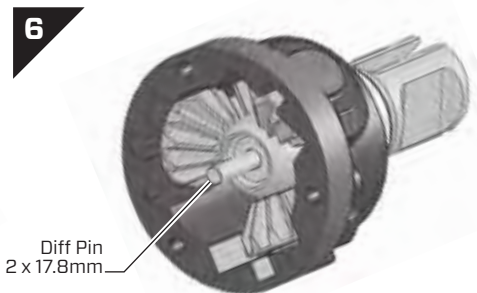
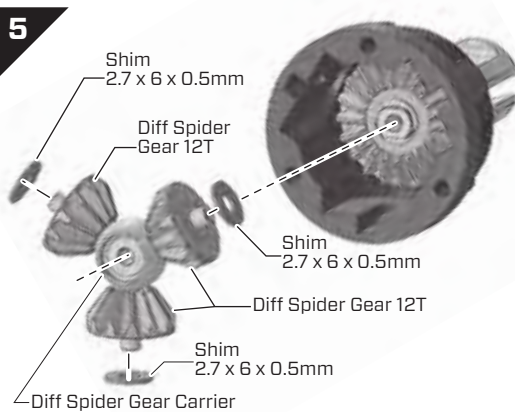
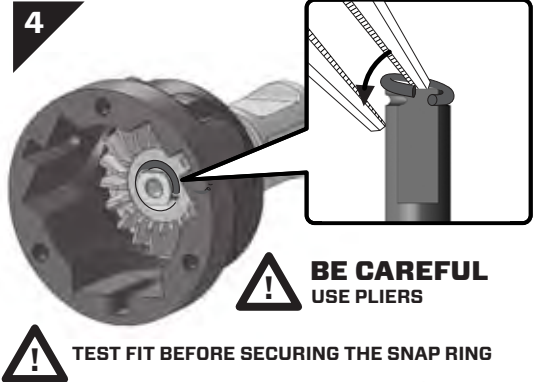
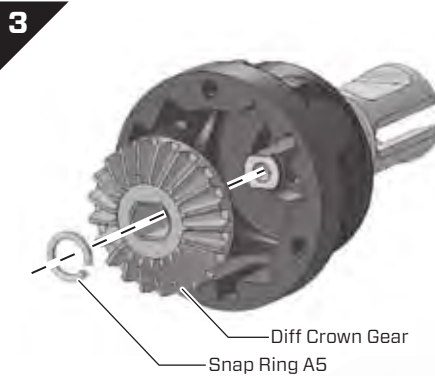
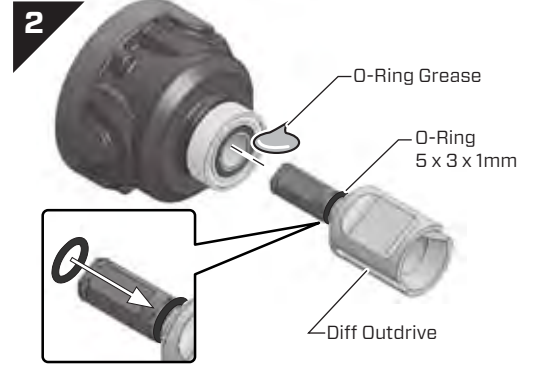
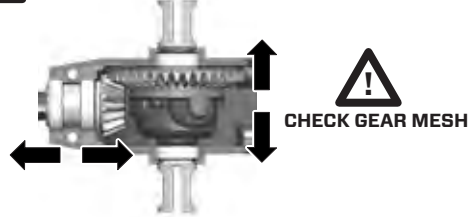
O-Ring Grease
CHM-G00057
(BAG R)

Front & Rear Gear Diff Assembly

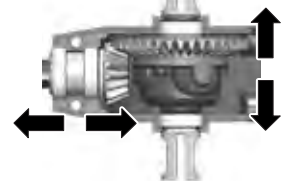
! MAKE TWO



! TEST FIT THE ASSEMBLY TO THE GEAR BOX BEFORE SECURING THE SNAP RING



! CHECK GEAR MESH



! TEST FIT THE ASSEMBLY TO THE GEAR BOX BEFORE SECURING THE SNAP RING

A

STEP 8 - 12

Front & Rear Gear Diff Assembly

BAG A / BEUTEL A
BORSA A / バッグ A



Diff Gasket
SPC-G00009
x 2pcs



Flat Head Screw
M2 x 10mm
TWSSW00006
x 6pcs

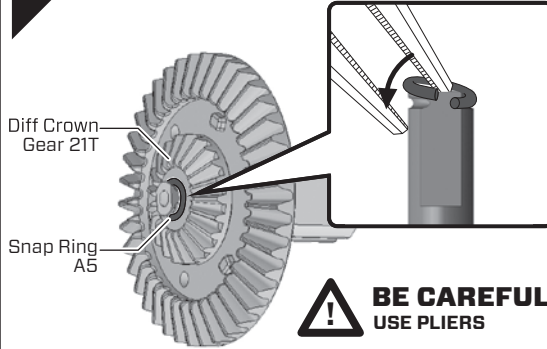


Diff Oil Back
3.5K cst
CHM-G00054
(For Rear Diff)



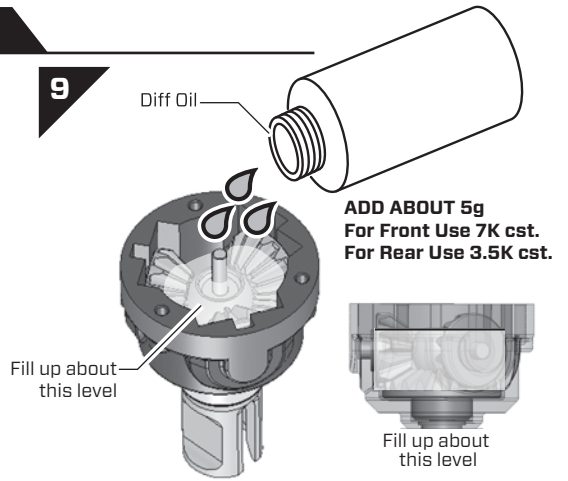
Diff Oil Middle
7K cst
CHM-G00055
(For Front Diff)

8

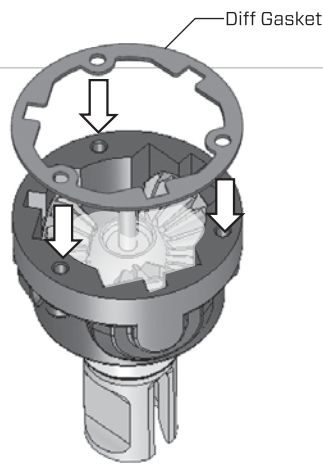


TEST FIT BEFORE SECURING THE SNAP RING

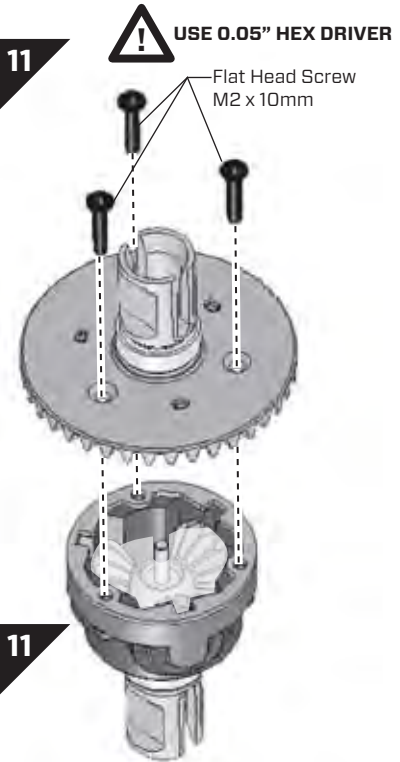
9



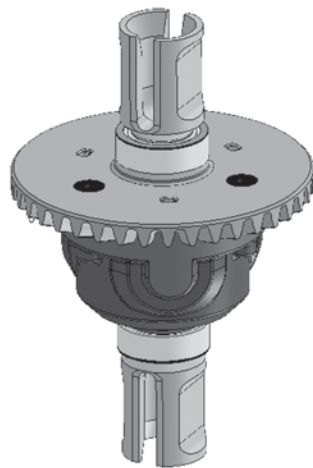
10



11



12



**Completed
Front / Rear
Gear Diff**

B1 STEP 1 - 4

Mid-Slipper Assembly

BAG B1 / BEUTEL B1
BORSA B1 / バッグ B1

Pin
2.5 x 11.8mm
TWSM00046
x 1pc

Pin
2.5 x 10mm
TWSM00045
x 1pc

Pin
2.5 x 8.8mm
TWSM00047
x 1pc

Ball Bearing
8 x 12 x 3.5mm
TWSM00093
x 1pc

Ball Bearing
5 x 10 x 4mm
TWSM00091
x 1pc

Slipper Bearing
Bushing
TWSM00070
x 1pc

Slipper Plate Carrier
TWSM00072
x 1pc

Slipper Plate A
TWSM00073
x 1pc

Slipper Plate B
TWSM00074
x 3pcs

Slipper Plate C
TWSM00075
x 1pc

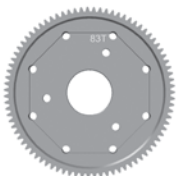
Slipper Preload Nut
TWSM00076
x 1pc

Slipper Spring
MASM2463A
x 1pc

Slipper Pad A
SPC-G00015
x 4pcs

Slipper Pad B
SPC-G00016
x 1pc

O-RING
12 x 8 x 2mm
RBP-G00112
x 1pc

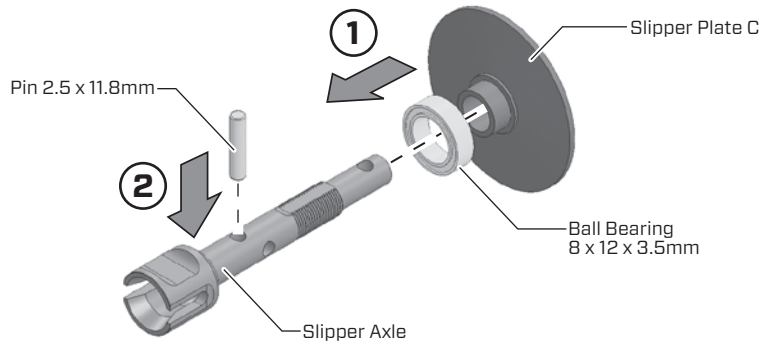


Spur Gear 83T
TWPRT00006
x 1pc

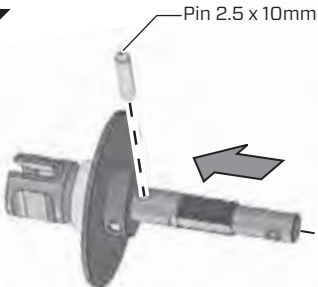
1



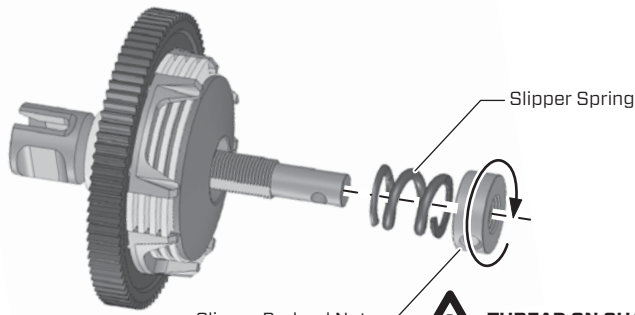
Slipper Axle
TWSM00069
x 1pc



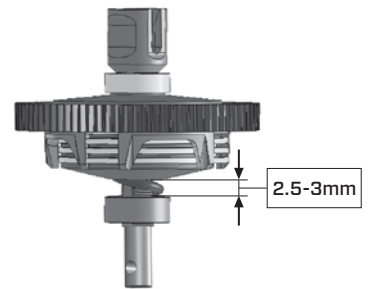
2



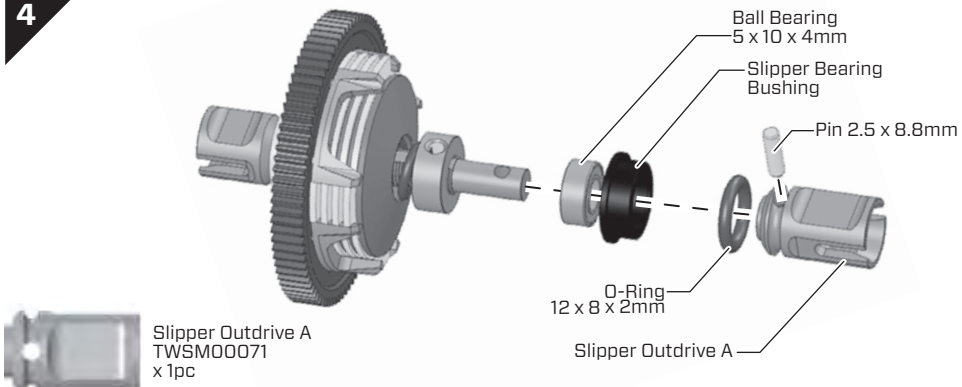
3



Slipper Preload Nut **THREAD ON SHAFT**



4



Slipper Outdrive A
TWSM00071
x 1pc

B1 STEP 5 - 6

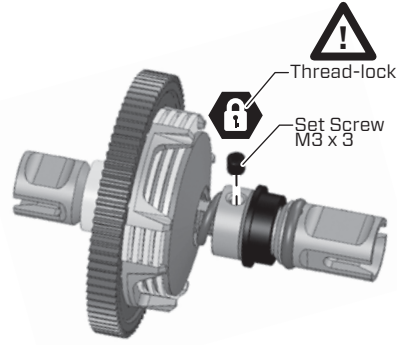
Mid-Slipper Assembly

BAG B / BEUTEL B
BORSA B / バッグ B

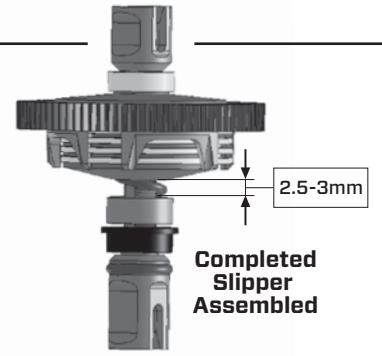
Set Screw
M3x3
TWSSW00013
x 1pc

Threadlock
CHM-G00059
(BAG R)

5



6



ROTATE THE PRELOAD NUT TO APPLY PRESSURE TO THE SLIPPER PLATES.

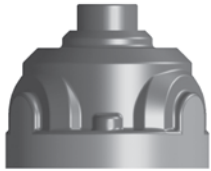
B2 STEP 1 - 5

Mid-Gear Diff Assembly

BAG B2 / BEUTEL B2
BORSA B2 / バッグ B2



Spur Gear 83T
TWPRT00006
x 1pc



Diff Case
GTB4P0401
x 1pc



Diff Spider Gear Carrier
TWSM00023
x 1pc



Mid Diff Spur Gear
Plate A
TWSM00038
x 1pc



Snap Ring A5
MASM2512A
x 2pcs



O-Ring
5 x 3 x 1mm
RBP-G00113
x 2pcs



Ball Bearing
8 x 12 x 3.5mm
TWSM00093
x 2pcs



Shim
2.7 x 6 x 0.5mm
MASM2545A
x 3pcs

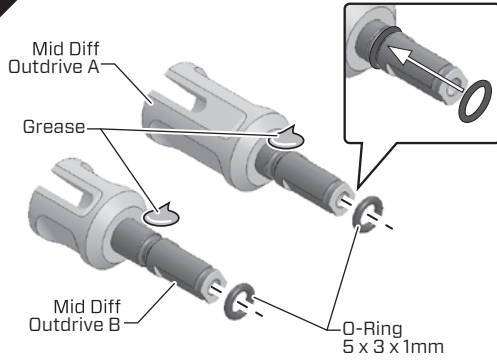


Diff Crown Gear 21T
MASM2218A
x 2pcs

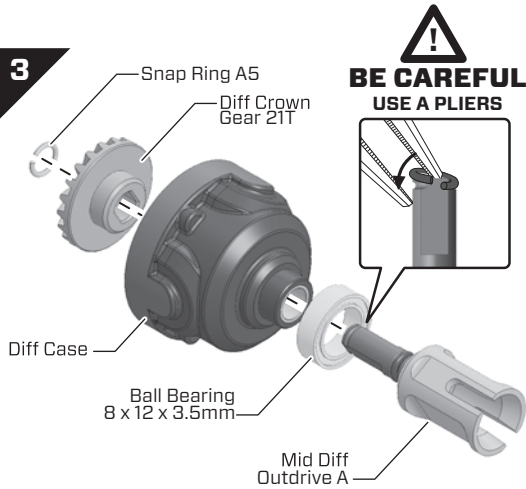


Diff Spider Gear 12T
MASM2219A
x 3pcs

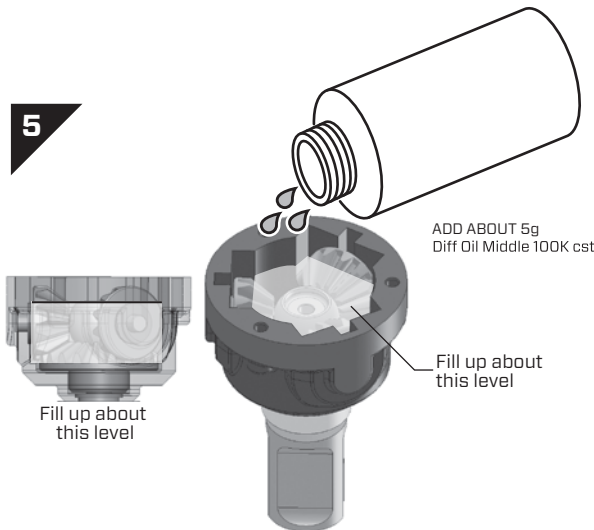
1



3



5

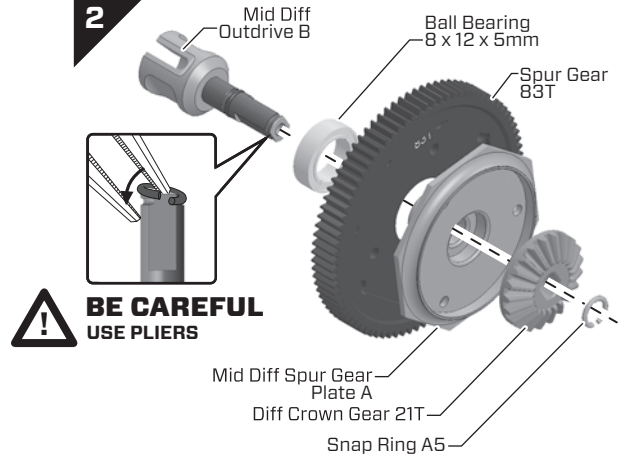


Fill up about this level

ADD ABOUT 5g
Diff Oil Middle 100K cst

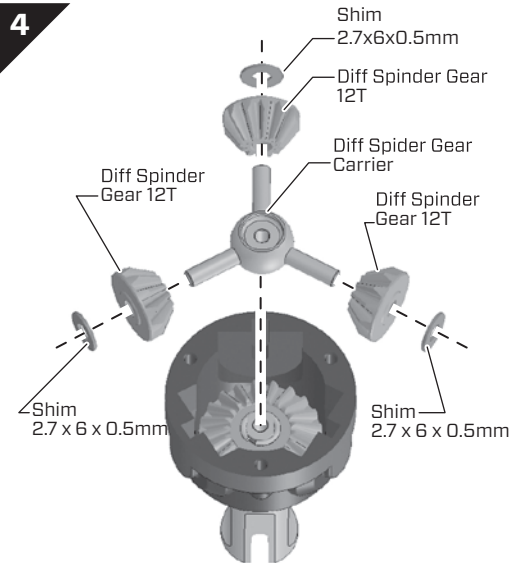
Fill up about this level

2



BE CAREFUL
USE PLIERS

4



FOR HIGH BITE TRACK



Mid Diff Outdrive A
TWSM00036
x 1pc



Diff Oil Middle
100K cst

FOR LOOSE TRACK



Mid Diff Outdrive B
TWSM00037
x 1pc



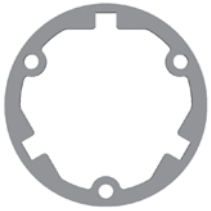
Diff Oil Middle
7K cst

B2 STEP 6

BAG B2 / BEUTEL B2
BORSA B2 / バッグ B2



Mid Diff Spur Gear Plate B
TWSM00039
x 1pc



Diff Gasket
SPC-G00009
x 2pcs



Diff Pin
2 x 17.8mm
TWSM00022
x 1pc

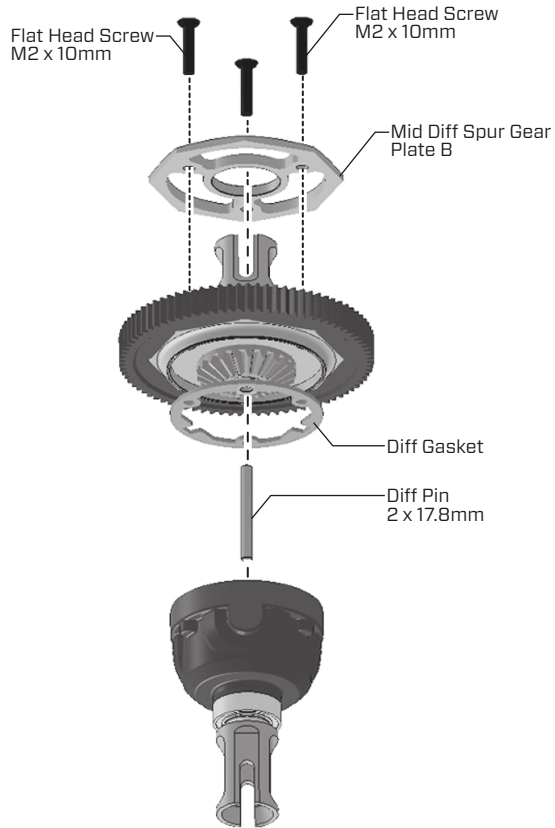


Flat Head Screw
M2 x 10mm
TWSSW00006
x 3pcs

Mid-Gear Diff Assembly

6

USE 0.05" HEX DRIVER



C STEP 1

BAG C / BEUTEL C
BORSA C / バッグ C



Shim
4.2 x 6.4 x 0.1mm
MASM2544A
x 2pcs



Input Bearing Crush Spacer
TWSM00018
x 1pc



Shim
10.1 x 12 x 0.1mm
MASM2543A
x 1pc



Ball Bearing
10 x 15 x 4mm
TWSM00090
x 2pcs



Mid Diff Shaft Bushing
TWSM00040
x 1pc



Flat Head Screw
M2x10mm
TWSSW00006
x 1pc



Pinion Support Ring
TWSM00049
x 1pc



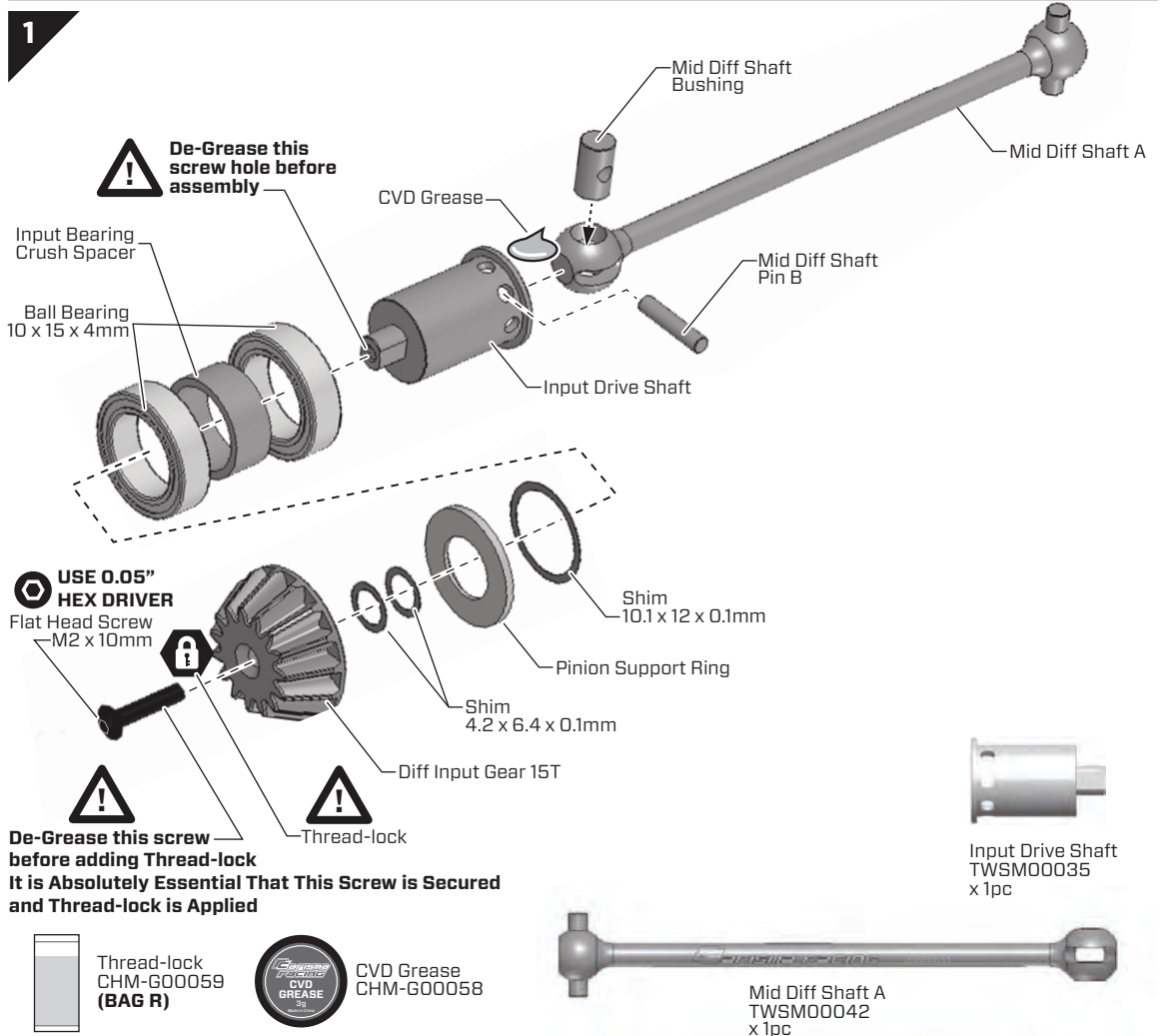
Mid Diff Shaft Pin B
TWSM00041
x 1pc



Diff Input Gear 15T
MASM2217A
x 1pc

Main Drive Shaft Assembly 1

1



C

STEP 2

BAG C / BEUTEL C
BORSA C / バッグ C

Shim
4.2 x 6.4 x 0.1mm
MASM2544A
x 2pcs

Input Bearing
Crush Spacer
TWSM00018
x 1pc

Shim
10.1 x 12 x 0.1mm
MASM2543A
x 1pc

Ball Bearing
10 x 15 x 4mm
TWSM00090
x 2pcs

Mid Diff Shaft
Bushing
TWSM00040
x 1pc

Flat Head Screw
M2x10mm
TWSSW00006
x 1pc

Pinion Support Ring
TWSM00049
x 1pc

Mid Diff Shaft
Pin B
TWSM00041
x 1pc

Diff Input Gear 15T
MASM2217A
x 1pc

Main Drive Shaft Assembly 2

2



De-Grease this screw hole before assembly



Thread-lock



USE 0.05" HEX DRIVER



De-Grease this screw before adding Thread-lock It is Absolutely Essential that This Screw is Secured and Thread-lock is Applied

Thread-lock
CHM-G00059
(BAG R)



CVD Grease
CHM-G00058



Input Drive Shaft
TWSM00035
x 1pc



Mid Diff Shaft B
TWSM00043
x 1pc

D

STEP 1 - 2

BAG D / BEUTEL D
BORSA D / バッグ D

A-Arm Plate
Front Left
TWCBF00001
x 1pc

A-Arm Plate
Front Right
TWCBF00002
x 1pc

A-Arm Plate
Rear Left
TWCBF00003
x 1pc

A-Arm Plate
Rear Right
TWCBF00004
x 1pc

A-Arm Front
Left
GTB4P0101
x 1pc

A-Arm Front
Right
GTB4P0102
x 1pc

A-Arm Rear
Left
GTB4P0103
x 1pc

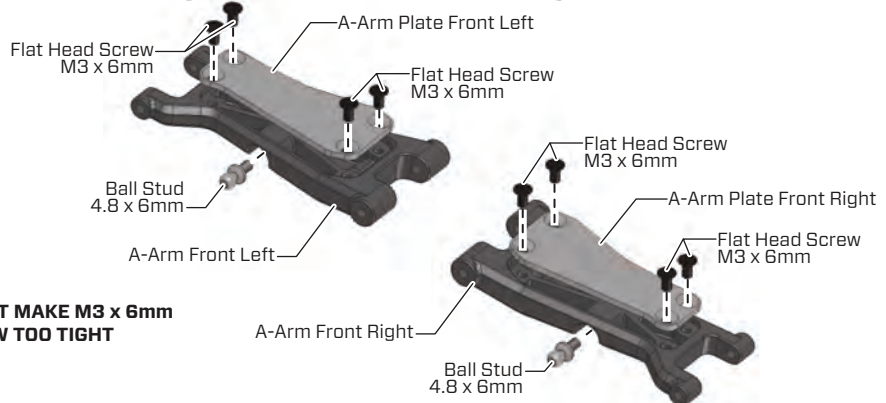
A-Arm Rear
Right
x 1pc

Flat Head Screw
M3 x 6mm
TWSSW00009
x 16pcs

Ball Stud
4.8 x 6mm
TWSM00002
x 4pcs

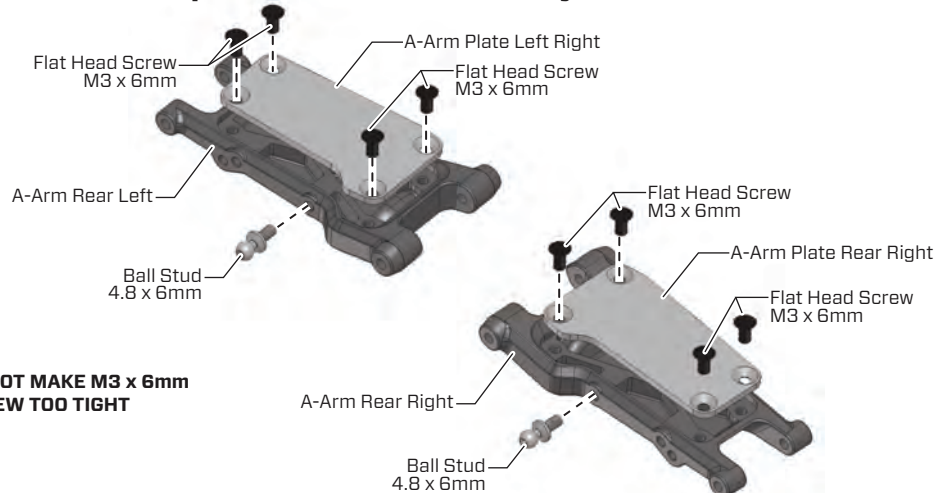
Front And Rear Lower Suspension Arms Assembly

1 Front Lower Suspension Arms Assembly



DO NOT MAKE M3 x 6mm SCREW TOO TIGHT

2 Rear Lower Suspension Arms Assembly

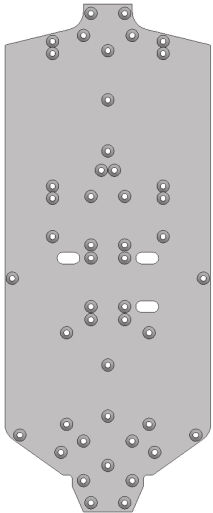


DO NOT MAKE M3 x 6mm SCREW TOO TIGHT

E STEP 1 - 3

Chassis Plate Assembly

BAG E / BEUTEL E
BORSA E / バッグ E



Chassis Plate
TWCBF00005
x 1pc



Gear Box Lower
GTB40202
x 1pc



Bumper
GTB4P0601
x 1pc



Suspension Mount
FF
TWSM00081
x 1pc



Suspension Mount
FR
TWSM00082
x 1pc



Suspension Insert
FF12, RR1.5 Degree
GTB4P0902
x 2pcs



Gear Box Insert
TWSM00030
x 1pc



Suspension Insert
FR
GTB4P0903
x 2pcs



Shim
3.1 x 6 x 1mm
TWSM00059
x 2pcs

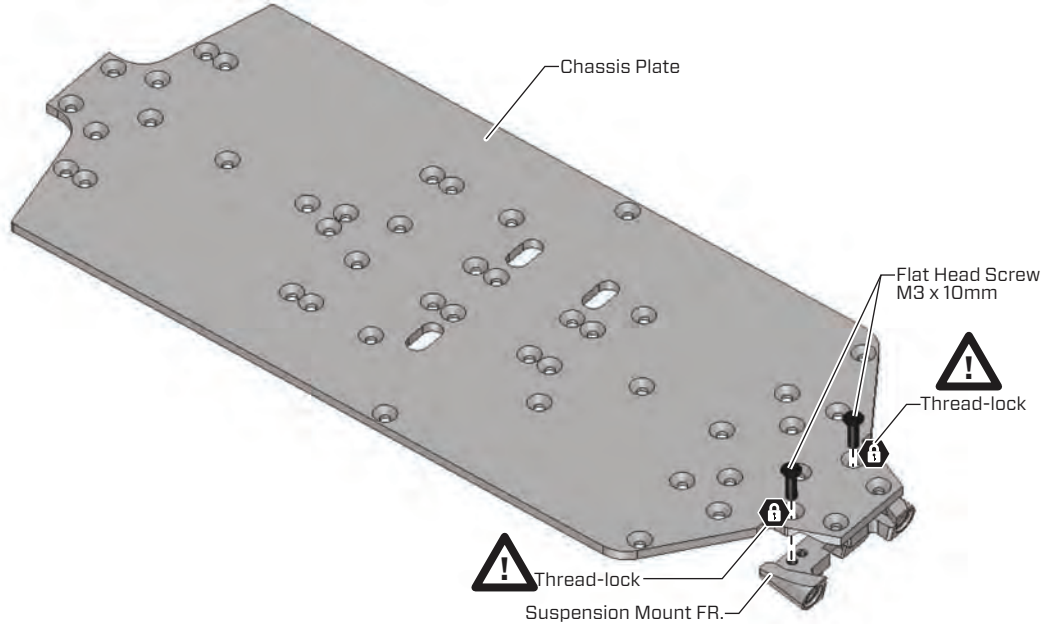


Flat Head Screw
M3 x 10mm
TWSSW00007
x 7pcs

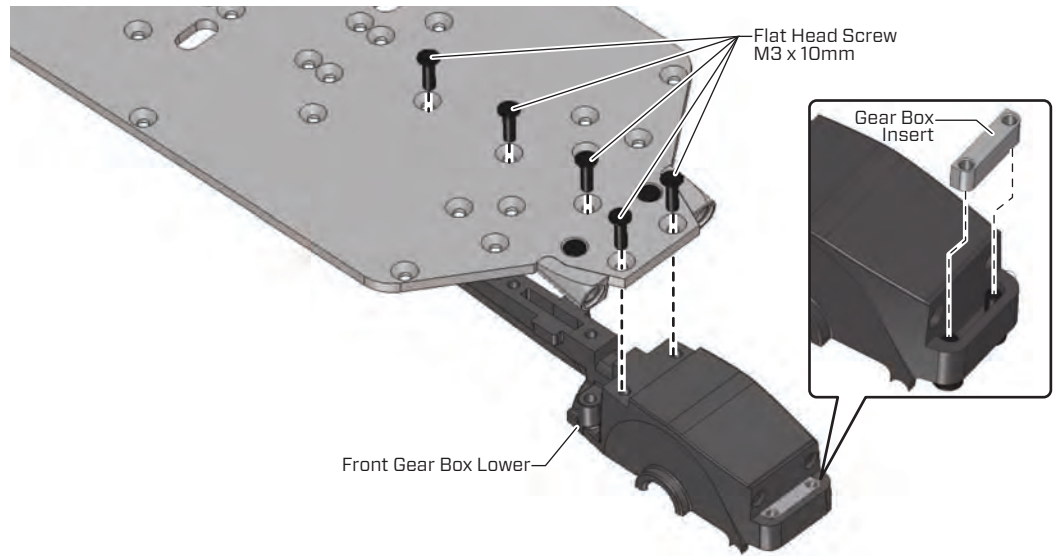


Button Head Screw
M3 x 12mm
TWSSW00002
x 2pcs

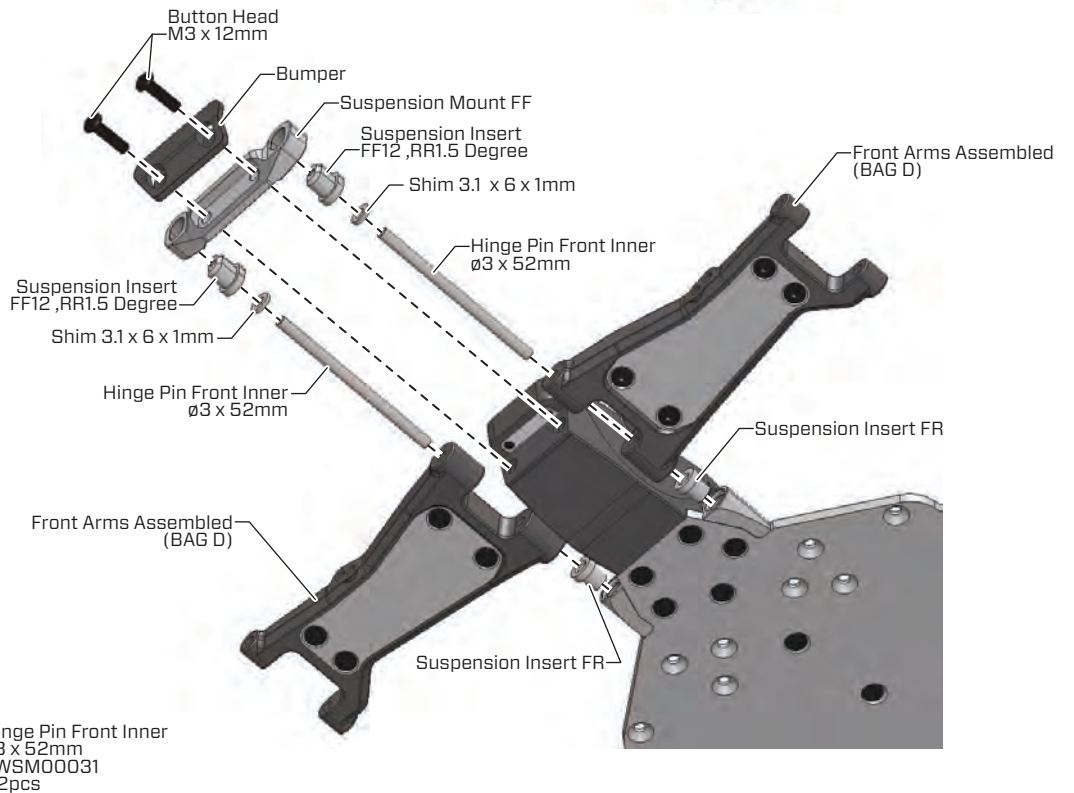
1



2



3



E

STEP 4 - 6

Chassis Plate Assembly

BAG E / BEUTEL E
BORSA E / バッグ E

4



Gear Box Rear Lower
GTB4P0204
x 1pc



Suspension Mount RF
TWSM00083
x 1pc



Suspension Mount RR
TWSM00084
x 1pc



Suspension Insert RF 3 Degree
GTB4P0905
x 2pcs



Suspension Insert FF10-14,RR0-3 Degree
GTB4P0901
x 2pcs



Gear Box Insert
TWSM00030
x 1pc



Shim
3.1 x 6 x 1mm
TWSM00059
x 14pcs



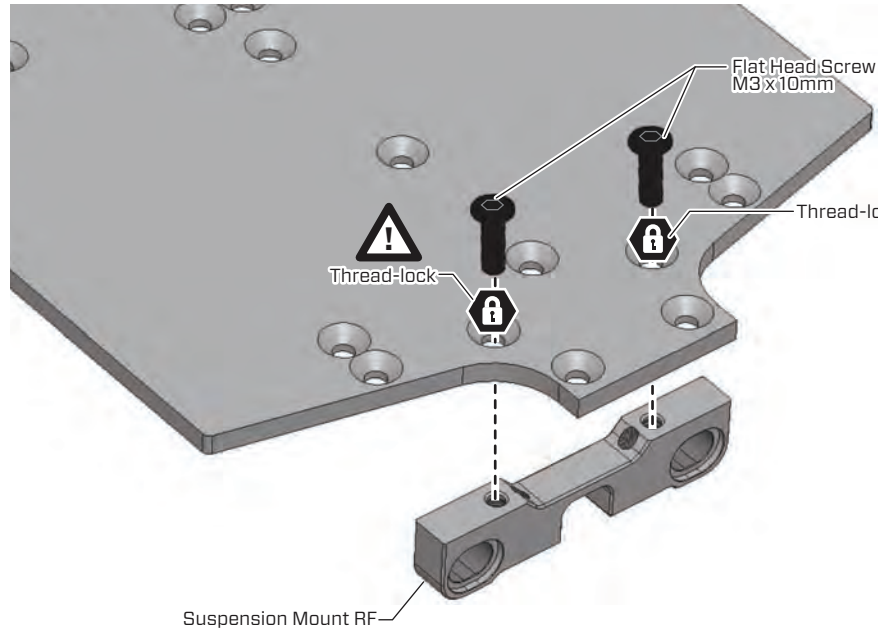
Flat Head Screw
M3 x 10mm
TWSSW00007
x 7pcs



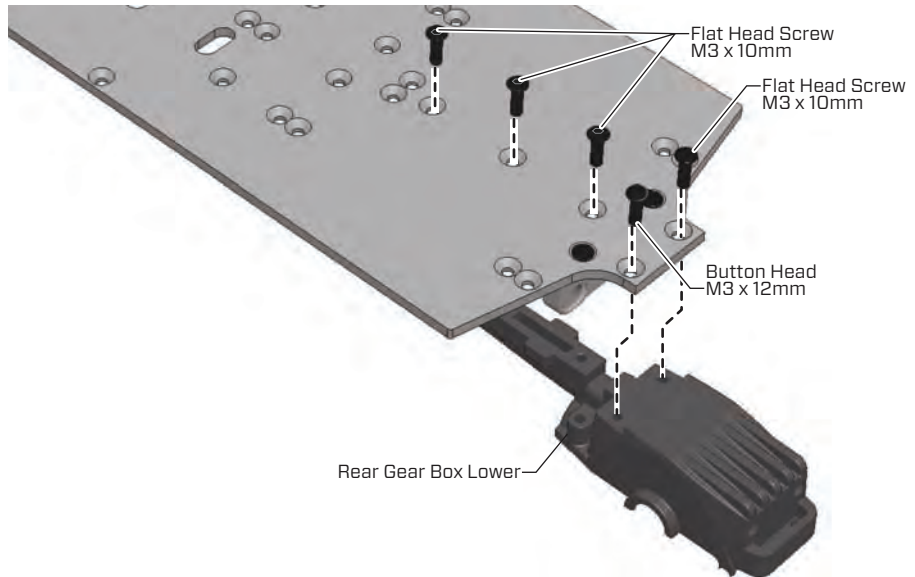
Button Head Screw
M3 x 12mm
TWSSW00002
x 2pcs



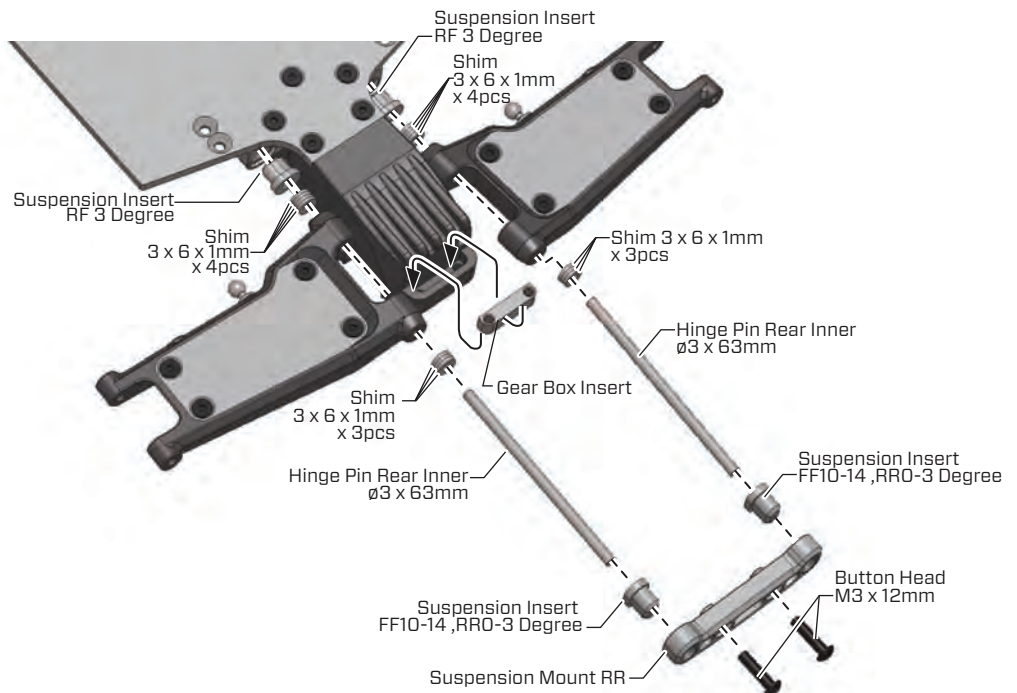
Thread-lock
CHM-G00059
(BAG R)



5



6



Hinge Pin Rear Inner
ø3 x 63mm
TWSM00033
x 2pcs

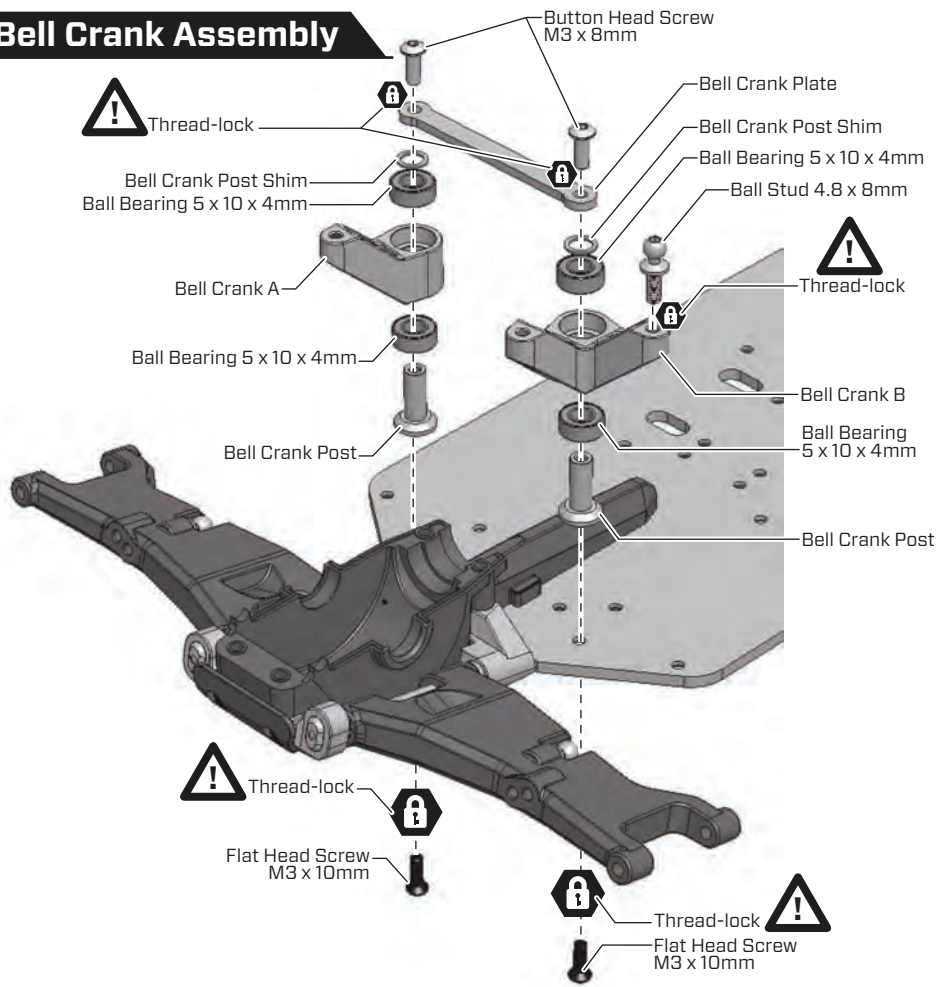
F STEP 1 - 2

BAG F / BEUTEL F
BORSA F / バッグ F

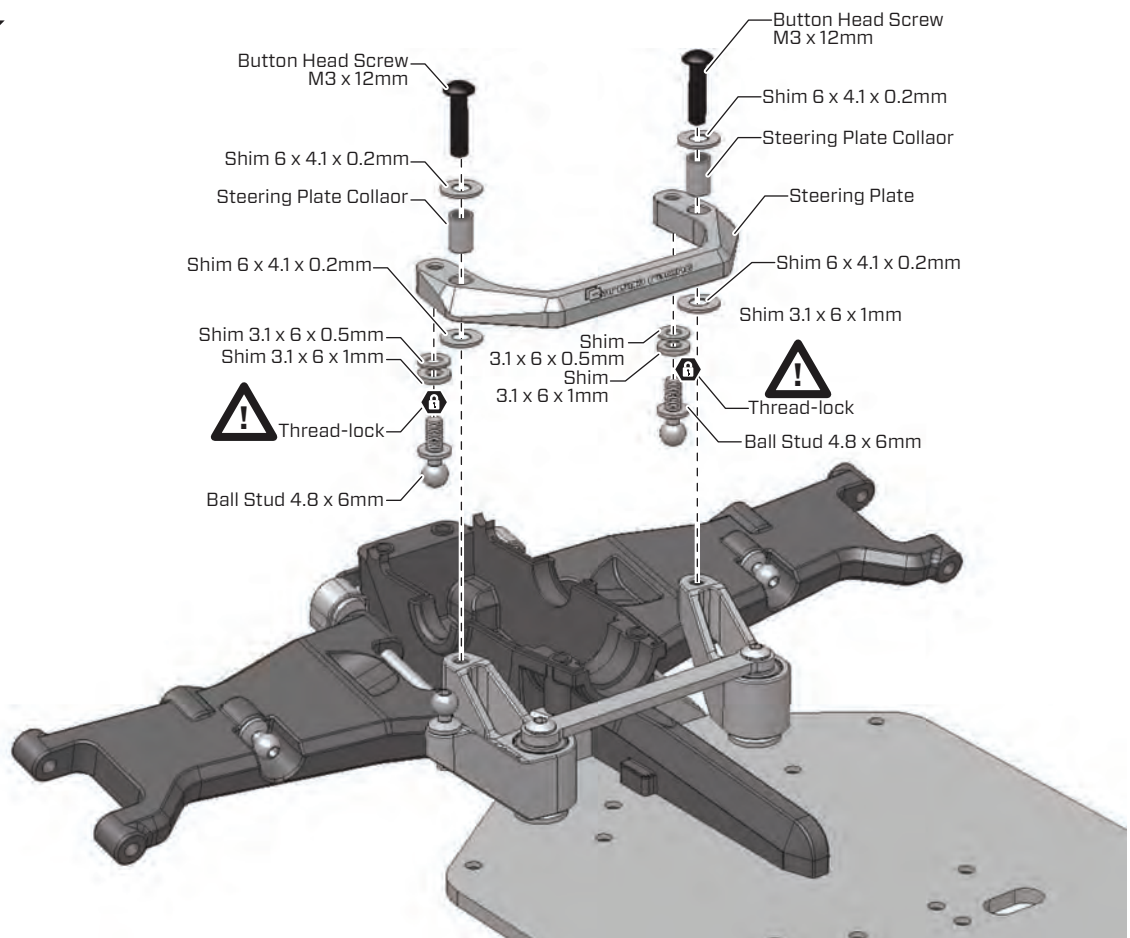
-  Button Head Screw
M3 x 8 mm
TWSSW00005
x 2pcs
-  Flat Head Screw
M3 x 10mm
TWSSW00007
x 2pcs
-  Button Head Screw
M3 x 12 mm
TWSSW00002
x 2pcs
-  Ball Stud
4.8 x 6mm
TWSM00002
x 2pcs
-  Ball Stud
4.8 x 8mm
TWSM00003
x 1pc
-  Bell Crank Post
Shim
TWSM00009
x 2pcs
-  Ball Bearing
5 x 10 x 4mm
TWSM00091
x 4pcs
-  Shim
3.1 x 6 x 0.5mm
TWSM00058
x 2pcs
-  Shim
3.1 x 6 x 1mm
TWSM00059
x 2pcs
-  Shim
6 x 4.1 x 0.2mm
MASM2564A
x 4pcs
-  Steering Plate
Collaor
MASM2563A
x 2pcs
-  Bell Crank Post
TWSM00010
x 2pcs
-  Bell Crank A
TWSM00011
x 1pc
-  Bell Crank B
TWSM00012
x 1pc
-  Bell Crank Plate
TWCBF00009
x 1pc
-  Steering Plate
TWSM00080
x 1pc
-  Thread-lock
CHM-G00059
(BAG R)

Steering Bell Crank Assembly

1



2

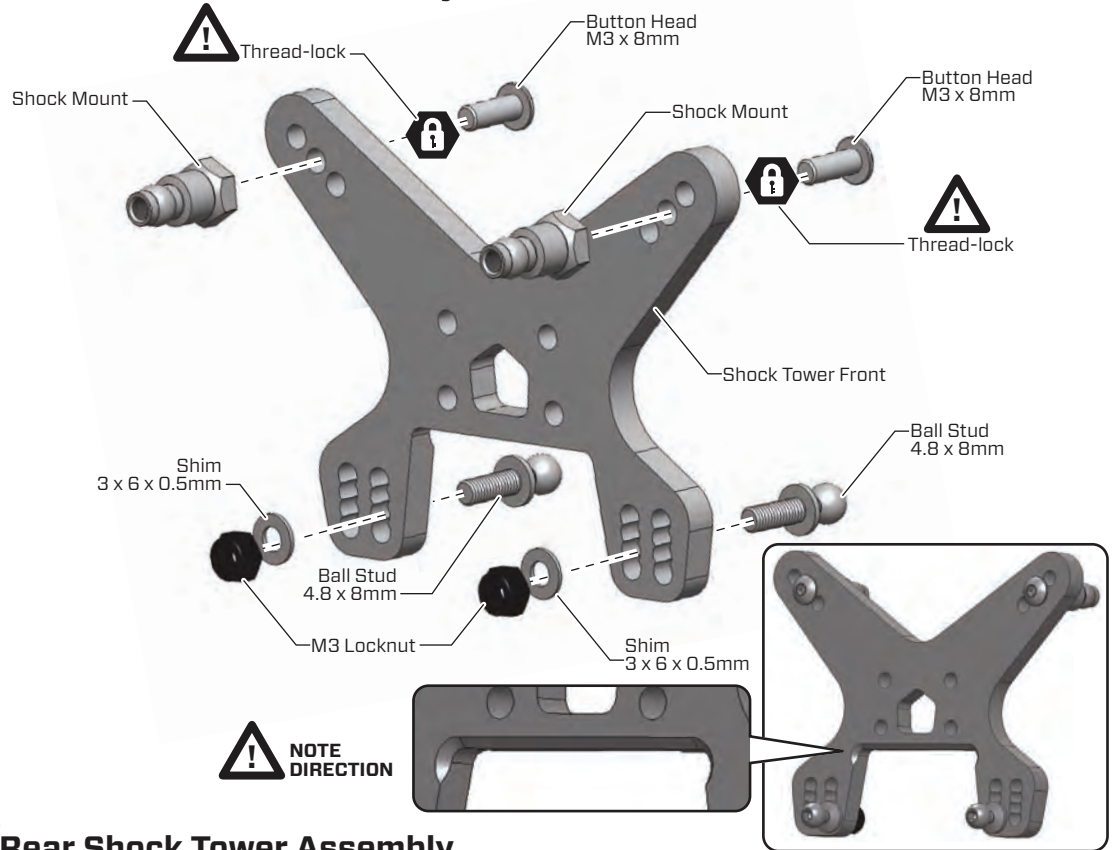


G STEP 1 - 2

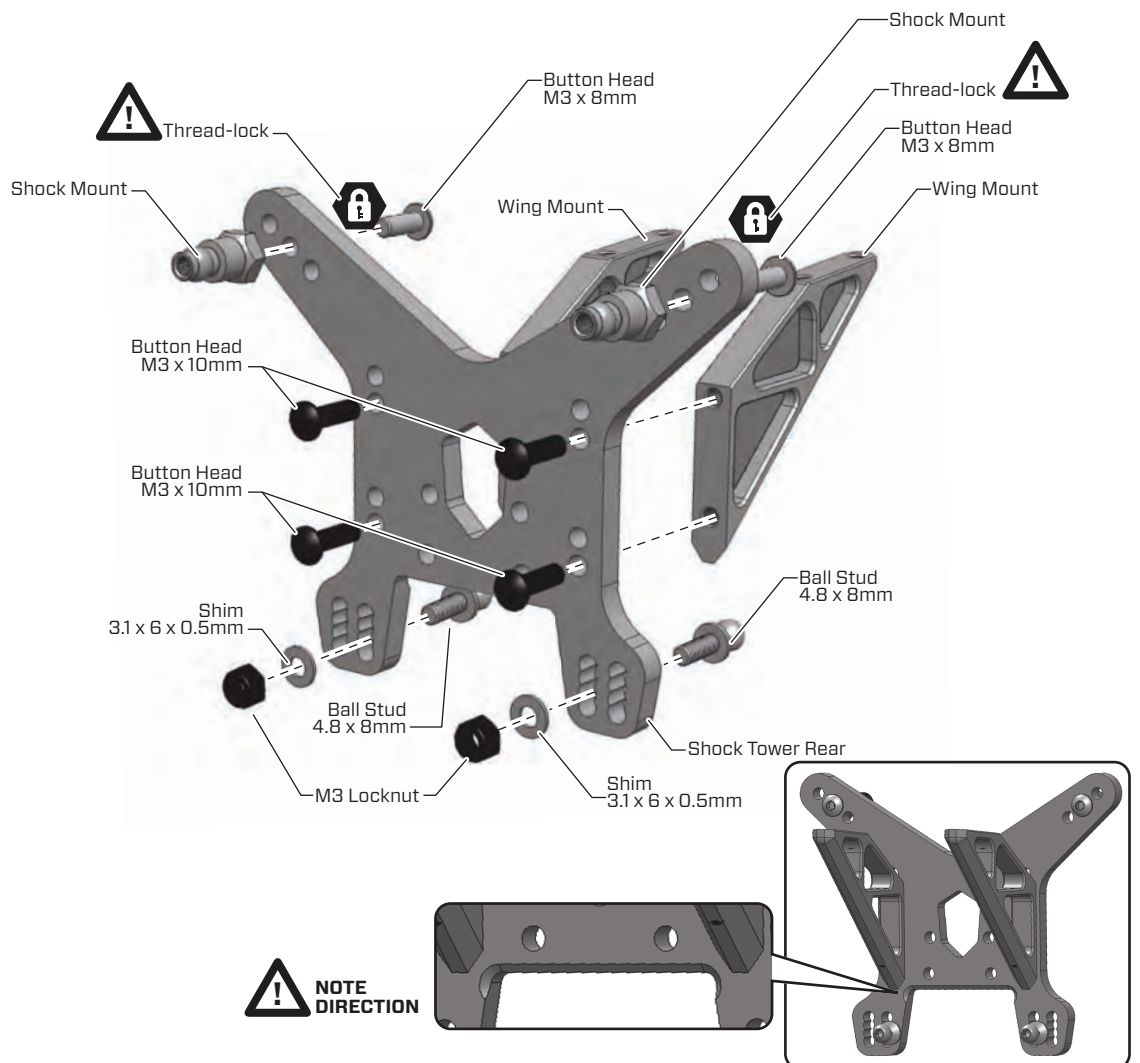
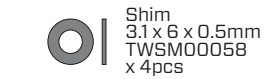
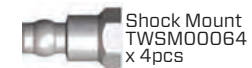
BAG G / BEUTEL G
BORSA G / バッグ G

Front And Rear Shock Towers Assembly

1 Front Shock Tower Assembly



2 Rear Shock Tower Assembly



STEP 1-3

Front & Rear Sway Bar Assembly

BAG H / BEUTEL H
BORSA H / バッグ H

Set Screw
M3 x 3mm
TWSSW00013
x 8pcs

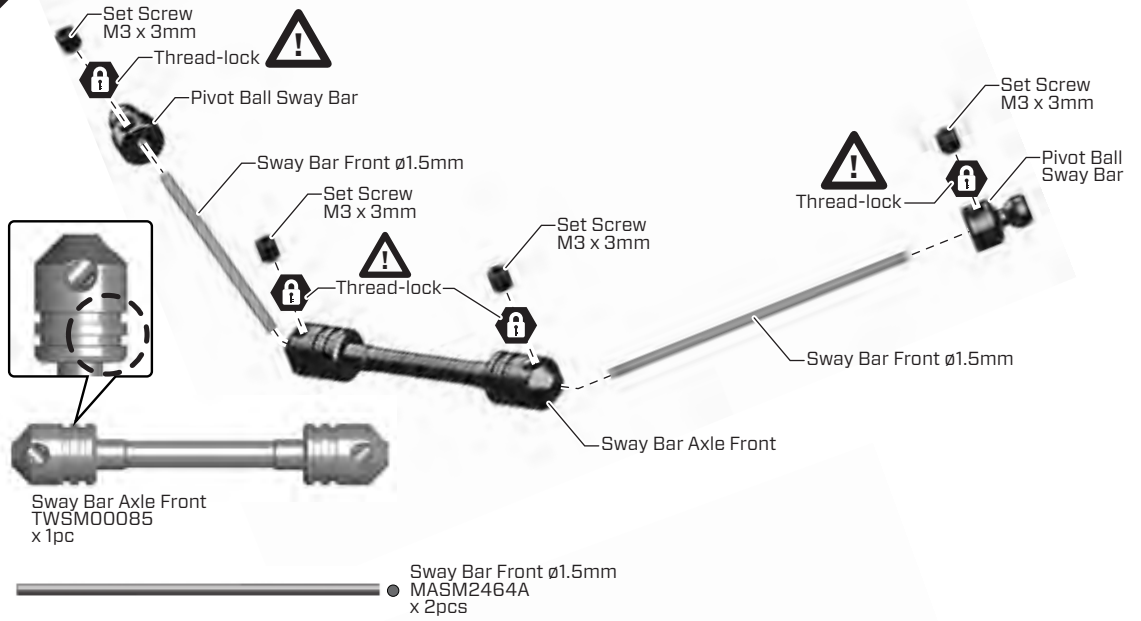
Pivot Ball Sway Bar
TWSM00051
x 4pcs

Ball End Sway Bar
GTB4P0503
x 8pcs

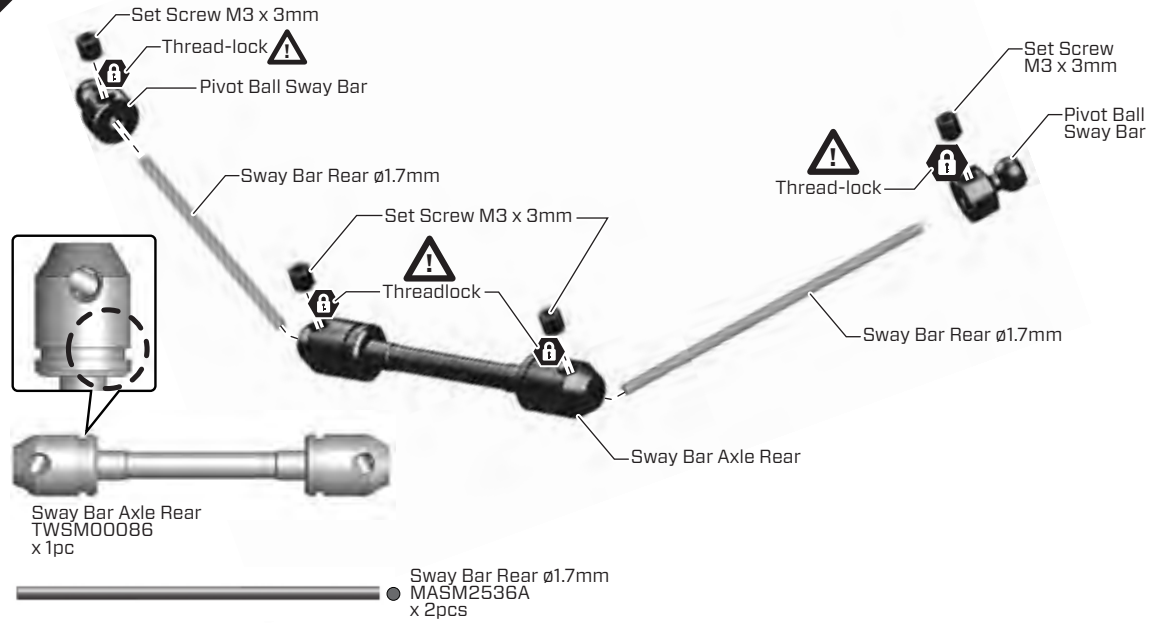
Set Screw
M3 x 8mm
TWSSW00014
x 4pcs

Thread-lock
CHM-G00059
(BAG R)

1 Front Sway Bar Assembly

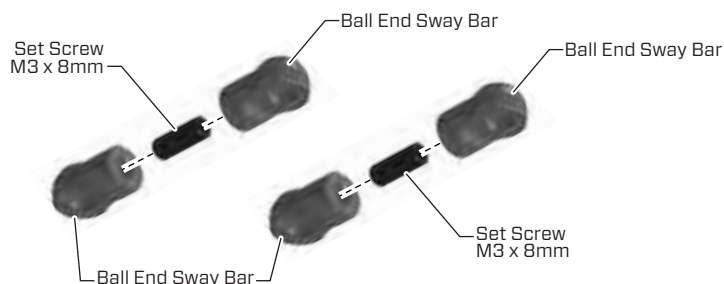


2 Rear Sway Bar Assembly



3 Ball End Sway Bar Assembly

MAKE FOUR(4) Ball End Sway Bars



STEP 1 - 2

BAG I1 / BEUTEL I1
BORSA I1 / バッグ I1

Saddle Pack Layout Assembly

• If You Choose SHORTY PACK layout, Please Go To Page 17

1

Battery Plate
Thumb Nut
TWSM00006
x 4pcs

Battery Post
TWSM00007
x 4pcs

Set Screw
M3 x 20 mm
TWSSW00012
x 4pcs

Battery Holder
Saddle Pack
GTB4P0701
x 2pcs

Flat Head Screw
M3 x 16 mm
TWSSW00008
x 4pcs

Flat Head Screw
M3 x 6mm
TWSSW00009
x 2pcs

Battery Stopper
GTBP0306
x 1pc

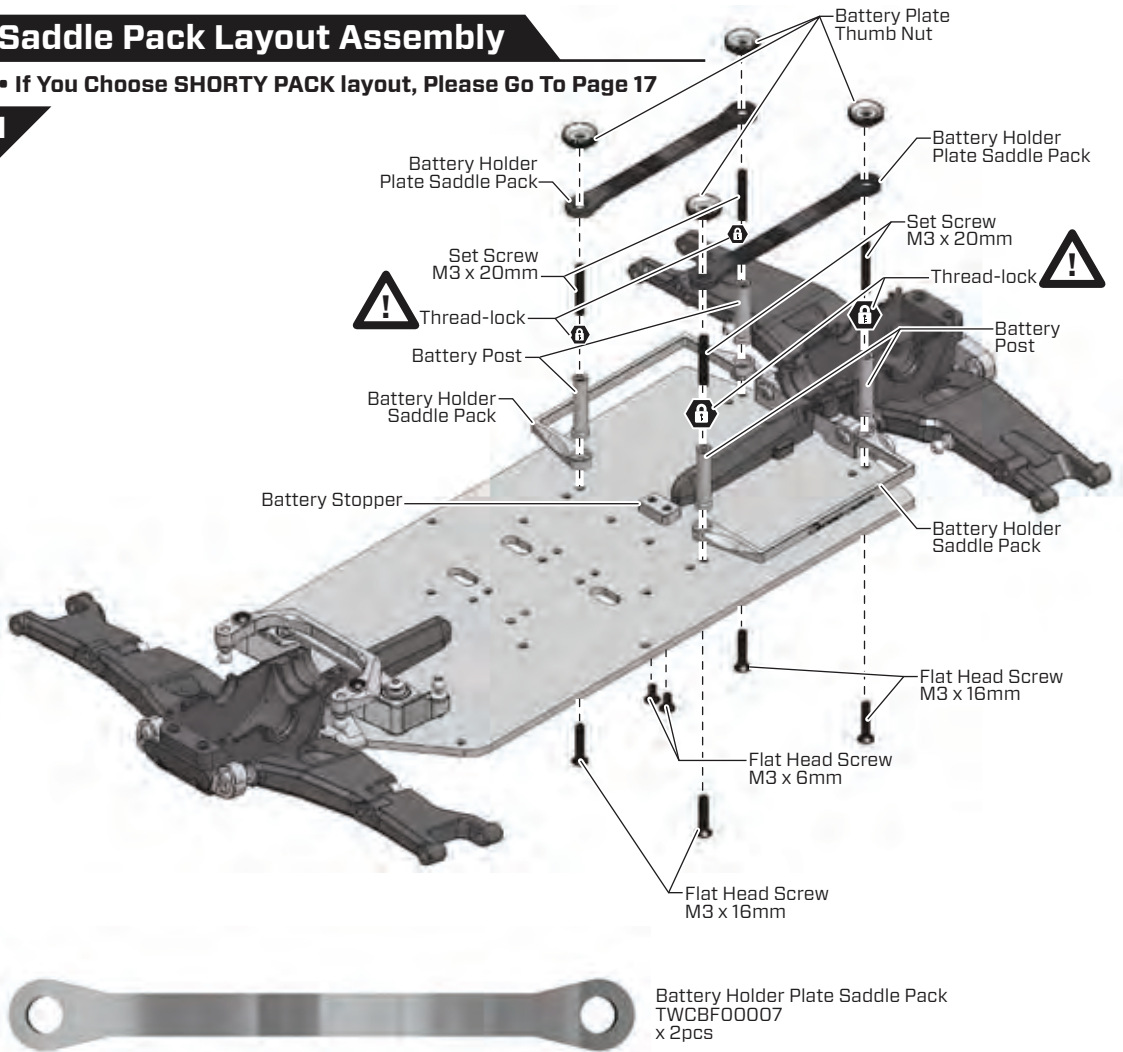
Center Mount
TWSM00028
x 1pc

Center Mount
TWSM00029
x 1pc

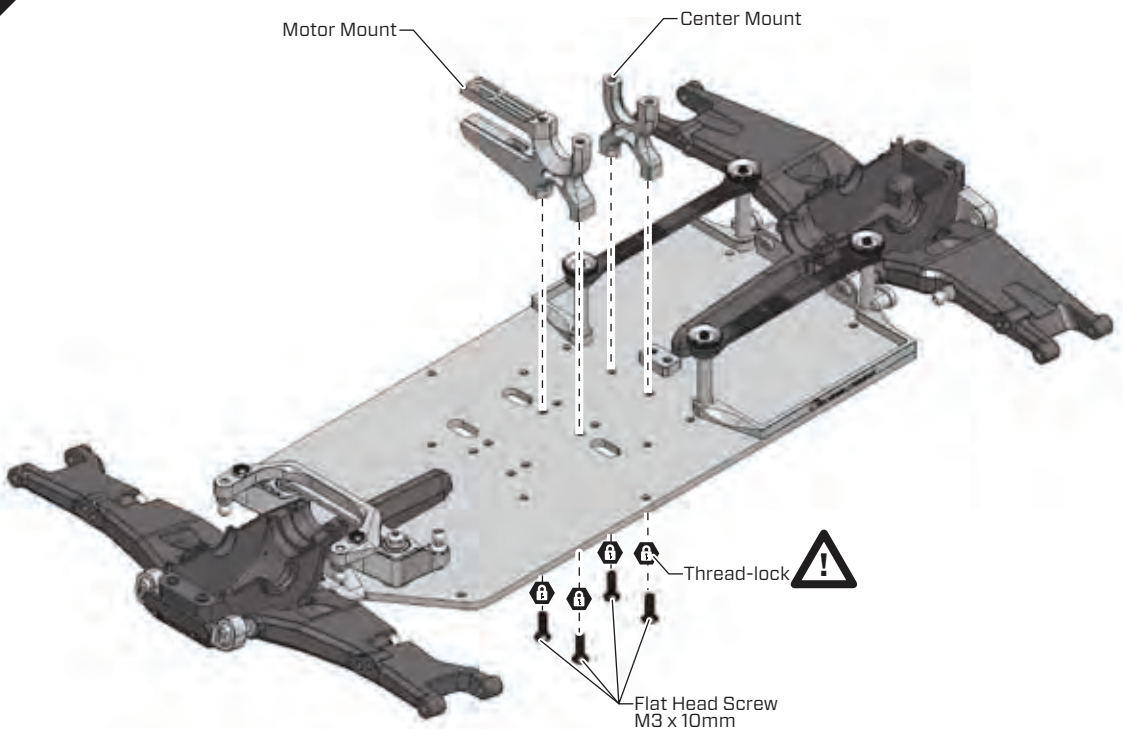
Flat Head Screw
M3 x 10 mm
TWSSW00007
x 4pcs

Thread-lock
CHM-G00059
(BAG R)

1



2



1

STEP 3 - 4

BAG I1 / BEUTEL I1
BORSA I1 / バッグ I1



Gear Box Front Upper
GTB4P0201
x 1pc



Gear Box Upper
GTB4P0203
x 1pc



Steel Tube
4 x 3 x 20.4mm
MASM2555A
x 4pcs



Button Head Screw
M3 x 10mm
TWSSW00001
x 4pcs



Top Deck
TWCBF00006
x 1pc



Button Head Screw
M3 x 30mm
TWSSW00004
x 4pcs



Flat Head Screw
M3 x 6mm
TWSSW00009
x 2pcs



Button Head Screw
M3 x 10mm
TWSSW00001
x 4pcs



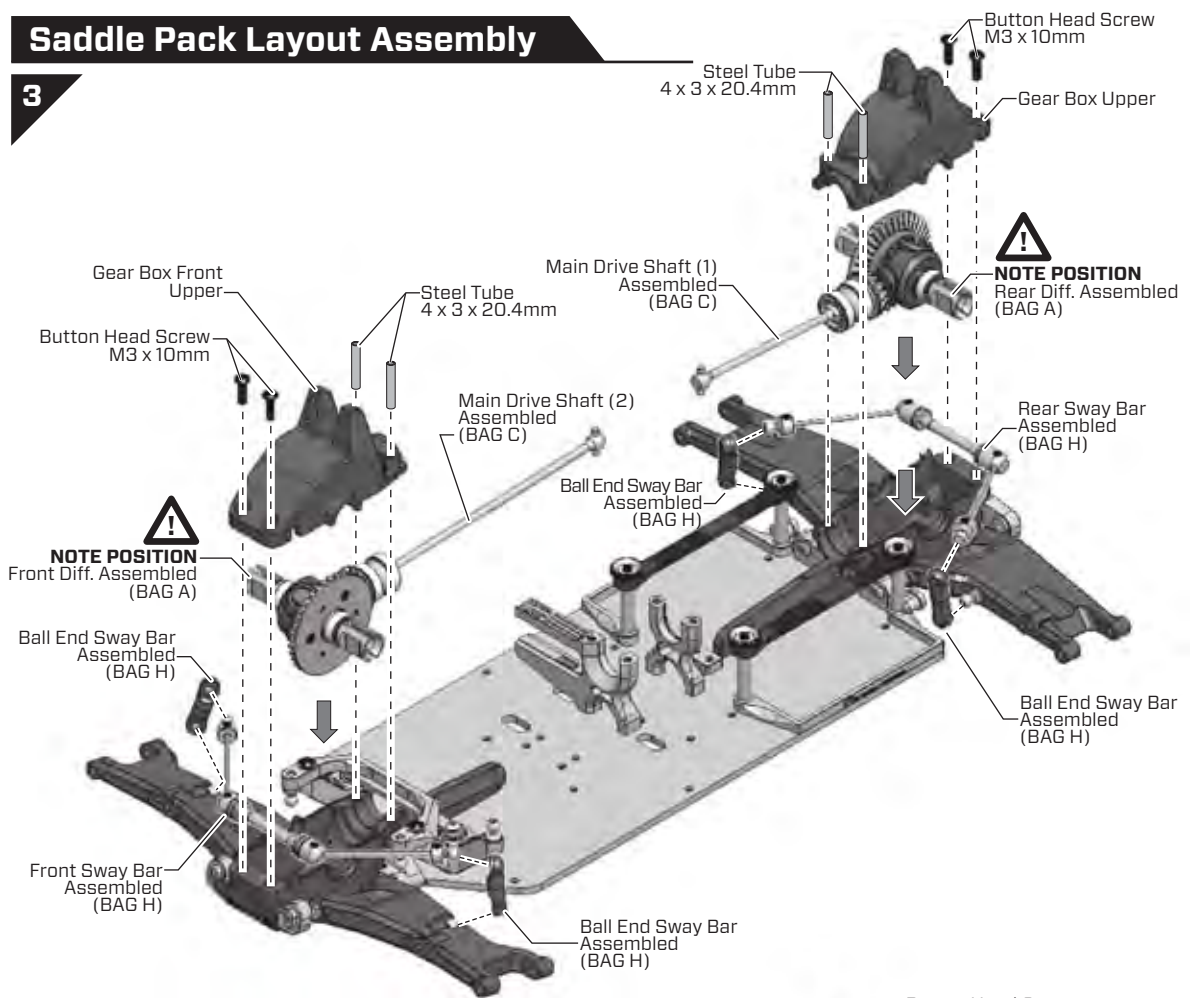
Body Mount
GTB4P0604
x 2pcs



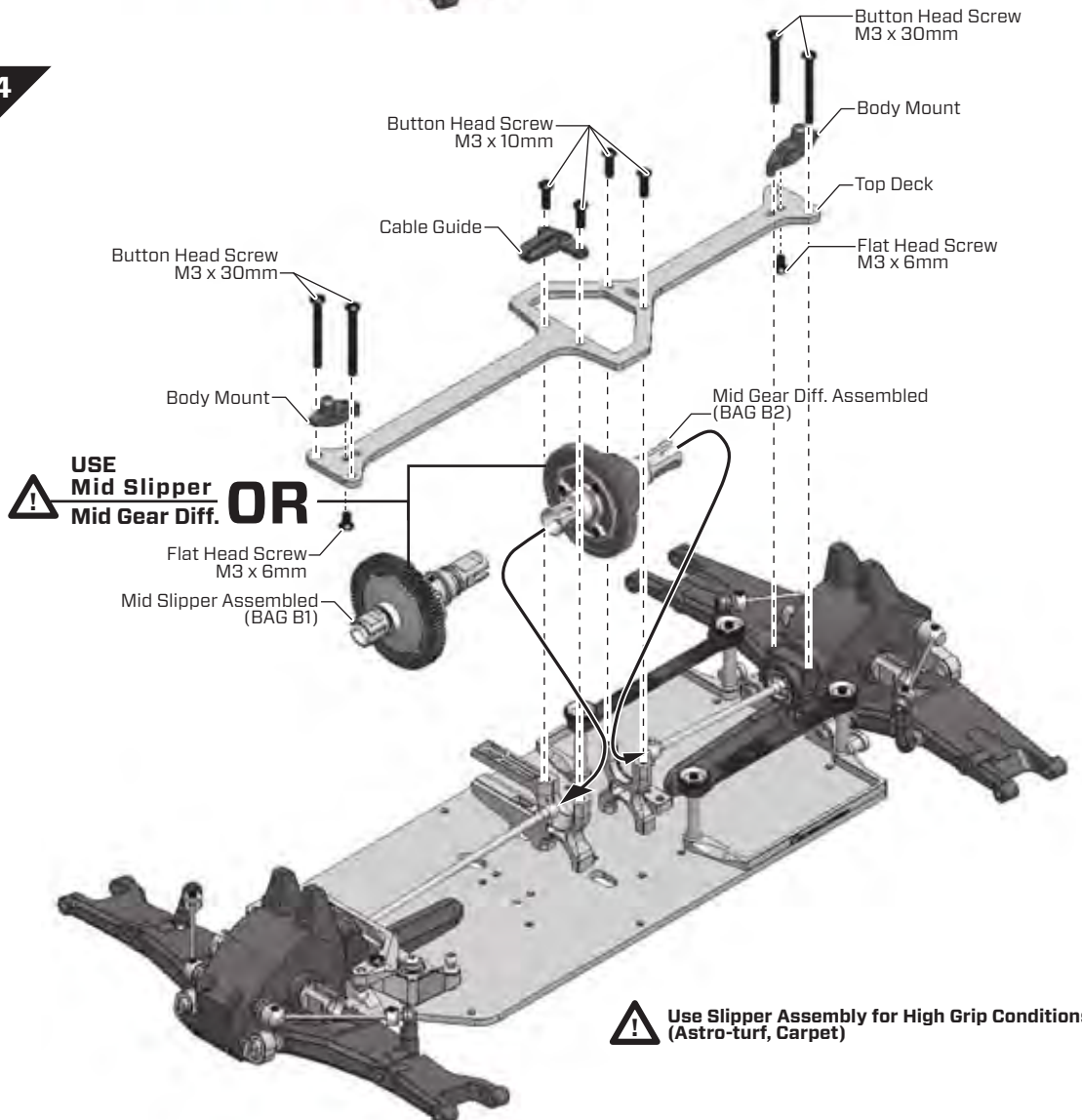
Cable Guide
GTB4P0602
x 1pc

3

Saddle Pack Layout Assembly



4



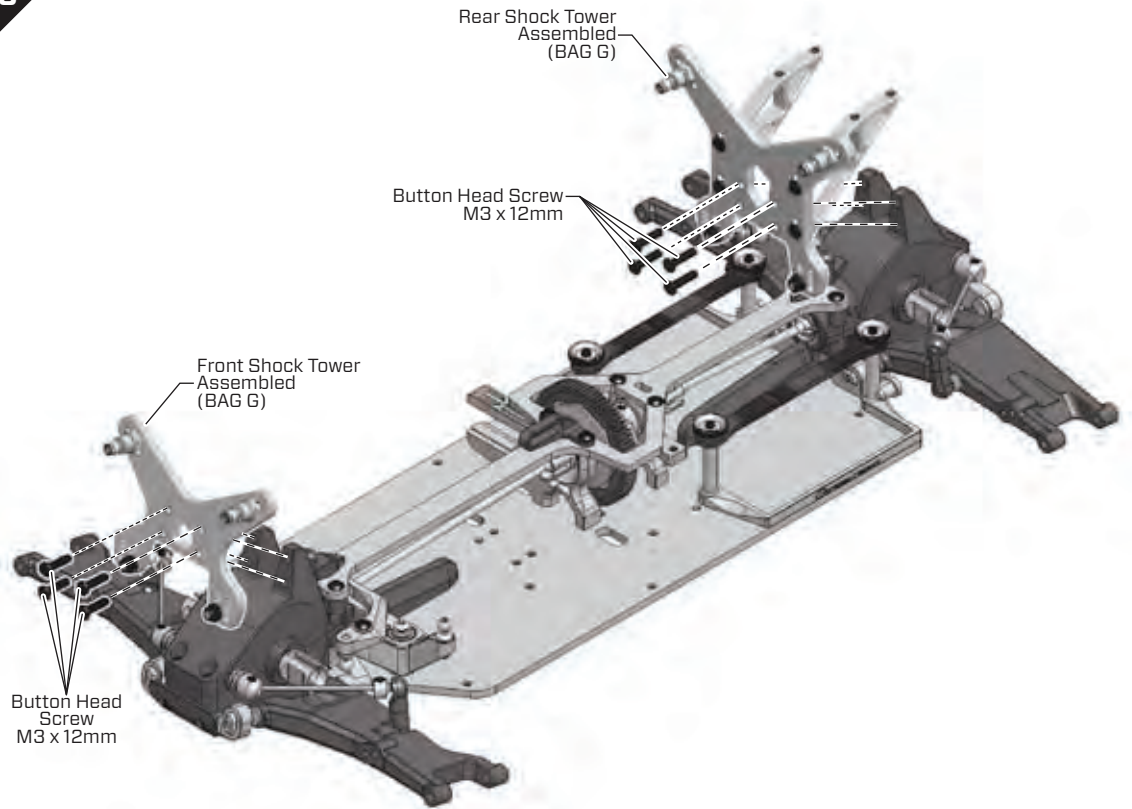
STEP 5 - 6

Saddle Pack Layout Assembly

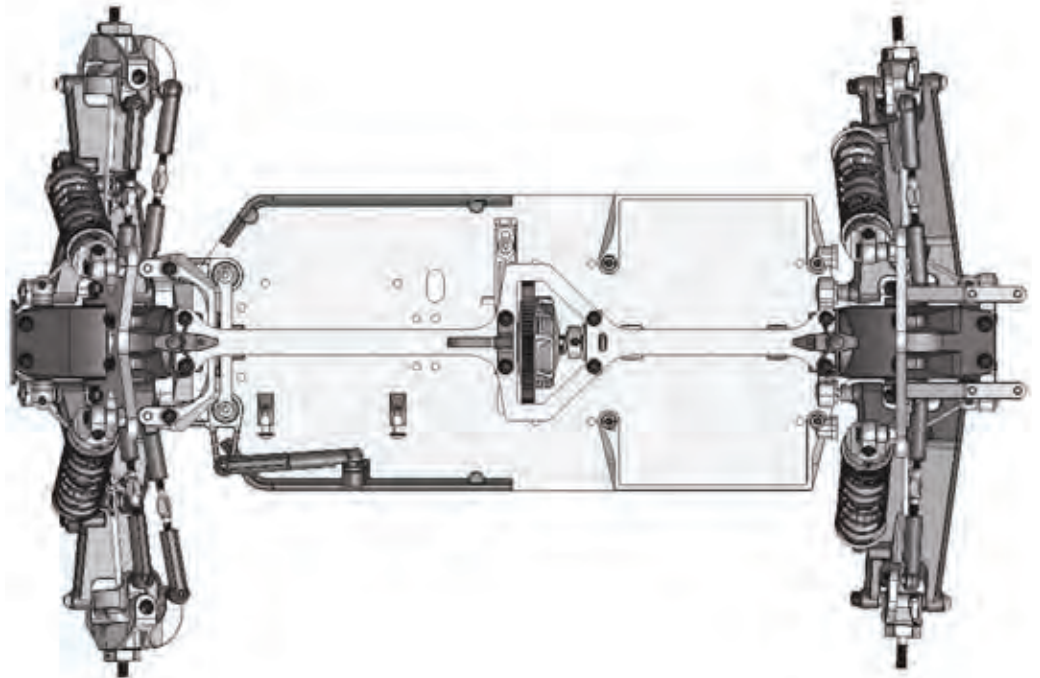
BAG I1 / BEUTEL I1
BORSA I1 / バッグ I1

5

Button Head Screw
M3x12mm
TWSSW00002
x 8pcs



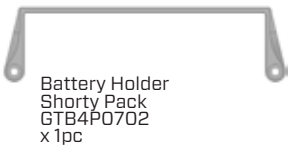
6 Saddle Pack Layout



2

STEP 1 - 2

BAG 12 / BEUTEL 12
BORSA 12 / バッグ 12



FROM BAG 11

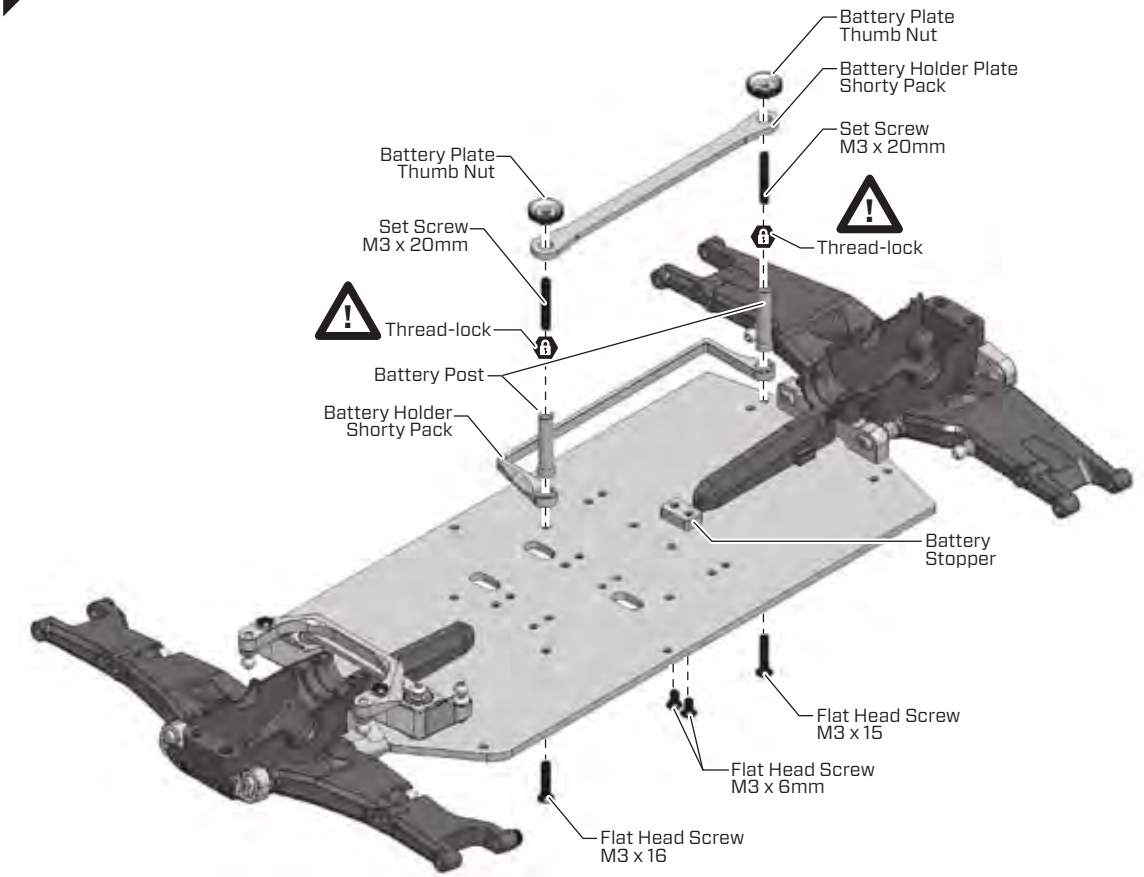


FROM BAG 11



Shorty Pack Layout Assembly

1

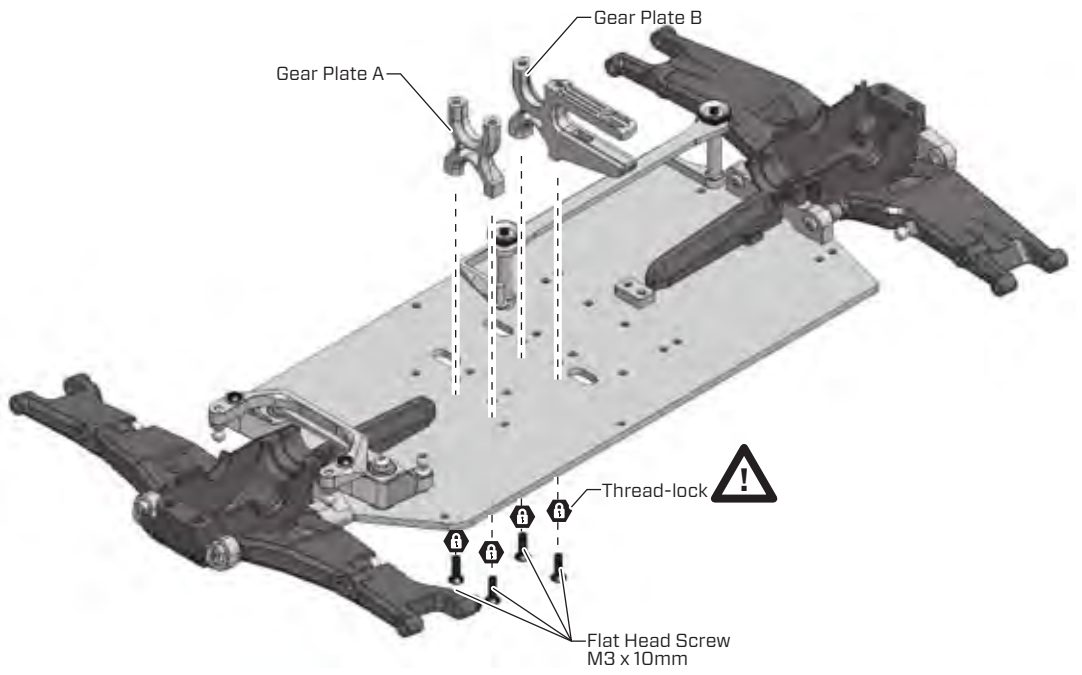


FROM BAG 11

Battery Holder Plate Shorty Pack
TWCBF00008
x 1pc



2



2 STEP 3 - 4

BAG 12 / BEUTEL 12
BORSA 12 / バッグ 12

FROM BAG 11



Gear Box Front Upper
GTBP0201
x 1pc



Gear Box Upper
GTBP0203
x 1pc



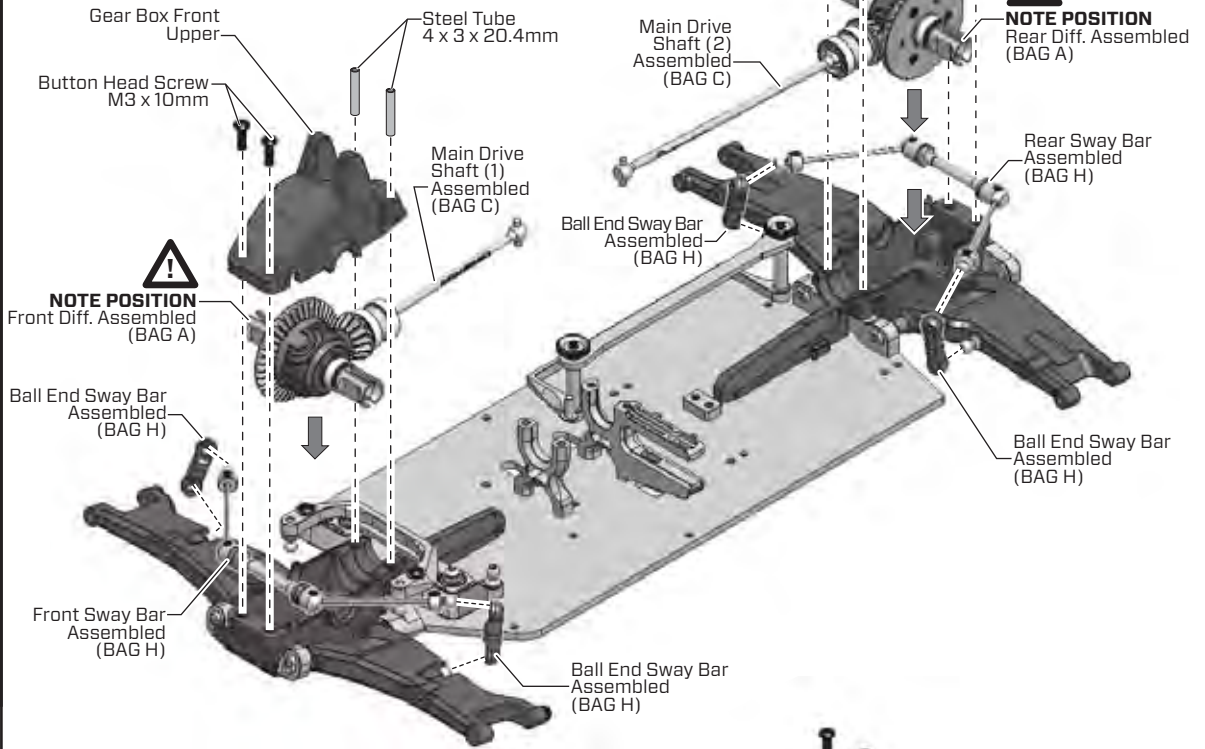
Steel Tube
4 x 3 x 20.4mm
MASM2555A
x 4pcs



Button Head Screw
M3 x 10mm
TWSSW00001
x 4pcs

3 Shorty Pack Layout Assembly

3



FROM BAG 11



Top Deck
TWCBF00006
x 1pc



Button Head Screw
M3 x 30mm
TWSSW00004
x 4pcs



Flat Head Screw
M3 x 6mm
TWSSW00009
x 2pcs



Button Head Screw
M3 x 10mm
TWSSW00001
x 4pcs

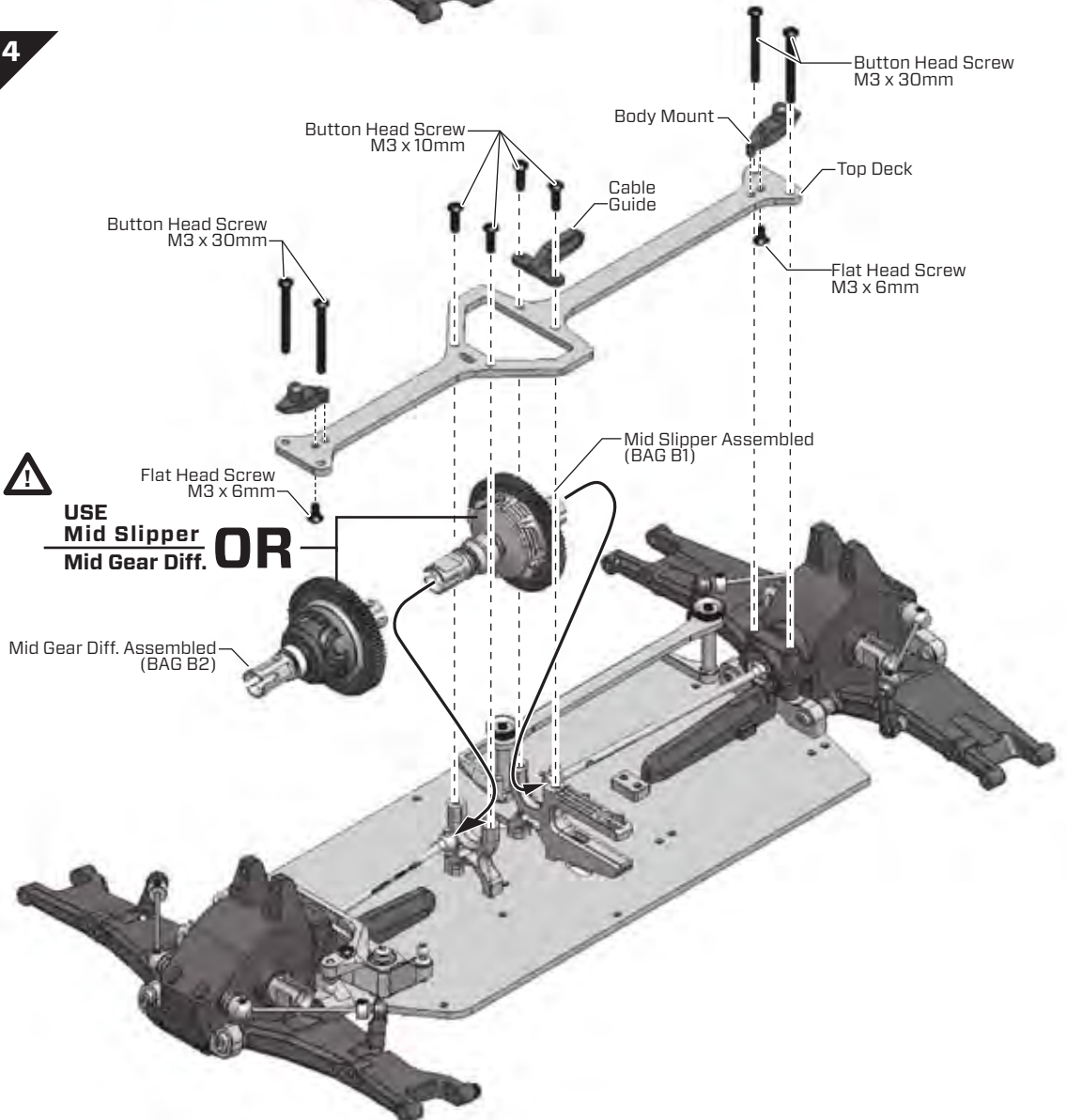


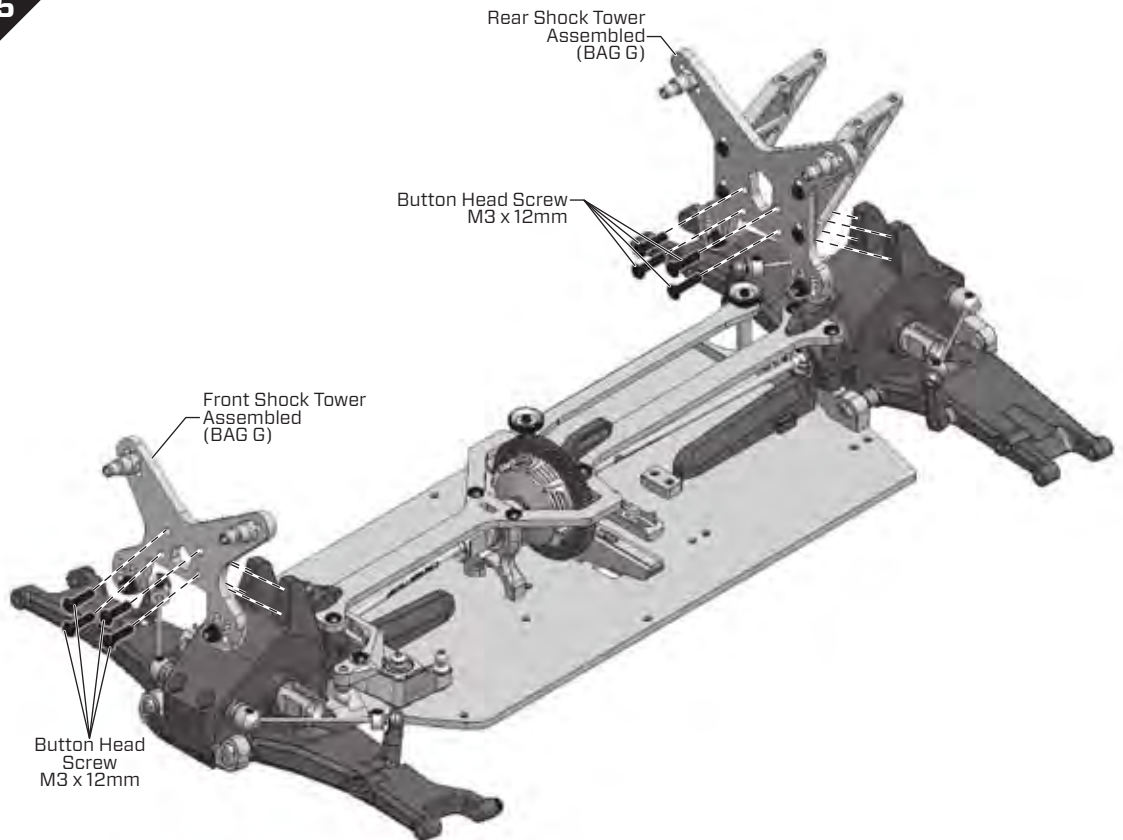
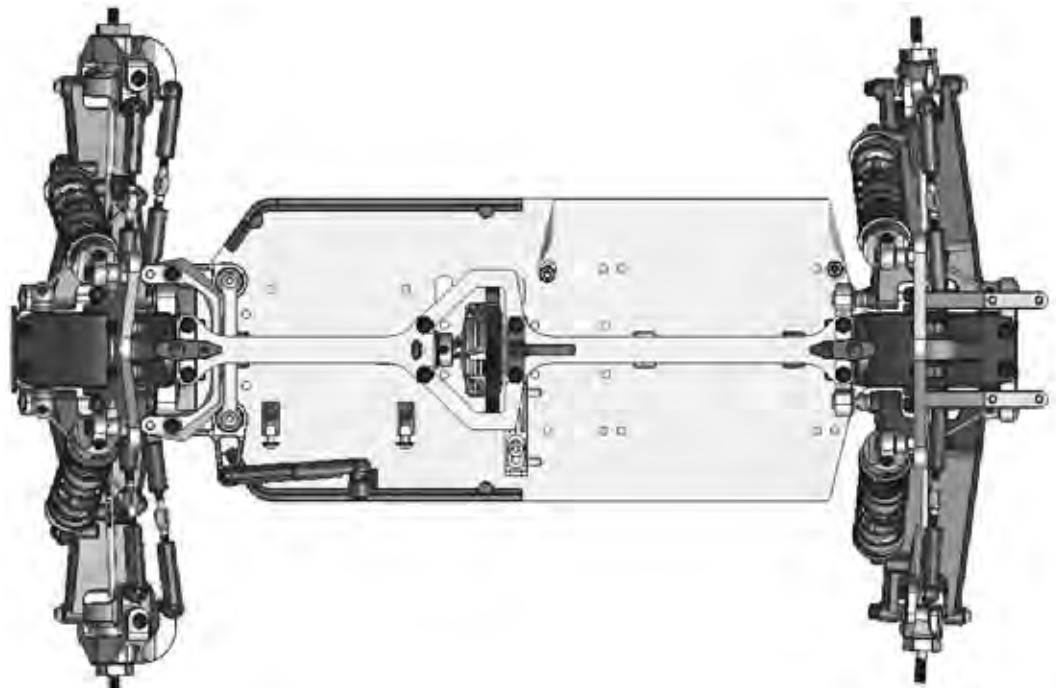
Body Mount
GTB4P0604
x 2pcs



Cable Guide
GTB4P0602
x 1pc

4



2**STEP 5 - 6**BAG 12 / BEUTEL 12
BORSA 12 / バッグ 12**FROM BAG 11**Button Head Screw
M3x12mm
TWSSW00002
x 8pcs**5****Shorty Pack Layout Assembly****6****Shorty Pack Layout**

STEP 1 - 3

BAG J / BEUTEL J
BORSA J / バッグ J



Ball End
GTB4P0501
x 14pcs



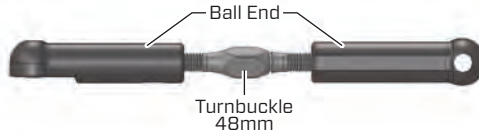
Set Screw
M3 x 16mm
TWSSW00011
x 1pc



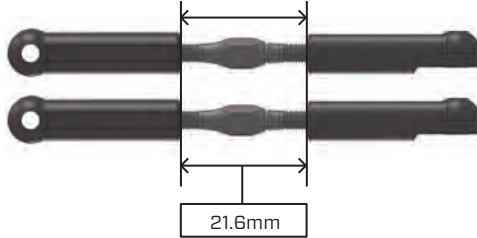
Turnbuckle
48mm
TWSM00087
x 6pcs

Turnbuckles Assembly

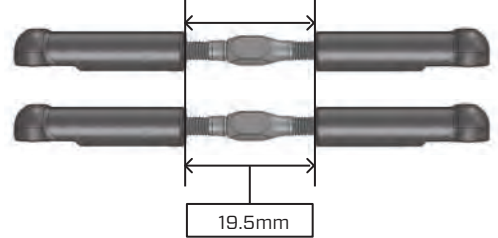
Camber / Steering Link Assembly



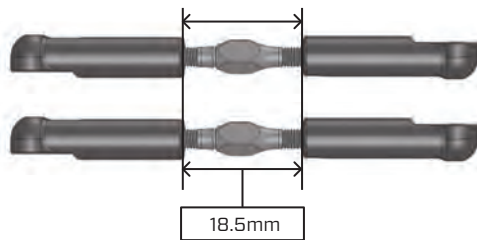
1 Front Camber Link



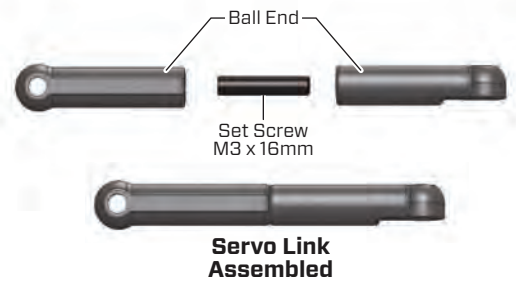
2 Rear Camber Link



3 Steering Link



Servo Link Assembly



STEP 1

BAG K / BEUTEL K
BORSA K / バッグ K



C-Hub Left
13 Degree
GTB4P0801
x 1pc



C-Hub Right
13 Degree
GTB4P0802
x 1pc



Bushing Steering
Knuckle
TWSM00014
x 4pcs



Shim
3.1 x 6 x 1mm
TWSM00059
x 2pcs



Button Head Screw
M3x12mm
TWSSW00002
x 4pcs



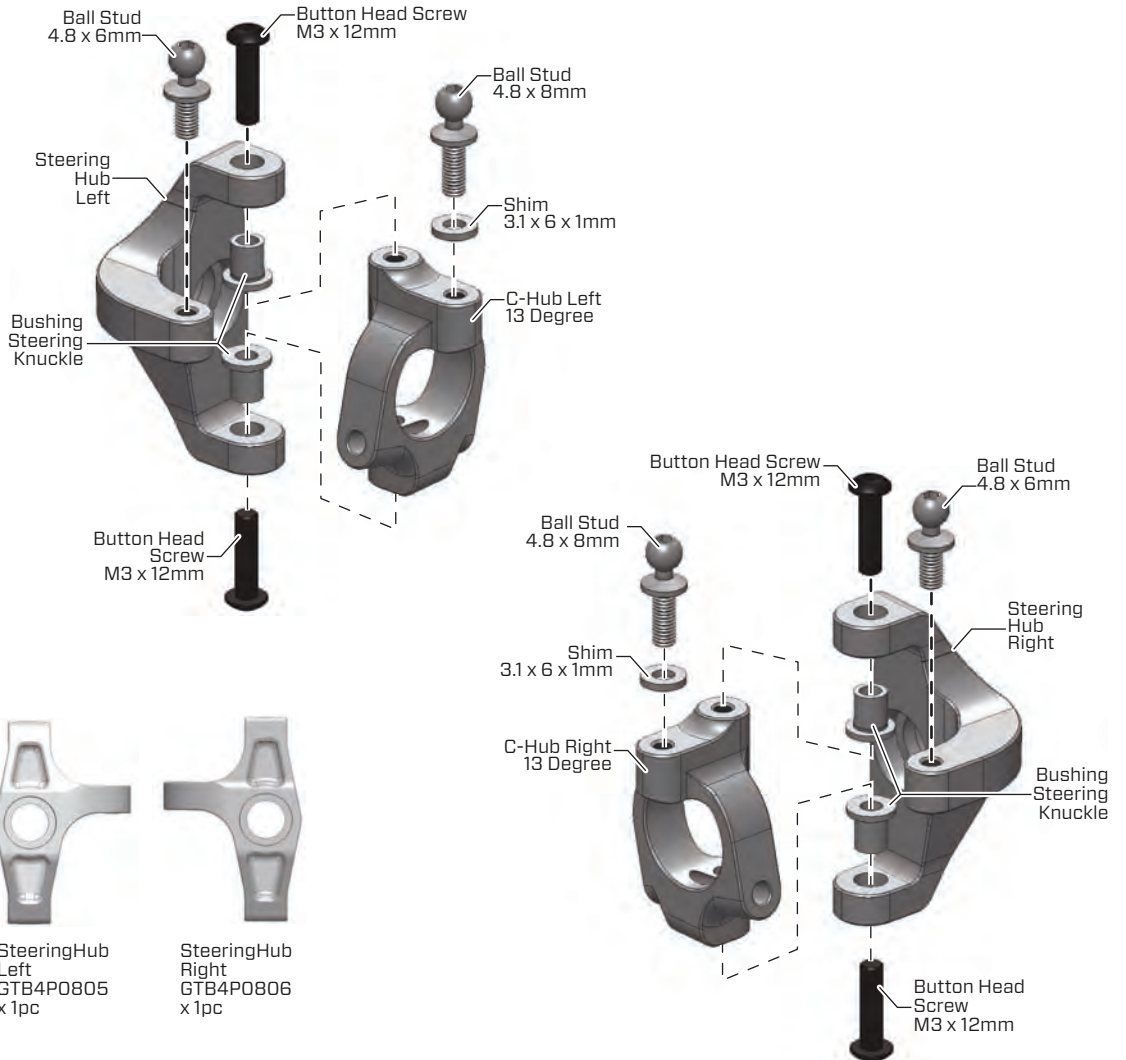
Ball Stud
4.8 x 6mm
TWSM00002
x 2pcs



Ball Stud
4.8 x 8mm
TWSM00003
x 2pcs

Front Steering Knuckle Assembly

1



K STEP 2 - 4

BAG K / BEUTEL K
BORSA K / バッグ K



Ball Bearing
5 x 11 x 4mm
TWSM00092
x 4pcs



Mid Diff Shaft
Pin B
TWSM00041
x 2pcs



Pin
2.5 x 8.5mm
TWSM00047
x 2pcs



Socket Head Screw
M2 x 5mm
TWSSW00016
x 2pcs



Mid Drive Shaft
Bushing
TWSM00040
x 2pcs



CVD Cover
Bushing
TWSM00019
x 2pcs



Front Wheel
Adapter
TWSM00026
x 2pcs



Front Wheel Axle
TWSM00027
x 2pcs



Thread-lock
CHM-G00059
(BAG R)



CVD Grease
CHM-G00058



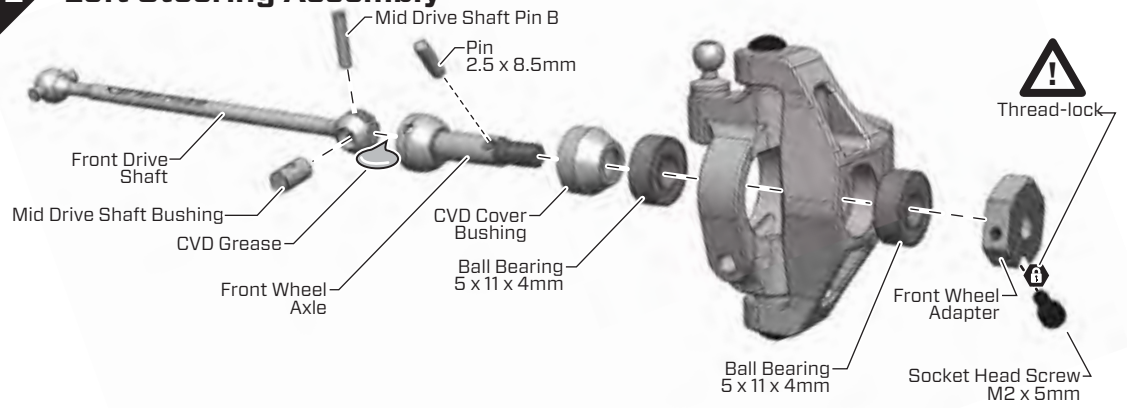
M3 Lock Nut
MASM1168A
x 2pcs



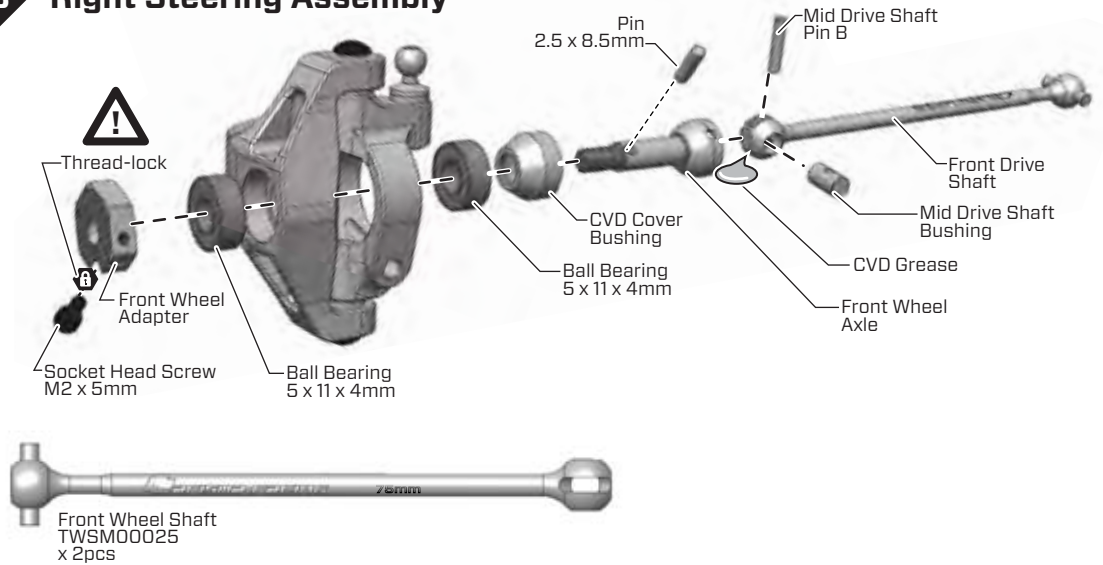
Hinge Pin
Front Outer
TWSM00032
x 2pcs

Front Steering Knuckle Assembly

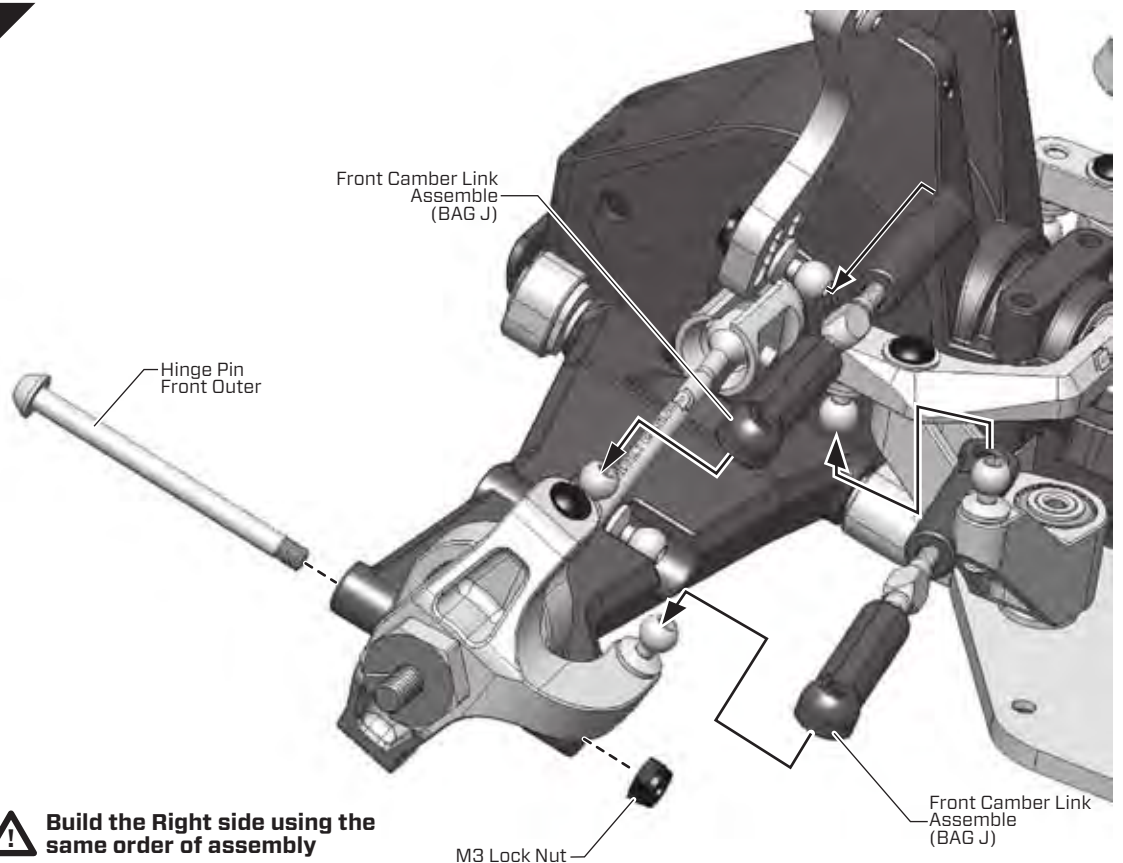
2 Left Steering Assembly



3 Right Steering Assembly



4

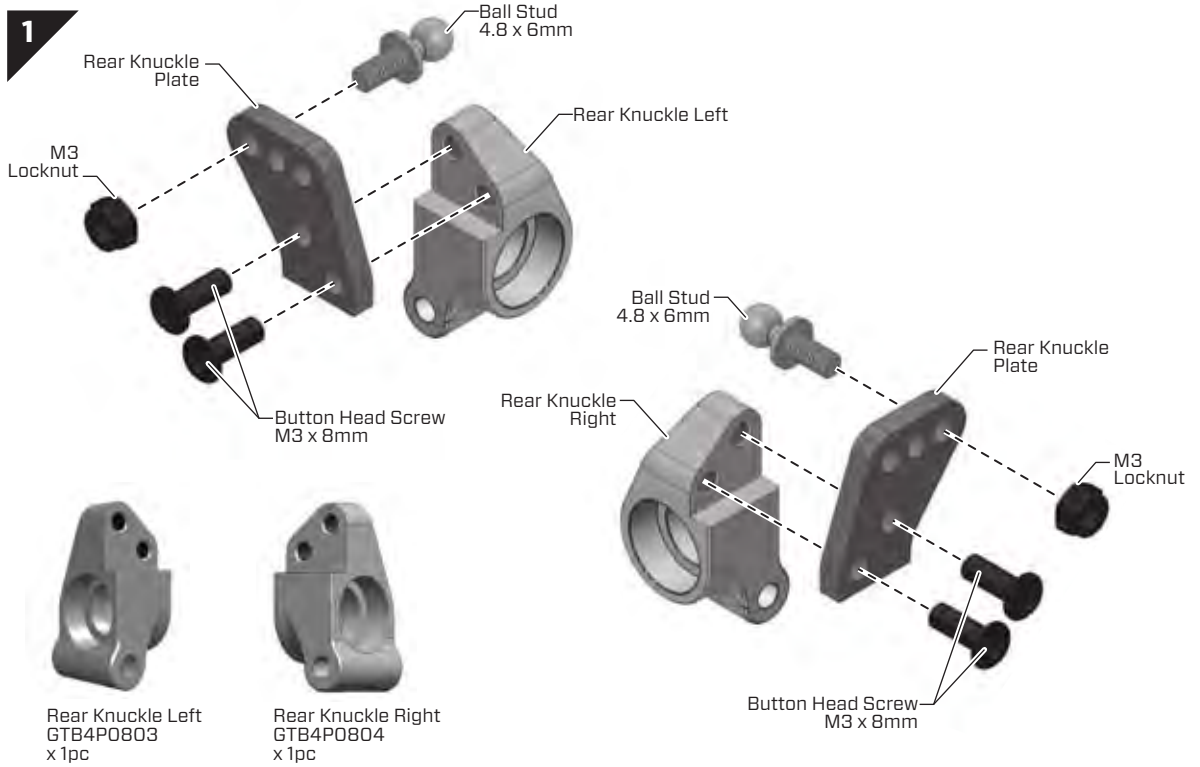


STEP 1 - 3

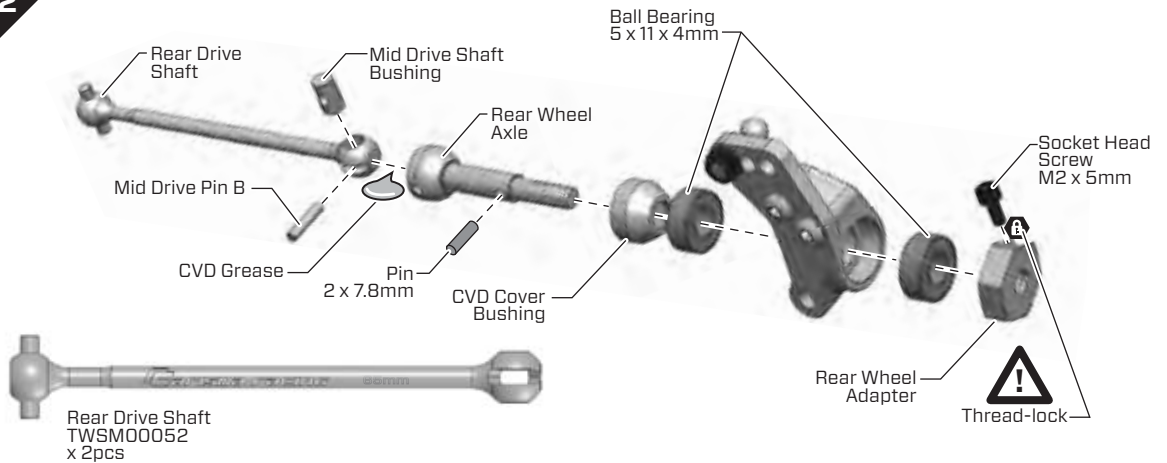
BAG L / BEUTEL L
BORSAL / バッグ L

Rear Hub Assembly

1

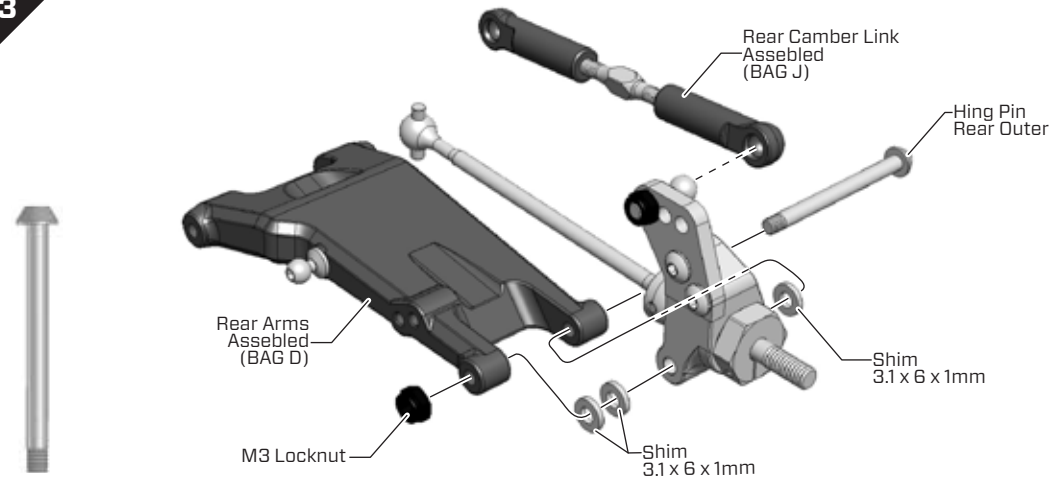


2



Build the Right side using the same order of assembly

3



Hing Pin Rear Outer
TWSM00034
x 2pcs



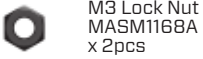
Build the Right side using the same order of assembly



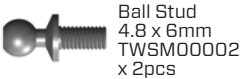
Rear Knuckle Plate
TWCBF00012
x 2pcs



Button Head Screw
M3 x 8mm
TWSSW00005
x 4pcs



M3 Lock Nut
MASM1168A
x 2pcs



Ball Stud
4.8 x 6mm
TWSM00002
x 2pcs



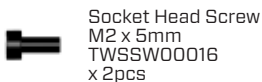
Ball Bearing
5 x 11 x 4mm
TWSM00092
x 4pcs



Mid Diff Shaft
Pin B
TWSM00041
x 2pcs



Pin
2.5 x 7.8mm
TWSM00048
x 2pcs



Socket Head Screw
M2 x 5mm
TWSSW00016
x 2pcs



Mid Drive Shaft
Bushing
TWSM00040
x 2pcs



Shim
3.1 x 6 x 1mm
TWSM00059
x 6pcs



M3 Lock Nut
MASM1168A
x 2pcs



CVD Cover
Bushing
TWSM00019
x 2pcs



Rear Wheel
Adapter
TWSM00055
x 2pcs



Rear Wheel Axle
TWSM00056
x 2pcs



Thread-lock
CHM-G00059
(BAG R)



CVD Grease
CHM-G00058

M STEP 1 - 8

Assemble the Front Shocks

BAG M / BEUTEL M
BORSAM / バッグ M

E-Clips
MASM053A
x 4pcs

Shim
3.1 x 6 x 1mm
TWSM00059
x 4pcs

Shock Piston
5 x 1.4mm
TWPRT00007
x 2pcs

Shock Seal Bushing
TWPRT00008
x 2pcs

Shock Shim A
TWPRT00009
x 2pcs

Shock Shim B
TWPRT00010
x 2pcs

O-Ring Shock Seal
RBP-G00116
x 4pcs

O-Ring (Blue)
RBP-G00118
x 2pcs

O-Ring
9.12 x 8 x 0.56mm
RBP-G00120
x 2pcs

Shock Preload
O-Ring
RBP-G00115
x 2pcs

Shock Cap Lower
TWSM00062
x 2pcs

Ball End Shock
Lower
GTB4P0502
x 2pcs

Socket Head Screw
M2.5 x 5mm
TWSSW00015
x 2pcs

Shock Cap Upper
TWSM00063
x 2pcs

Shock Spring
Retainer
TWSSW00068
x 2pcs

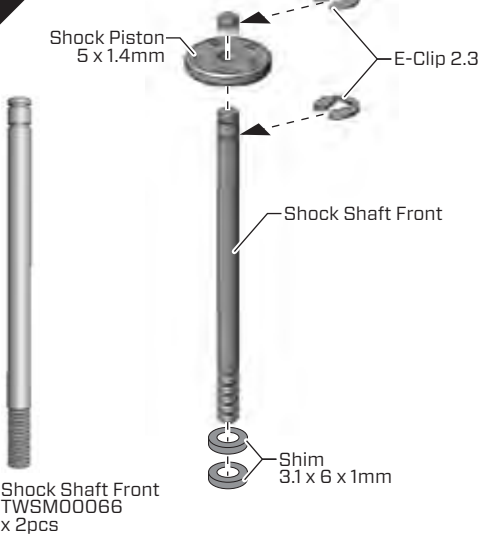
Shock Preload Nut
TWSSW00065
x 2pcs

O-Ring Shock Cap Upper
RBP-G00114
x 2pcs

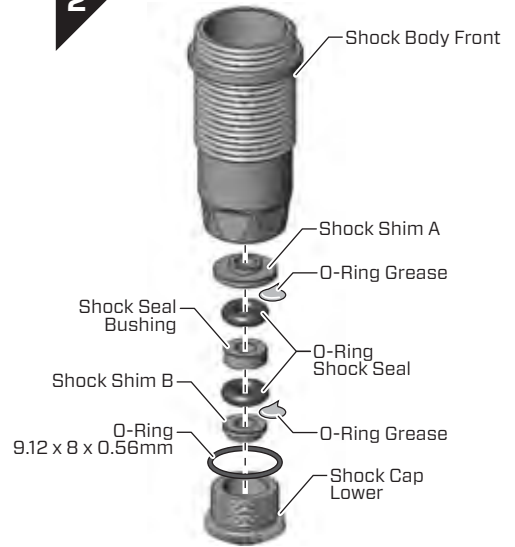
Shock Body Front
TWSM00060
x 2pcs

Assemble 2 Front Oil Shocs

1



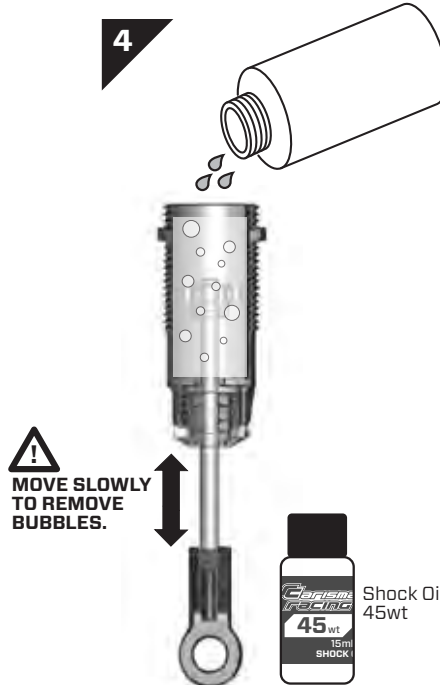
2



3



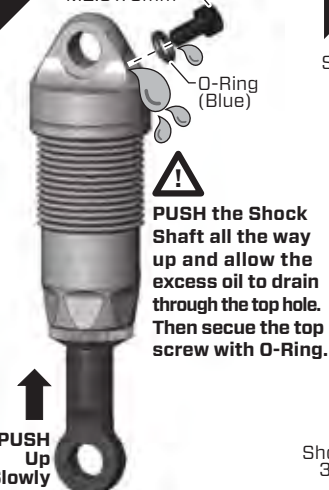
4



5



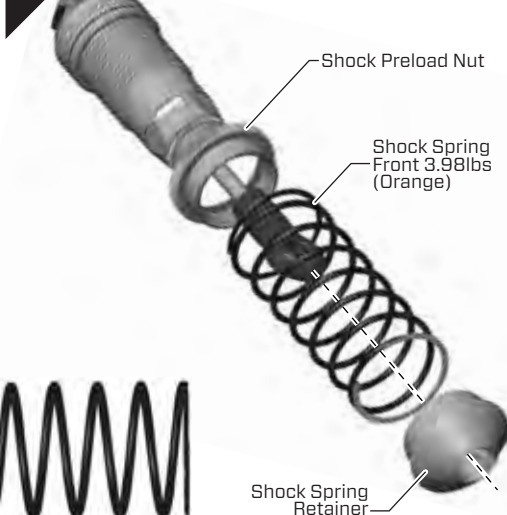
3



7



8



Shock Spring Front
3.98lbs (Orange)
MASM2528A
x 2pcs

M STEP 9 - 16

Assemble the Rear Shocks

BAG M / BEUTEL M
BORSAM / バッグ M

E-Clips
MASM053A
x 4pcs

Shim
3.1 x 6 x 1mm
TWSM00059
x 8pcs

Shock Piston
5 x 1.4mm
TWPRT00007
x 2pcs

Shock Seal Bushing
TWPRT00008
x 2pcs

Shock Shim A
TWPRT00009
x 2pcs

Shock Shim B
TWPRT00010
x 2pcs

O-Ring Shock Seal
RBP-G00116
x 4pcs

O-Ring (Blue)
RBP-G00118
x 2pcs

O-Ring
9.12 x 8 x 0.56mm
RBP-G00120
x 2pcs

Shock Preload
O-Ring
RBP-G00115
x 2pcs

Shock Cap Lower
TWSM00062
x 2pcs

Ball End Shock
Lower
GTB4P0502
x 2pcs

Socket Head Screw
M2.5 x 5mm
TWSSW00015
x 2pcs

Shock Cap Upper
TWSM00063
x 2pcs

Shock Spring
Retainer
TWSSW00068
x 2pcs

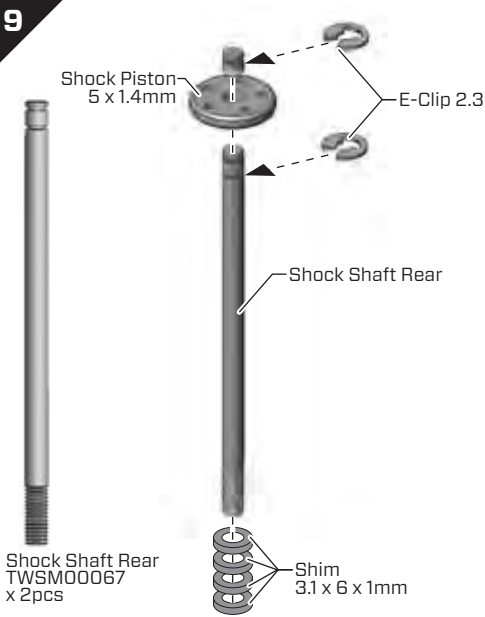
Shock Preload Nut
TWSSW00065
x 2pcs

O-Ring Shock Cap Upper
RBP-G00114
x 2pcs

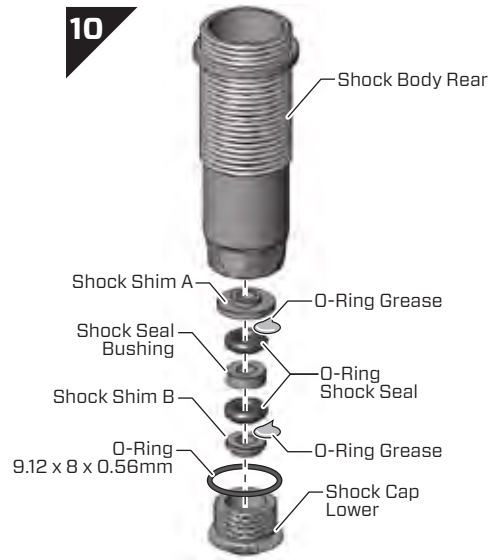
Shock Body Rear
TWSM00061
x 2pcs

Assemble 2 Rear Oil Shocks

9



10



11



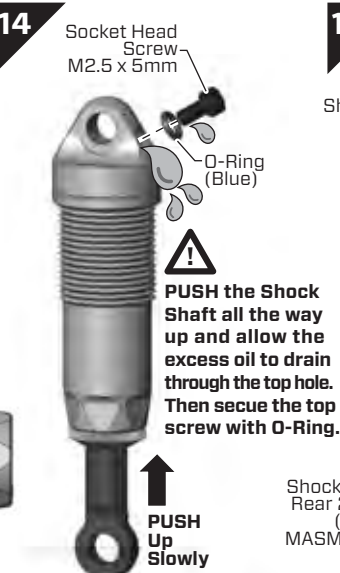
12



13



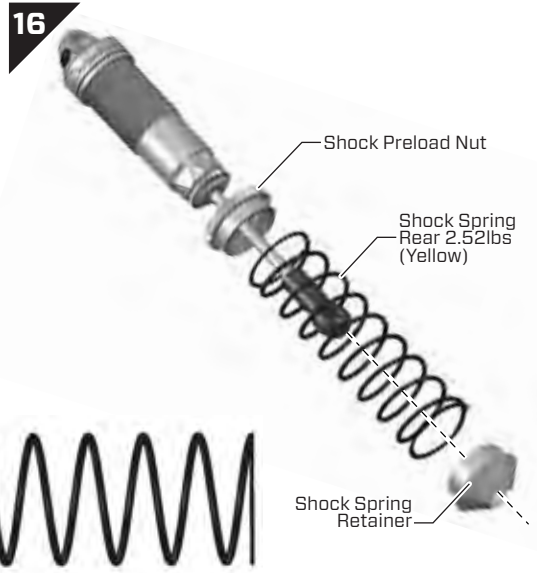
14



15



16



24

Shock Body Rear
TWSM00061
x 2pcs

Shock Spring
Rear 2.52lbs
(Yellow)
MASM2532A
x 2pcs

Shock Spring
Retainer

PUSH
Up
Slowly

MOVE SLOWLY
TO REMOVE
BUBBLES.

PUSH the Shock
Shaft all the way
up and allow the
excess oil to drain
through the top hole.
Then secure the top
screw with O-Ring.

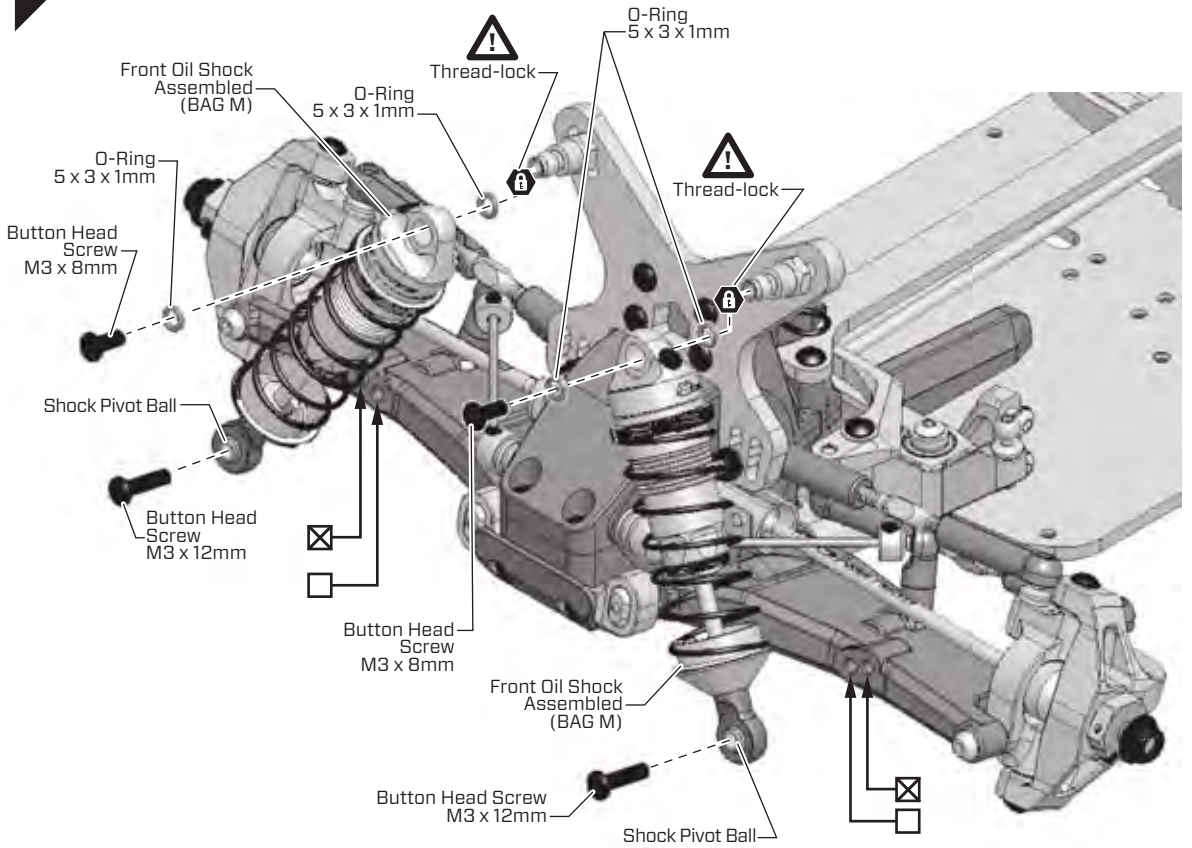
N STEP 1 - 2

BAG N / BEUTEL N
BORSA N / バッグ N

-  Button Head Screw
M3 x 8 mm
TWSSW00005
x 4pcs
-  Button Head Screw
M3 x 12 mm
TWSSW00002
x 4pcs
-  Shock Pivot Ball
TWSM00050
x 4pcs
-  O-RING
5 x 3 x 1 mm
RBP-G00113
x 8pcs
-  Thread-lock
CHM-G00059
(BAG R)

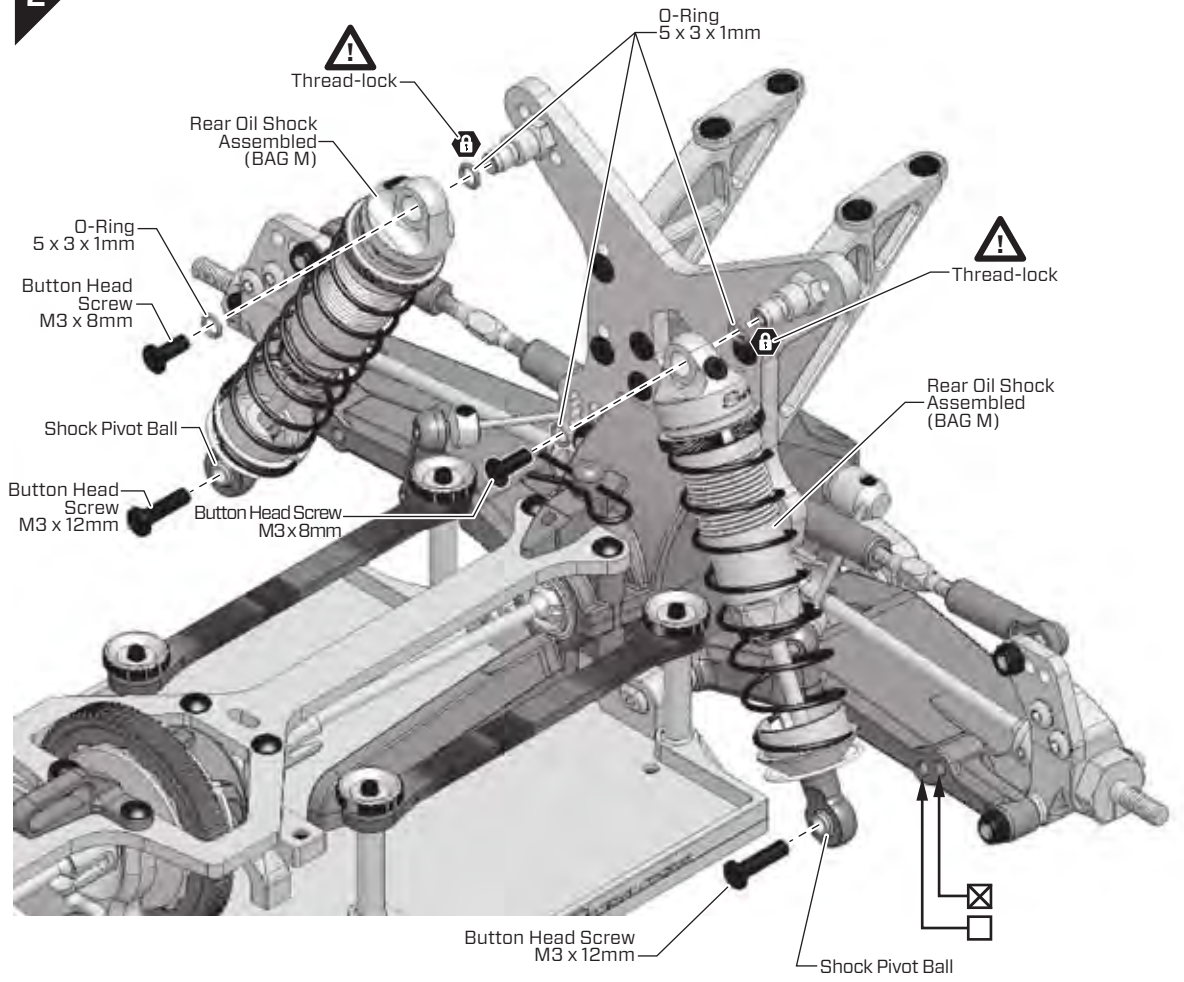
Front Shock Installation

1



Rear Shock Installation

2



STEP 1-3

BAG 0 / BEUTEL 0
BORSA 0 / バッグ 0

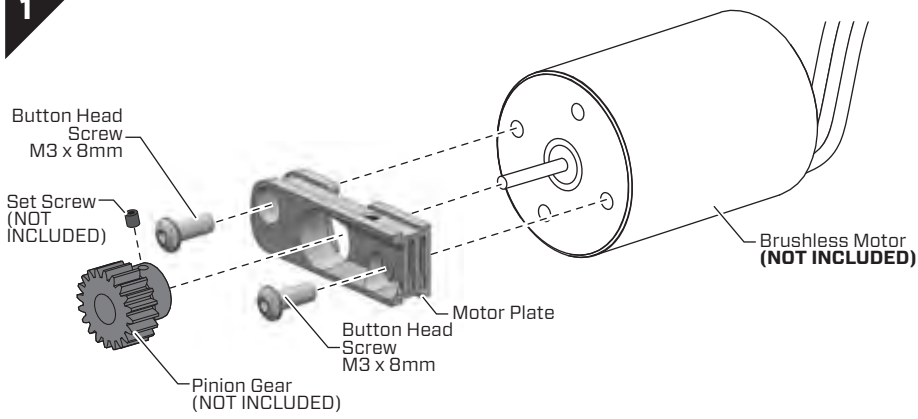
Button Head Screw
M3 x 8 mm
TWSSW00005
x 4pcs



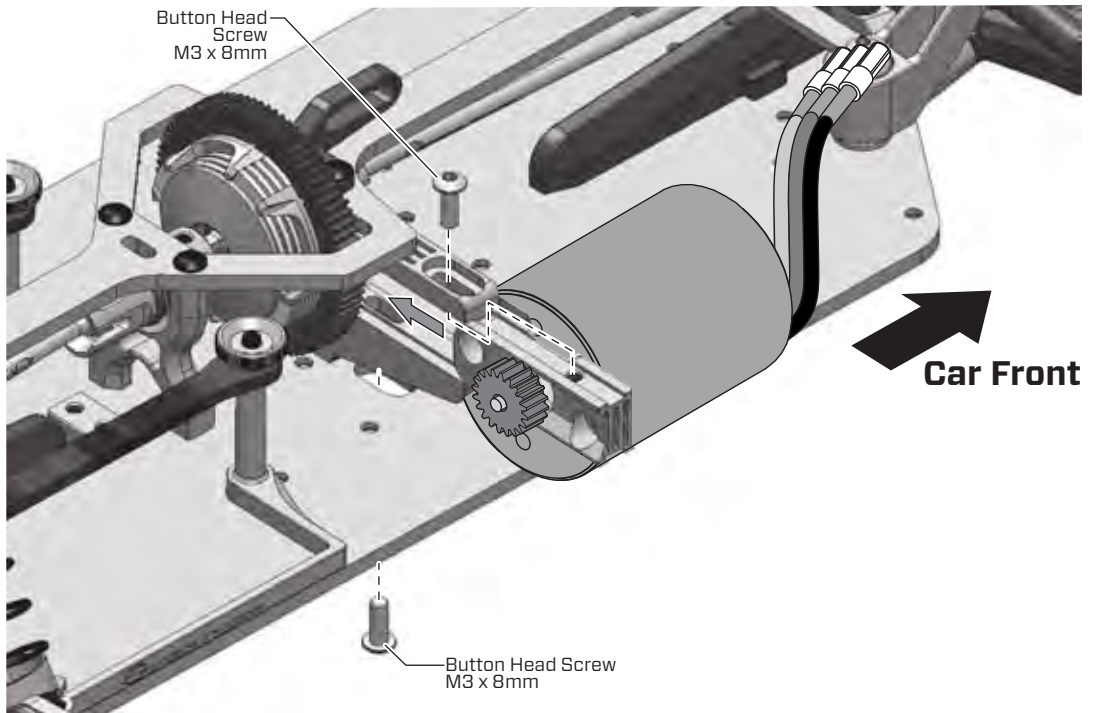
Motor Plate
TWSM00044
x 1pc

Installing the Brushless Motor (NOT INCLUDED)

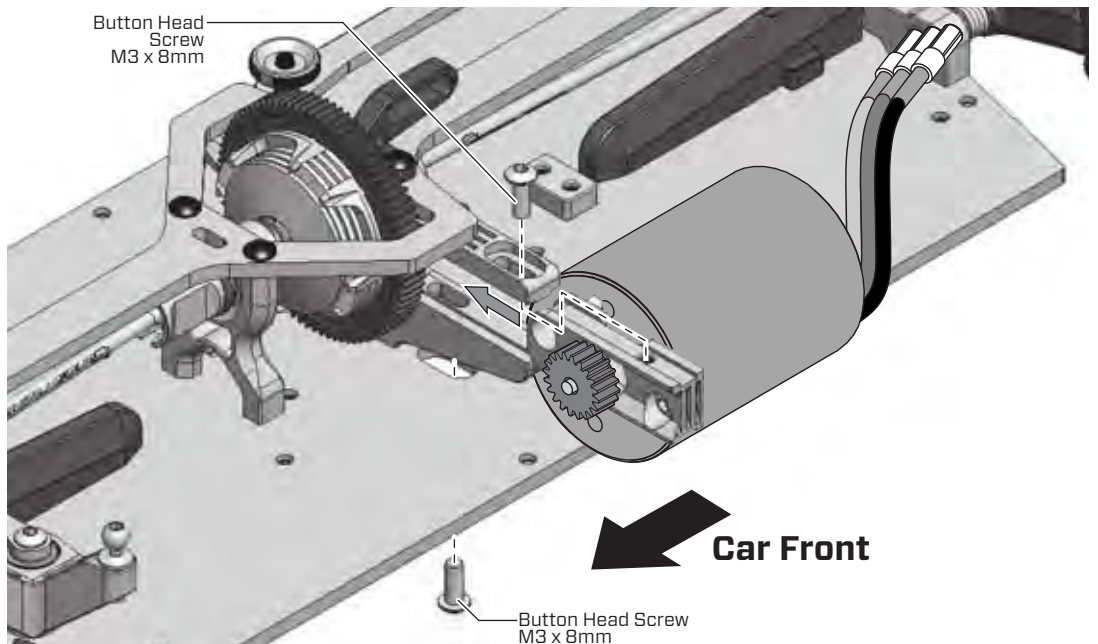
1



2 Saddle Pack Installation



3 Shorty Pack Installation

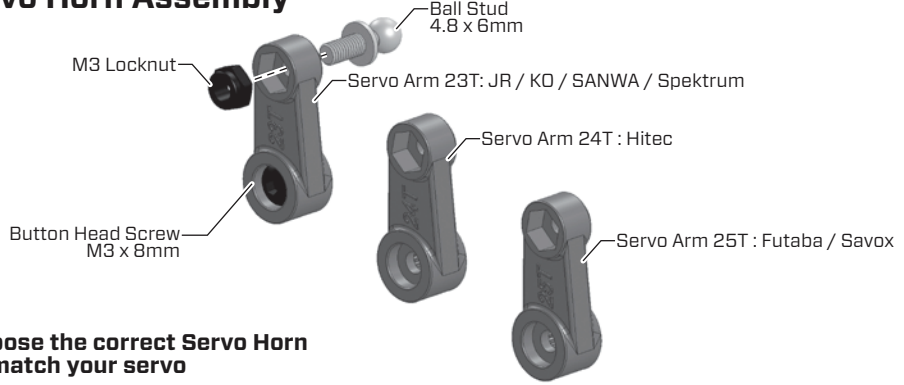


P STEP 1 - 3

BAG P / BEUTEL P
BORSA P / バッグ P

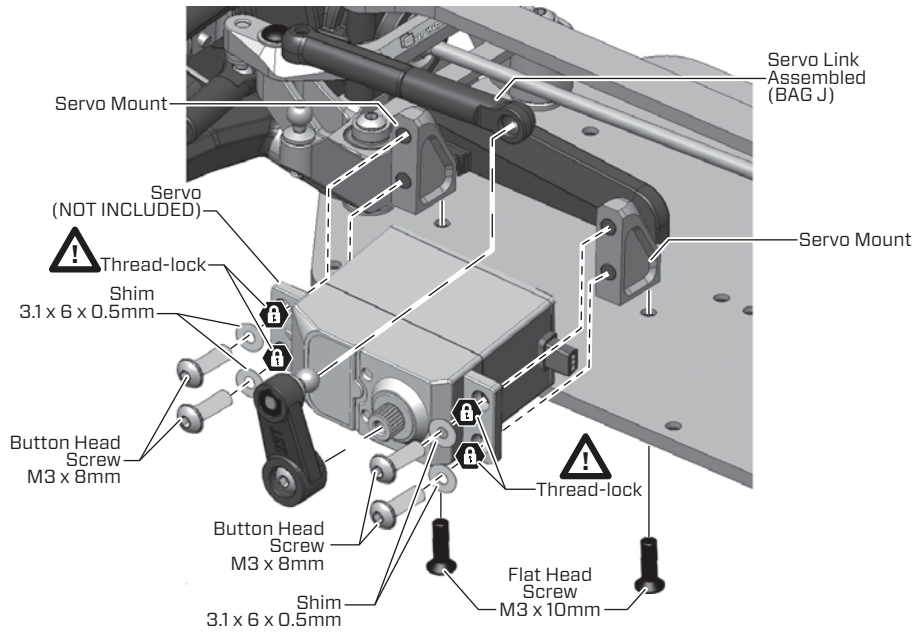
Servo & ESC Assembly

1 Servo Horn Assembly

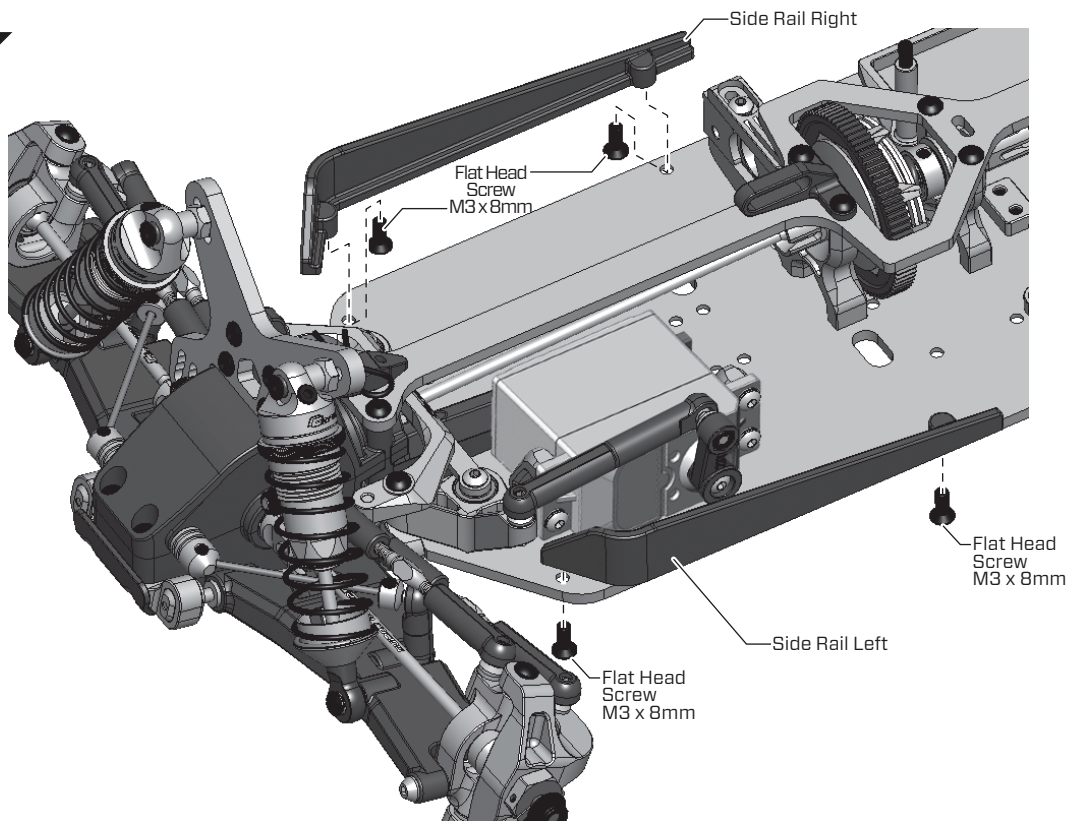


! Choose the correct Servo Horn to match your servo

2



3



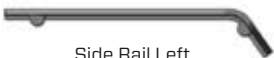
Servo Arm 23T
GBT4P0305
x1pc



Servo Arm 24T
GBT4P0304
x1pc



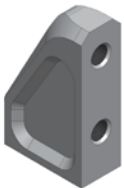
Servo Arm 25T
GBT4P0303
x1pc



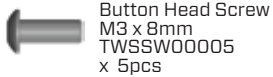
Side Rail Left
GTB4P0301
x1pc



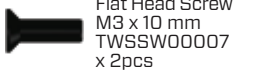
Side Rail Right
GTB4P0302
x1pc



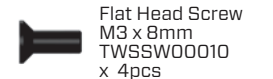
Servo Mount
TWSM00057
x2pcs



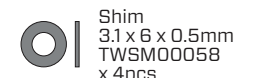
Button Head Screw
M3 x 8mm
TWSSW00005
x 5pcs



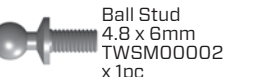
Flat Head Screw
M3 x 10mm
TWSSW00007
x 2pcs



Flat Head Screw
M3 x 8mm
TWSSW00010
x 4pcs



Shim
3.1 x 6 x 0.5mm
TWSM00058
x 4pcs



Ball Stud
4.8 x 6mm
TWSM00002
x 1pc



M3 Lock Nut
MASM1168A
x 1pc



Thread-lock
CHM-600059
(BAG R)

P STEP 4 - 6

BAG P / BEUTEL P
BORSA P / バッグ P

Flat Head Screw
M3 x 8mm
TWSSW00010
x 1pc



Antenna Mount
GTB4P0603
x 1pc



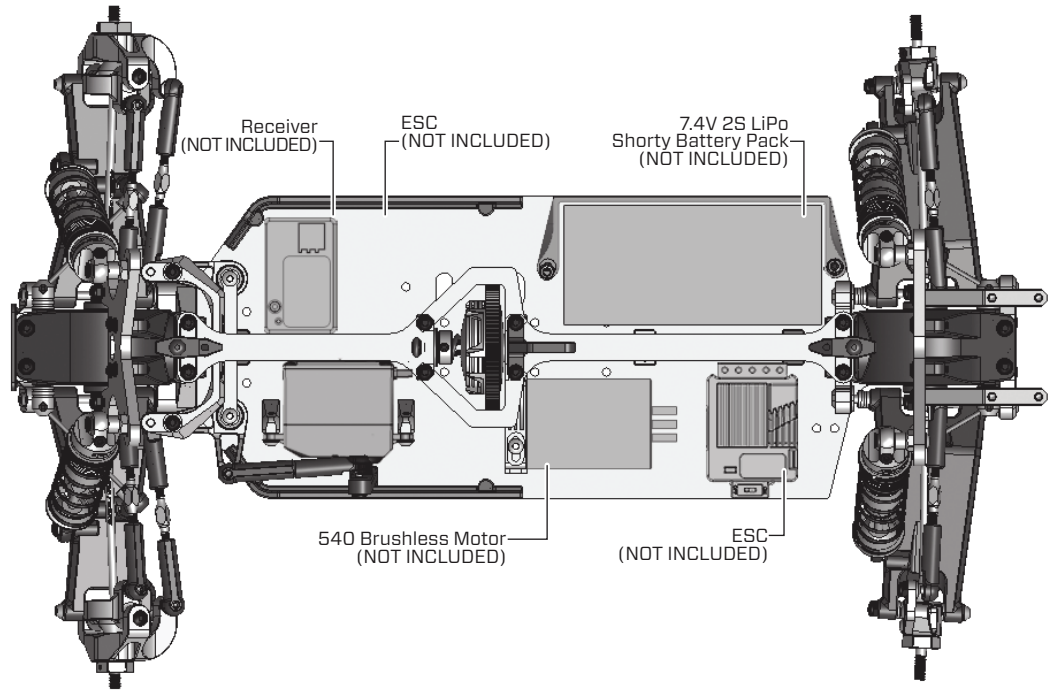
Antenna Cap
RBP-G00055
x 1pc



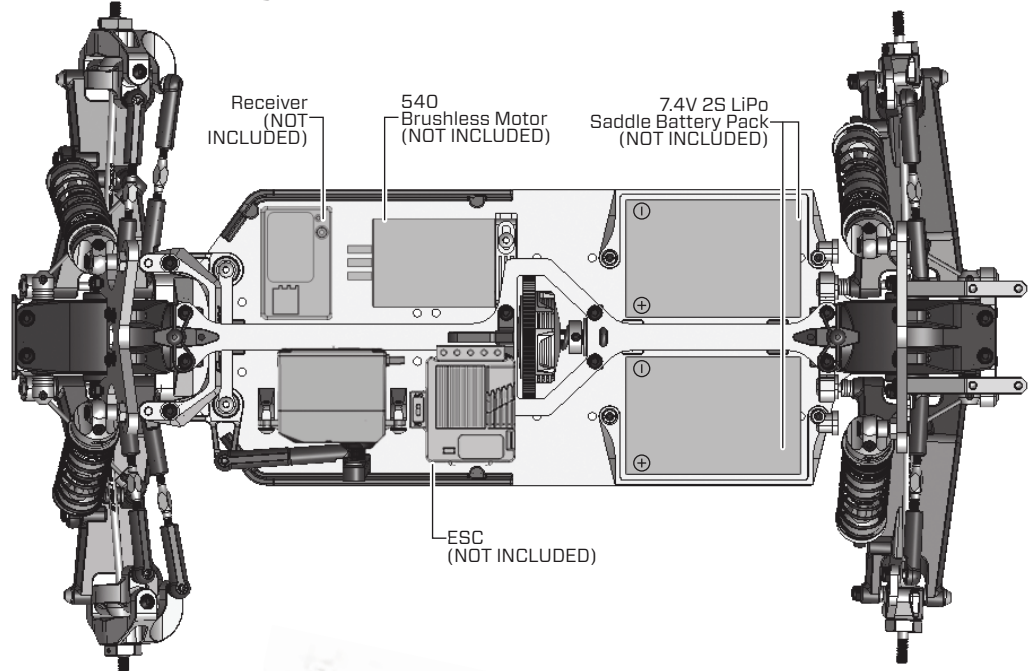
Antenna Tube
(L54mm)
APT-G00022
x 1pc

Mounting the ESC and Receiver

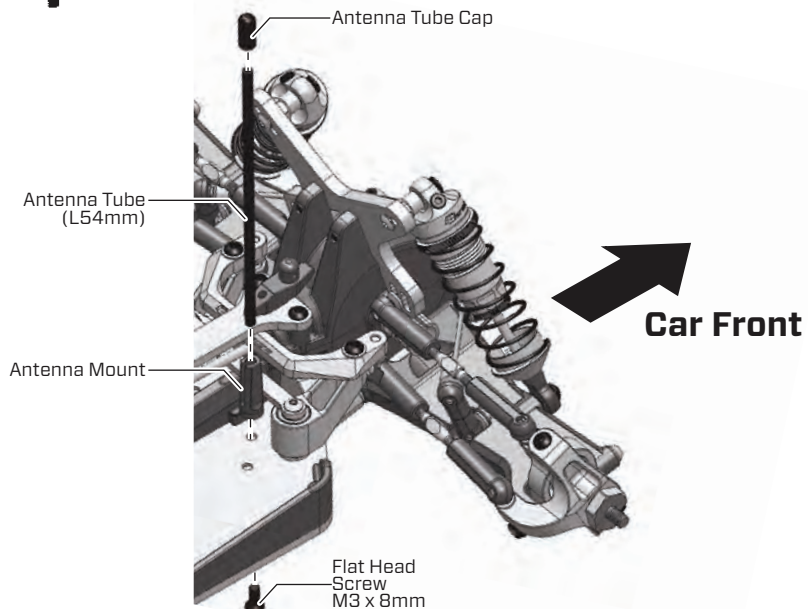
4 Shorty Pack Layout



5 Saddle Pack Layout



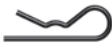
6



Q

STEP 1

BAG I1 / BEUTEL I1
BORSA I1 / バッグ I1



Body Clip
MASM032A
x 2pcs



Flat Head Screw
M3 x 6mm
TWSSW00009
x 4pcs

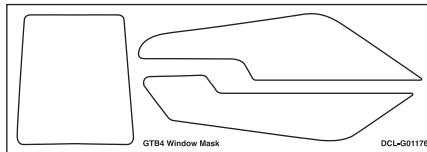
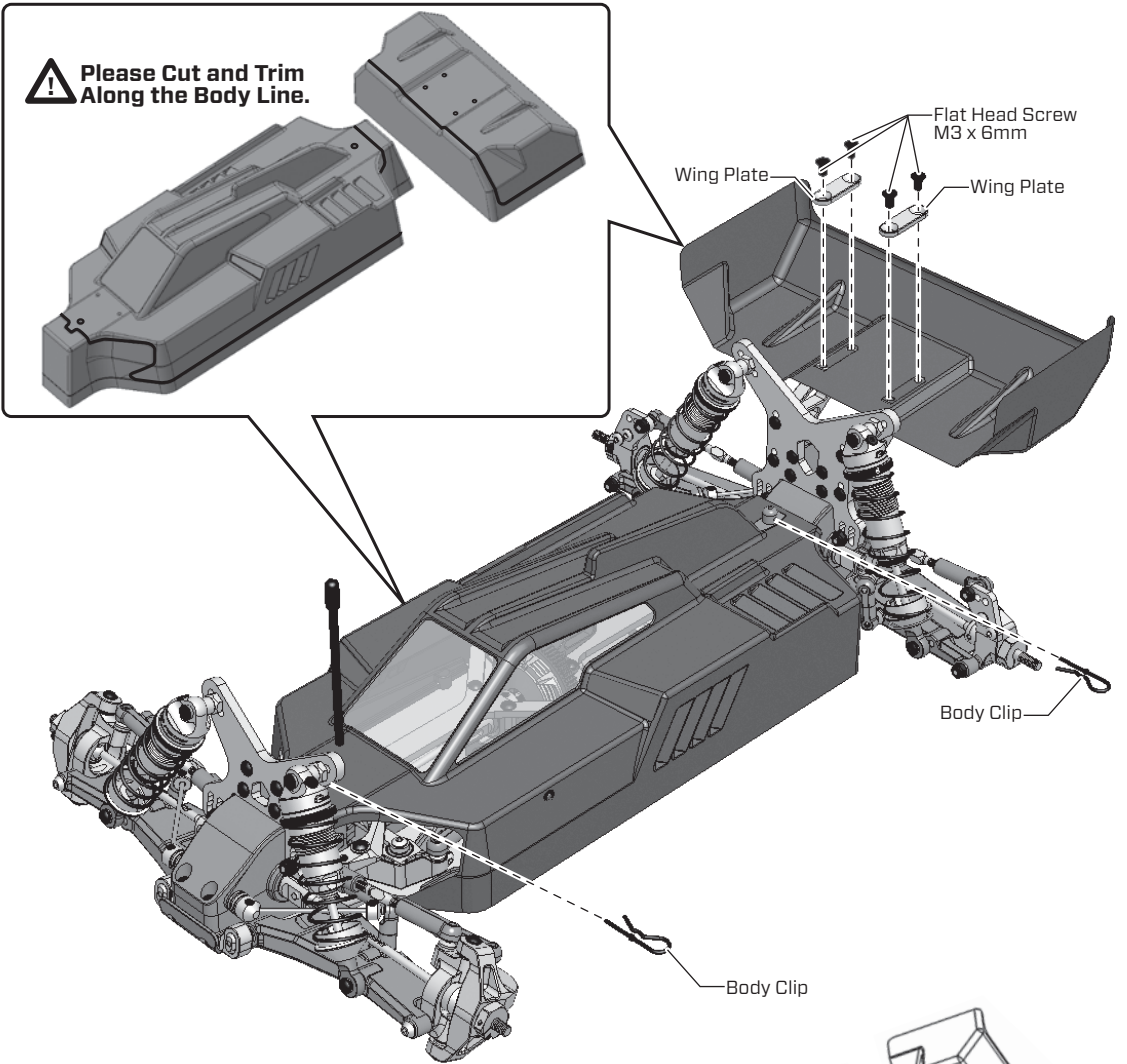


Wing Plate
TWSM00089
x 2pcs

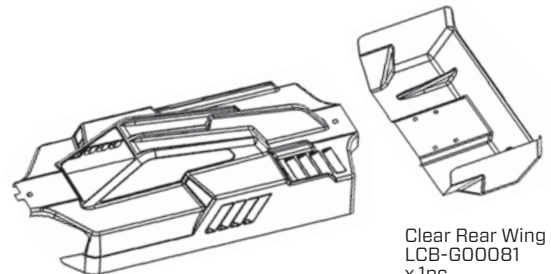


Car Body Decal
DCC-G00334
x 1pc
(FROM MANUAL BAG)

Body & Wing Assembly



Window Mask
DCL-G01176
x 1pc
(FROM MANUAL BAG)



Clear Car Body
LCB-G00080
x 1pc

Clear Rear Wing
LCB-G00081
x 1pc

⚠ Please Trim According to the Wing Profile

R

BAG R

BAG R / BEUTEL R
BORSA R / バッグ R

O-Ring Grease And Thread-lock Bag



O-Ring Grease
CHM-G00057
x 1pc



Thread-lock
CHM-G00059
x 1pc

S

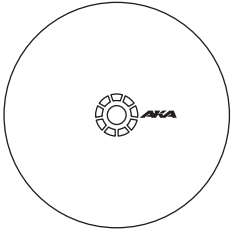
STEP 1

BAG S / BEUTEL S
BORSA S / バッグ S

Front And Rear Wheel Assembly



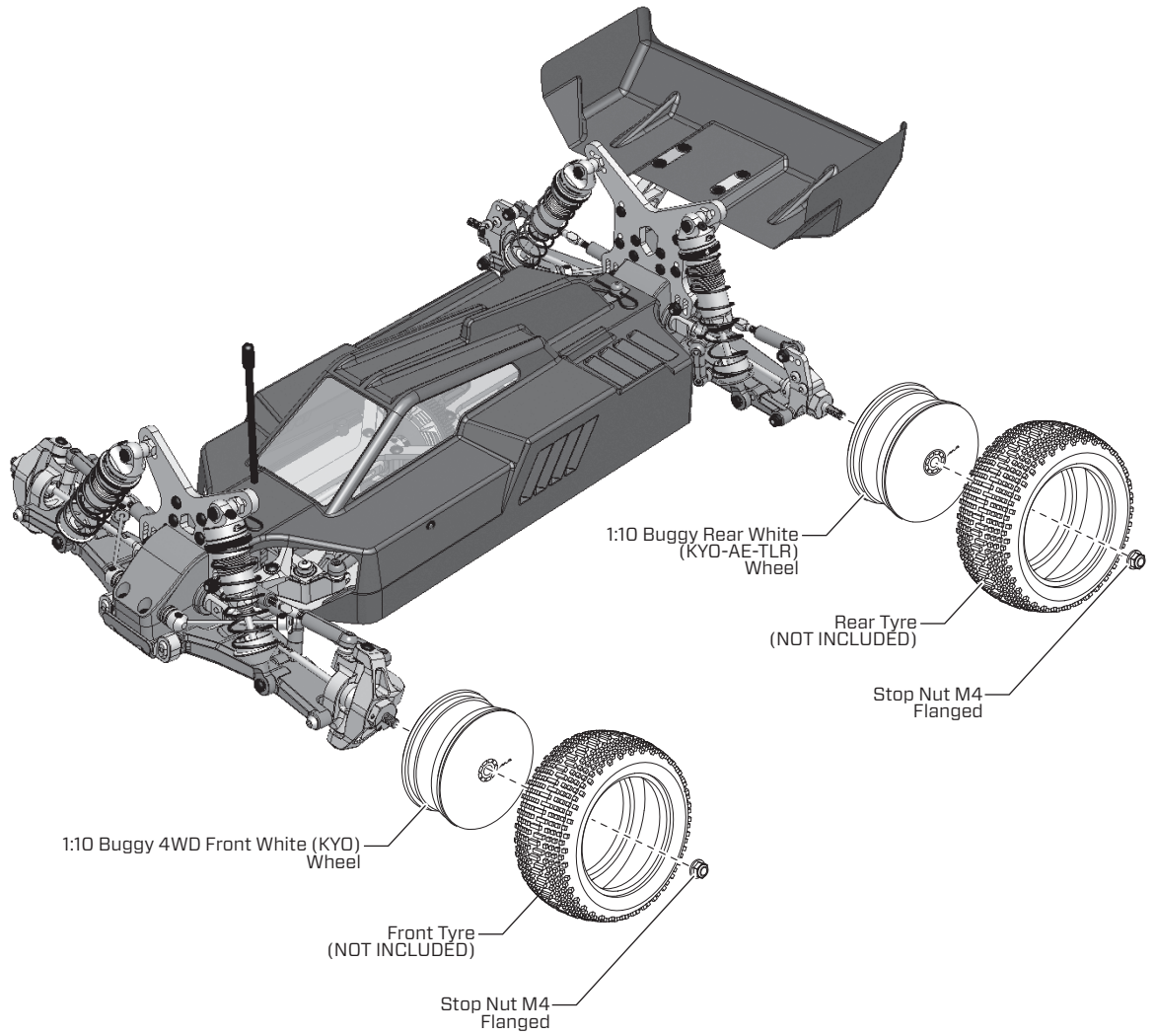
23301W 1:10 Buggy 4WD
Front White (KYD) Wheel
RTA-G00003
x 2pcs



23101W 1:10 Buggy 4WD
Front White (KYD-AE-TLR)
Wheel
RTA-G00002
x 2pcs



Stop Nut
M4 Flanged
MASM2537A
x 4pcs



Spare Part List

Item Number	Product Name
15463	4XS Shock Shaft Ball End Set
15464	4XS Ø5.8 Shock Pivot Ball Set
15465	4XS Shock Mount Stud Set
15466	4XS Shock Piston 5 x 1.4mm
15467	4XS Shock Seal Parts Set
15468	4XS Shock O-Ring Set
15469	4XS Shock Top Cap (Pair)
15470	4XS Shock Preload Nut Set
15471	4XS Shock Lower Cap Set
15472	4XS Aluminium Shock Spring Retainer Set
15473	4XS Shock Shaft Front (Pair)
15474	4XS Shock Shaft Rear (Pair)
15475	4XS Front Shock Body(Pair)
15476	4XS Rear Shock Body(Pair)
15477	4XS F/R Oil Shock Set
15478	4XS Shock Spring Front (Blue)
15479	4XS Shock Spring Front (Green)
15480	4XS Shock Spring Front (White)
15481	4XS Shock Spring Front (Yellow)
15482	4XS Shock Spring Front (Orange)
15483	4XS Shock Spring Front (Red)
15484	4XS Shock Spring Rear (Blue)
15485	4XS Shock Spring Rear (Green)
15486	4XS Shock Spring Rear (White)
15487	4XS Shock Spring Rear (Yellow)
15488	4XS Shock Spring Rear (Orange)
15489	4XS Shock Spring Rear (Red)
15490	4XS Copmplete Anti Roll Bar Set
15491	4XS Ø4.8 Swaybar Pivot Ball Set
15492	4XS Ø4.8 Ball End Set
15493	4XS Ø4.8 Ball End Set
15494	4XS Sway Bar Axle, Front
15495	4XS Sway Bar Axle, Rear
15496	4XS Turnbuckle Set
15497	4XS M4 Flanged Locknut Narrow Type)
15498	4XS Front Wheel Adapter (Pair)
15499	4XS Rear Wheel Adapter (Pair)
15500	4XS Front Wheel (White Aka) Pair
15501	4XS Rear Wheel (White Aka) Pair
15502	4XS Front Wheel Axle (Pair)
15503	4XS Front Cvd (Pair)
15504	4XS Rear Cvd (Pair)
15505	4XS Servo Horn 23T
15506	4XS Servo Horn 24T
15507	4XS Servo Horn 25T
15508	4XS Servo Stand (Pair)
15509	4XS Body Sticker Set
15510	4XS Body Set
15511	4XS Rear Wing 2.0mm (Clear)
15512	4XS Body Mount
15513	4XS Antenna Holder
15514	4XS Wing Mount (Pair)
15515	4XS CF Suspension Plate Front
15516	4XS CF Suspension Plate Rear
15517	4XS CF Chassis Plate
15518	4XS CF Top Deck
15519	4XS CF Battery Holder Set (Saddle Pack)
15520	4XS CF Battery Holder Set (Shorty Pack)
15521	4XS CF Bell Crank Plate
15522	4XS CF Shock Tower Front
15523	4XS CF Shock Tower Rear
15524	4XS CF Rear Lunckle Plate Left
15525	4XS CF Rear Lunckle Plate Rear
15526	4XS Front Gear Box Housing Set
15527	4XS Rear Gear Box Housing Set
15528	4XS Gear Box Housing Crush Tube Set
15529	4XS Gear Box Mounting Inserts
15530	Carisma Racing Shock Oil 35wt
15531	Carisma Racing Shock Oil 45wt
15532	Carisma Racing Diff Grease 3.5k
15533	Carisma Racing Diff Grease 7k
15534	Carisma Racing Diff Grease 100k
15535	Carisma Racing O-Ring Grease
15536	Carisma Racing Cvd Grease
15537	4XS Aluminium Suspension Mount FF
15538	4XS Aluminium Suspension Mount FR
15539	4XS Aluminium Suspension Mount RF
15540	4XS Aluminium Suspension Mount RR
15541	4XS Suspension Insert Set
15542	4XS Ball Bearing (8 x 12 x 3.5mm)

Item Number	Product Name
15543	4XS Ball Bearing (5 x 10 x 4mm)
15544	4XS Ball Bearing (5 x 11 x 4mm)
15545	4XS Ball Bearing (10 x 15 x 4mm)
15546	4XS Aluminium Centre Mount A
15547	4XS Aluminium Centre Motor Mount B
15548	4XS Motor Mount
15549	4XS 83T Spur Gear (48p)
15550	4XS Pinion Support Ring
15551	4XS Input Drive Shaft Set
15552	4XS Crunch Spacer, Input Drive Shaft
15553	4XS Mid Drive Shaft Long
15554	4XS Mid Drive Shaft Short
15555	4XS Rear Drive Shaft (Pair)
15556	4XS Steering King Pin Bushing Set
15557	4XS Steering Bushing Set
15558	4XS Steering Bell Crank Post Set
15559	4XS Diff Spider Gear Set (12T)
15560	4XS Diff Input Pinion Gear Set (15T)
15561	4XS Diff Crown Gear Set (21T)
15562	4XS Diff Ring Gear Set (39T)
15563	4XS Drive Shaft Coupling Pin Set
15564	4XS Diff Gasket Set
15565	4XS Slipper Pad Set
15566	4XS Steering Hub Set (L & R)
15567	4XS 13° Hub Carrier Set (L & R)
15568	4XS Rear Knuckle (L & R)
15570	4XS Steering Bell Crank A
15571	4XS Steering Bell Crank B
15572	4XS Hinge Pin Set
15573	4XS Bevel Gear Center Diff Parts Set
15574	4XS Slipper Set (UN Assemble)
15575	4XS Front Side Guards Set
15576	4XS Front Bumper
15577	4XS Cable Guide
15578	4XS Alum Steering Plate
15579	4XS Suspension Plate Front Set
15580	4XS Suspension Plate Rear Set
15581	4XS Diff Outdrive Set
15582	4XS Pin Set
15583	4XS Battery Holder Saddle Pack (Pair)
15584	4XS Battery Holder Shorty Pack
15585	4XS Battery Post & Thumb Nut Set
15586	4XS Plastic Battery Stopper
15587	4XS Button Head Screw M3 x 8mm
15588	4XS Button Head Screw M3 x 10mm
15589	4XS Button Head Screw M3 x 12mm
15590	4XS Button Head Screw M3 x 15mm
15591	4XS Button Head Screw M3 x 30mm
15592	4XS Flat Head Screw M3 x 6mm
15593	4XS Flat Head Screw M3 x 8mm
15594	4XS Flat Head Screw M2 x 10mm
15595	4XS Flat Head Screw M3 x 10mm
15596	4XS Flat Head Screw M3 x 16mm
15597	4XS Flat Head Screw M3 x 20mm
15598	4XS Shocket Hear Screw M2 x 5mm
15599	4XS Socket Hear Screw M2.5 x 5mm
15600	4XS Set Screw M3 x 3mm
15601	4XS Set Screw M3 x 8mm
15602	4XS Set Screw M3 x 16mm
15603	4XS Set Screw M3 x 20mm
15604	4XS Body Clip Set
15605	4XS Snap Ring A5 Set
15606	4XS 2.3 E-Clips Set
15607	4XS Shim Set (2.7 x 0.6 x 0.5)
15608	4XS Shim Set (3.1 x 6 x 1mm)
15609	4XS Shim Set (4.2 x 5.9 x 0.1mm)
15610	4XS Shim Set (10 x 12 x 0.1mm)
15611	4XS M3 Locknut Set
15612	4XS Ø4.8 x 6mm & Ø4.8 x 8mm Ball Stud Set
15613	4XS Alum Rear Knuckle Left
15614	4XS Alum Rear Knuckle Right
15615	4XS Alum Battery Stopper
15616	4XS Alum Steering Hub Left
15617	4XS Alum Steering Hub Right
15618	4XS Alum C-Hub Left 13 Degree
15619	4XS Alum C-Hub Right 13 Degree
15620	4XS 81T Spur Gear (48p)
15621	4XS 85T Spur Gear (48p)
15622	4XS Alum Battery Holder Saddle Pack
15623	4XS Alum Battery Holder Shorty

DRIVER: _____ DATE: _____ AIR TEMP.: _____ HUMIDITY: _____

TRACK: _____ TRACK CONDITION: _____ TRACK TEMP.: _____

FRONT WIDTH: _____ REAR WIDTH: _____ WHEELBASE: _____ mm

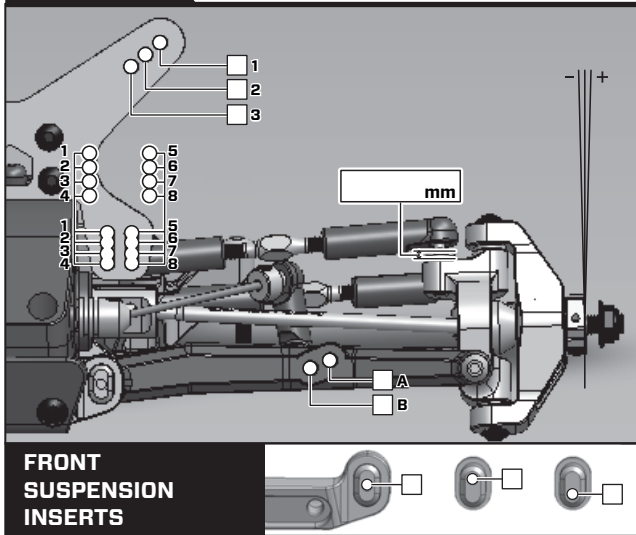
MOTOR: _____ RECEIVER: _____ SPUR GEAR: _____ PINION GEAR: _____

SERVO: _____ WING: _____ BATTERY: _____

FRONT TIRE INSERT: _____ REAR TIRE INSERT: _____ FRONT ANTI ROLL BAR: _____ mm

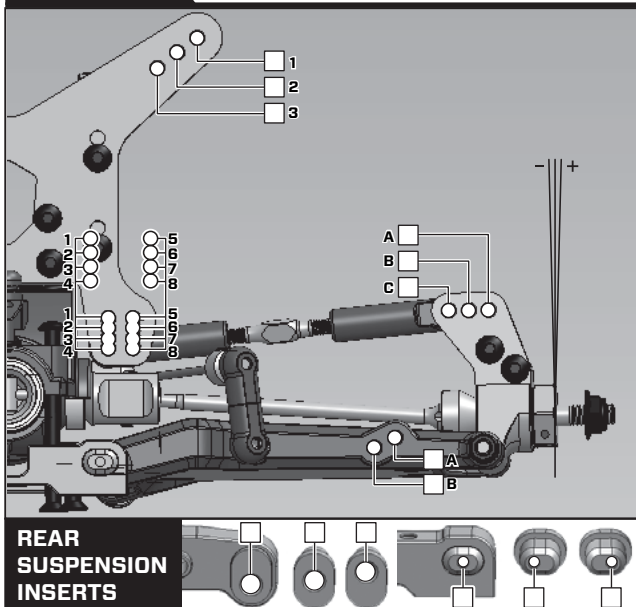
REAR ANTI ROLL BAR: _____ mm BEST LAP: _____

FRONT



CAMBER	FRONT TIRE	FRONT DIFF.
L _____	TYPE _____	_____ wt.
R _____	HARDNESS _____	GEAR DIFF. <input type="checkbox"/>
TOE ANGLE	OIL SHOCK	
_____		OIL _____
		OIL SHOCK LENGTH _____ mm
		PISTON _____
		Holes _____
		SPRING _____

REAR



CAMBER	REAR TIRE	REAR DIFF.
L _____	TYPE _____	_____ wt.
R _____	HARDNESS _____	GEAR DIFF. <input type="checkbox"/>
TOE ANGLE	OIL SHOCK	
_____		OIL _____
		OIL SHOCK LENGTH _____ mm
		PISTON _____
		Holes _____
		SPRING _____

MID GEAR DIFF.

T _____

wt. _____

MID SLIPPER

T _____

mm _____

REAR SUSPENSION SPACER

mm _____

mm _____

mm _____

mm _____

DRIVER: _____ DATE: _____ AIR TEMP.: _____ HUMIDITY: _____

TRACK: _____ TRACK CONDITION: _____ TRACK TEMP.: _____

FRONT WIDTH: _____ REAR WIDTH: _____ WHEELBASE: _____ mm

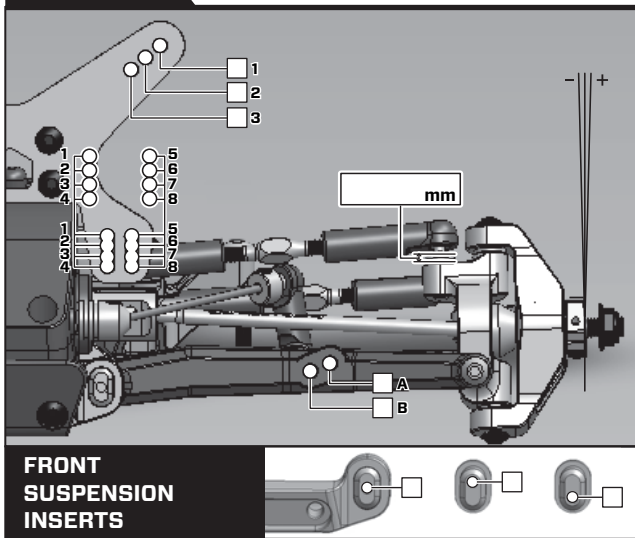
MOTOR: _____ RECEIVER: _____ SPUR GEAR: _____ PINION GEAR: _____

SERVO: _____ WING: _____ BATTERY: _____

FRONT TIRE INSERT: _____ REAR TIRE INSERT: _____ FRONT ANTI ROLL BAR: _____ mm

REAR ANTI ROLL BAR: _____ mm BEST LAP: _____

FRONT



CAMBER

L _____

R _____

FRONT TIRE

TYPE _____

HARDNESS _____

FRONT DIFF.

_____ wt.

GEAR DIFF.

TOE ANGLE

OIL SHOCK

_____ mm

OIL _____

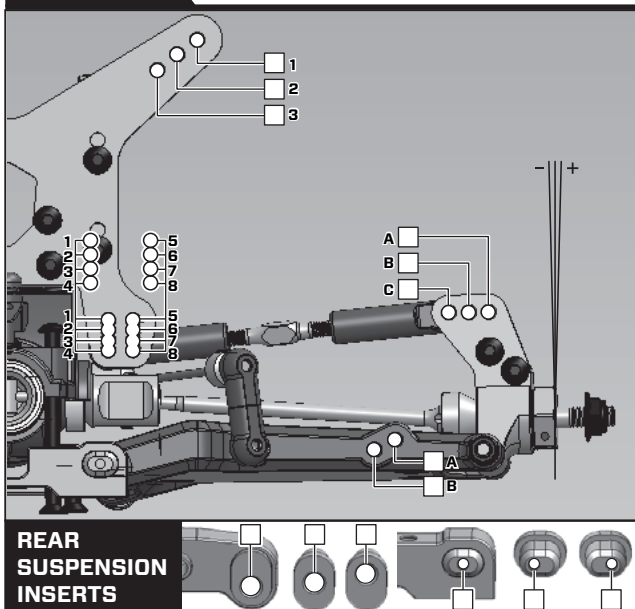
OIL SHOCK LENGTH _____ mm

PISTON _____

SPRING _____ Holes

_____ mm

REAR



CAMBER

L _____

R _____

REAR TIRE

TYPE _____

HARDNESS _____

REAR DIFF.

_____ wt.

GEAR DIFF.

TOE ANGLE

OIL SHOCK

_____ mm

OIL _____

OIL SHOCK LENGTH _____ mm

PISTON _____

SPRING _____ Holes

_____ mm

MID GEAR DIFF.

_____ T

_____ wt.

MID SLIPPER

_____ T

_____ mm

REAR SUSPENSION SPACER

_____ mm

_____ mm

_____ mm

_____ mm

DRIVER: _____ DATE: _____ AIR TEMP.: _____ HUMIDITY: _____

TRACK: _____ TRACK CONDITION: _____ TRACK TEMP.: _____

FRONT WIDTH: _____ REAR WIDTH: _____ WHEELBASE: _____ mm

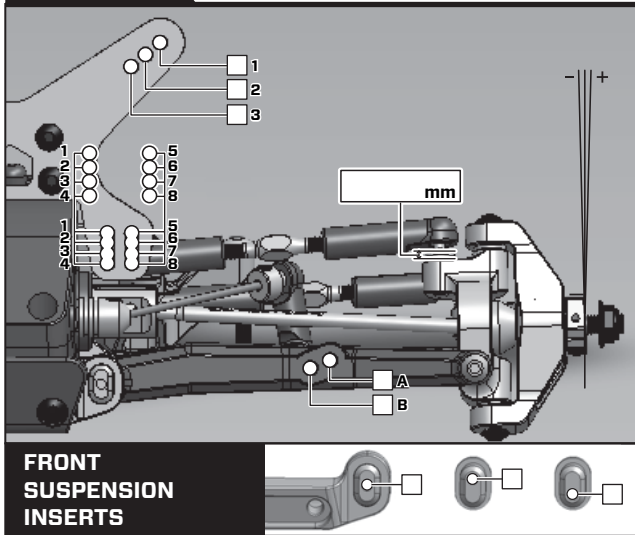
MOTOR: _____ RECEIVER: _____ SPUR GEAR: _____ PINION GEAR: _____

SERVO: _____ WING: _____ BATTERY: _____

FRONT TIRE INSERT: _____ REAR TIRE INSERT: _____ FRONT ANTI ROLL BAR: _____ mm

REAR ANTI ROLL BAR: _____ mm BEST LAP: _____

FRONT



CAMBER

L _____

R _____

FRONT TIRE

TYPE _____

HARDNESS _____

FRONT DIFF.

_____ wt.

GEAR DIFF.

TOE ANGLE

OIL SHOCK

OIL _____

_____ mm

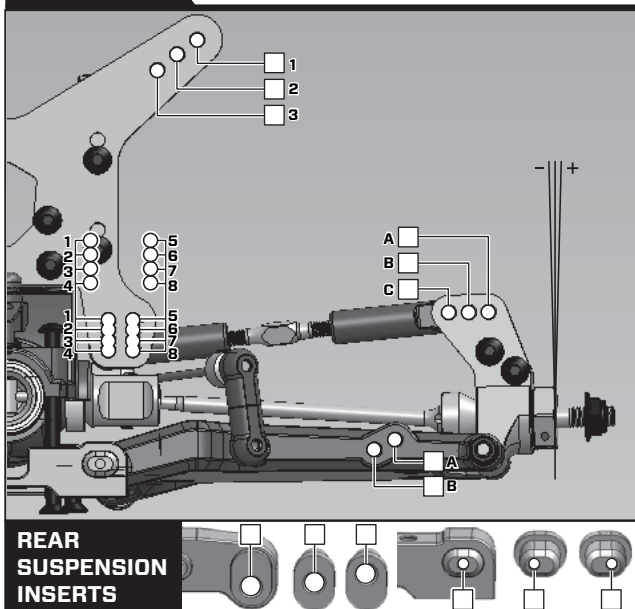
OIL SHOCK LENGTH _____ mm

PISTON _____

SPRING _____ Holes

_____ mm

REAR



CAMBER

L _____

R _____

REAR TIRE

TYPE _____

HARDNESS _____

REAR DIFF.

_____ wt.

GEAR DIFF.

TOE ANGLE

OIL SHOCK

OIL _____

_____ mm

OIL SHOCK LENGTH _____ mm

PISTON _____

SPRING _____ Holes

_____ mm

MID GEAR DIFF.

T _____

wt. _____

MID SLIPPER

T _____

mm _____

REAR SUSPENSION SPACER

mm _____

mm _____

mm _____

mm _____



Carisma[®]
RACING

