

C4.2

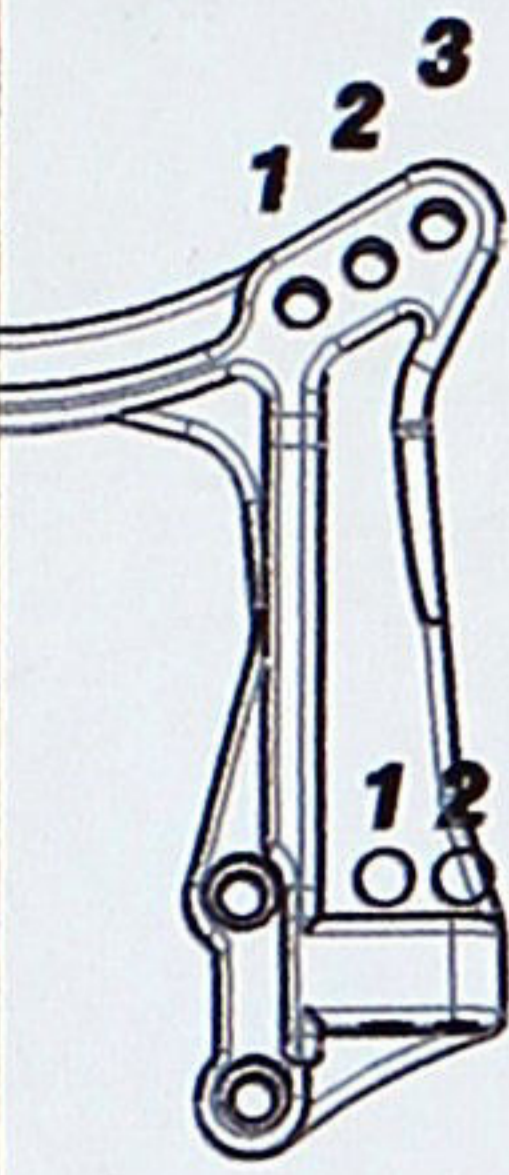


Setup Sheet

Driver: Billy Fischer
 Date: 3/16/2014
 Surface: Sugar
 Conditions: Sugar

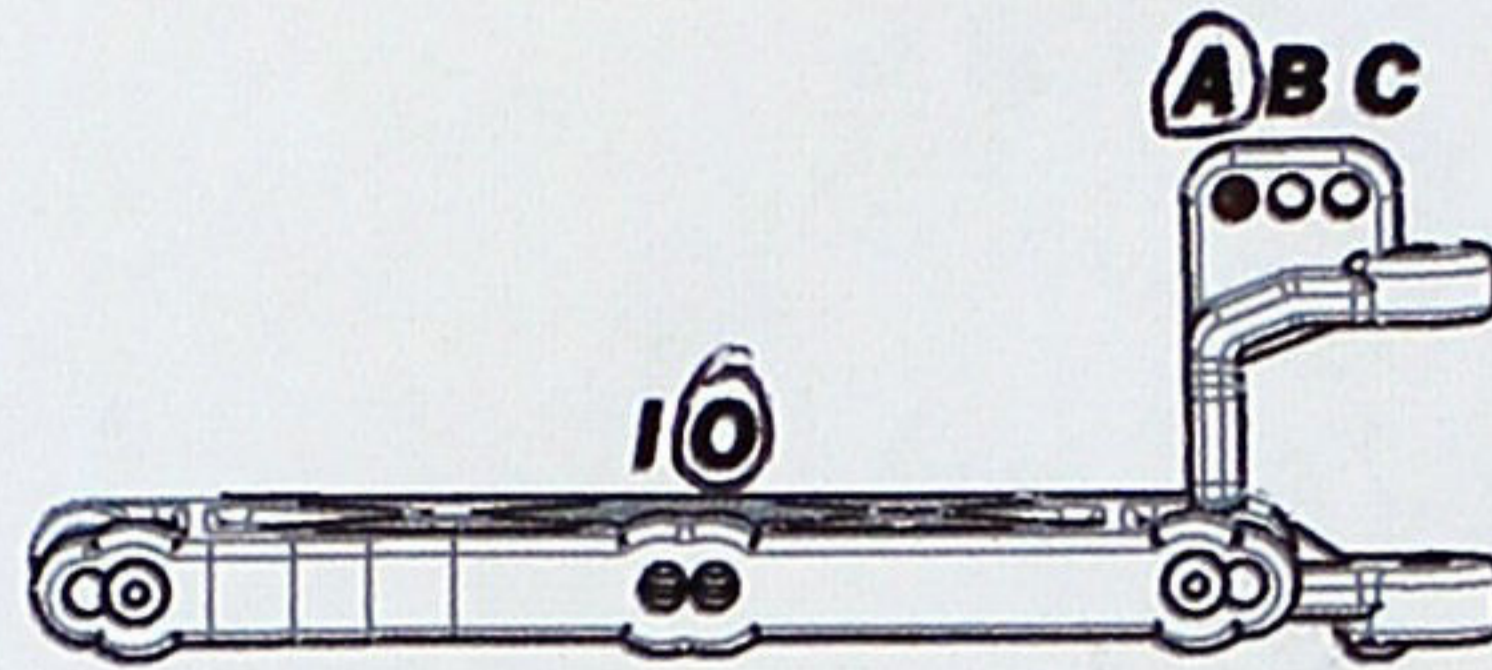
Track: SRS
 Event: Cactus Classic
 Traction: High (sugar)
 Moisture: 0 T°: 85F

Front Suspension



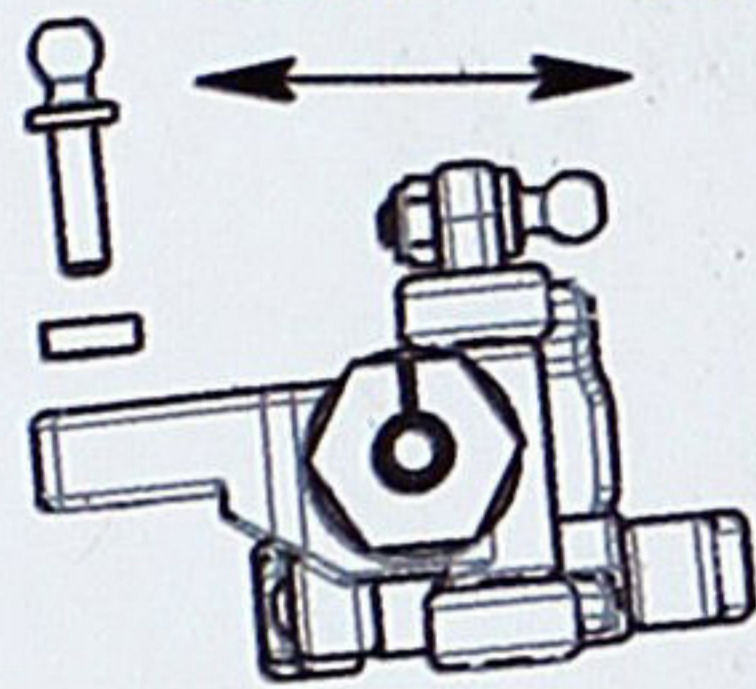
Toe: 1° in
 Camber: -1°
 Ride height: 24mm

Washer: 2 mm



Caster Block Spacing:
 Forward
 Back

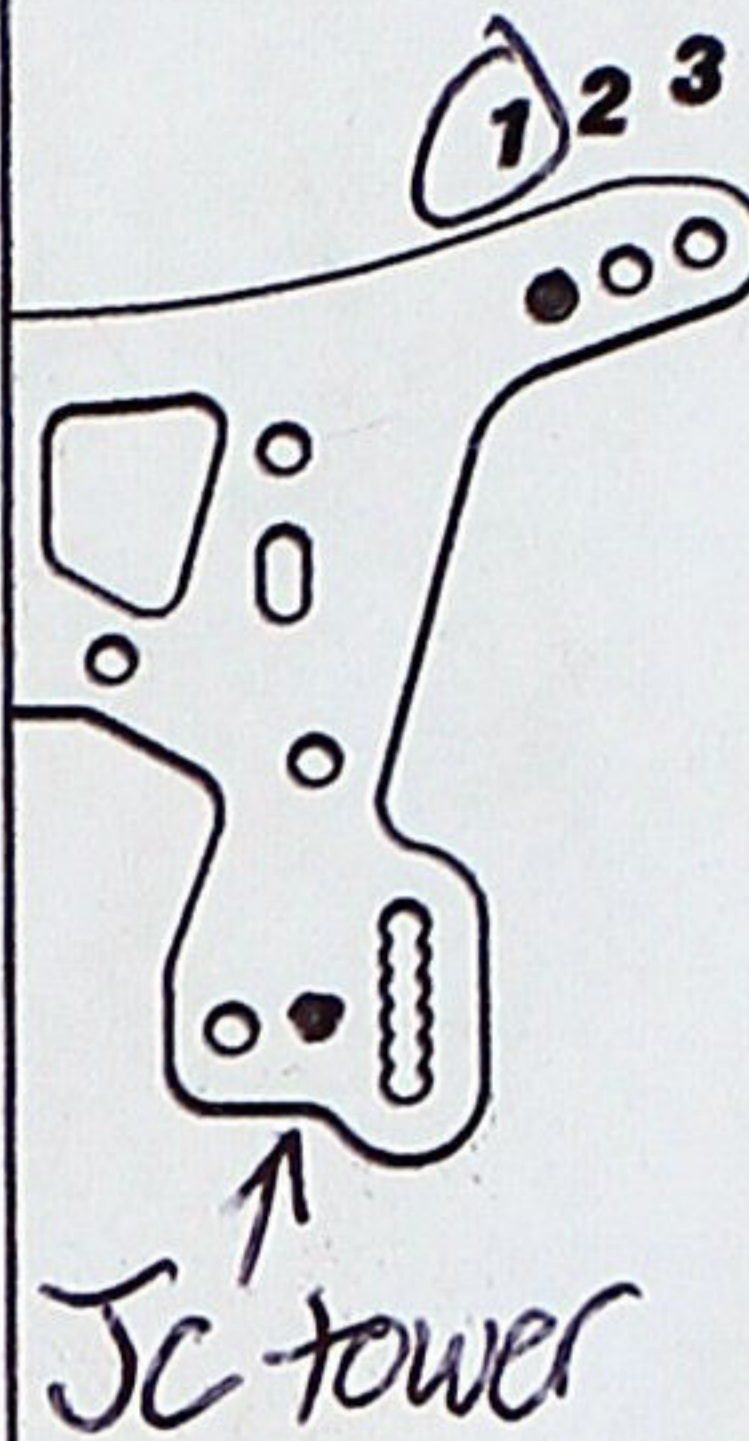
Bumpsteer Washer: 2 mm



Caster:
 20°
 25°
 30°

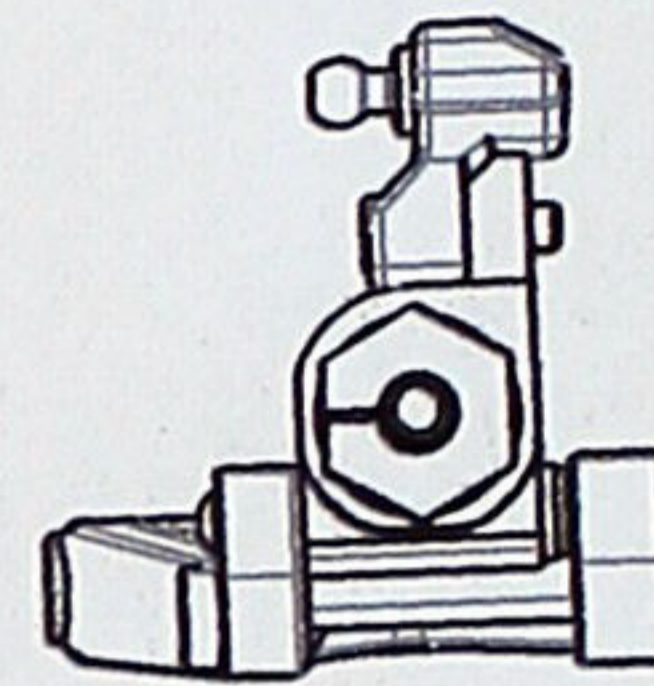
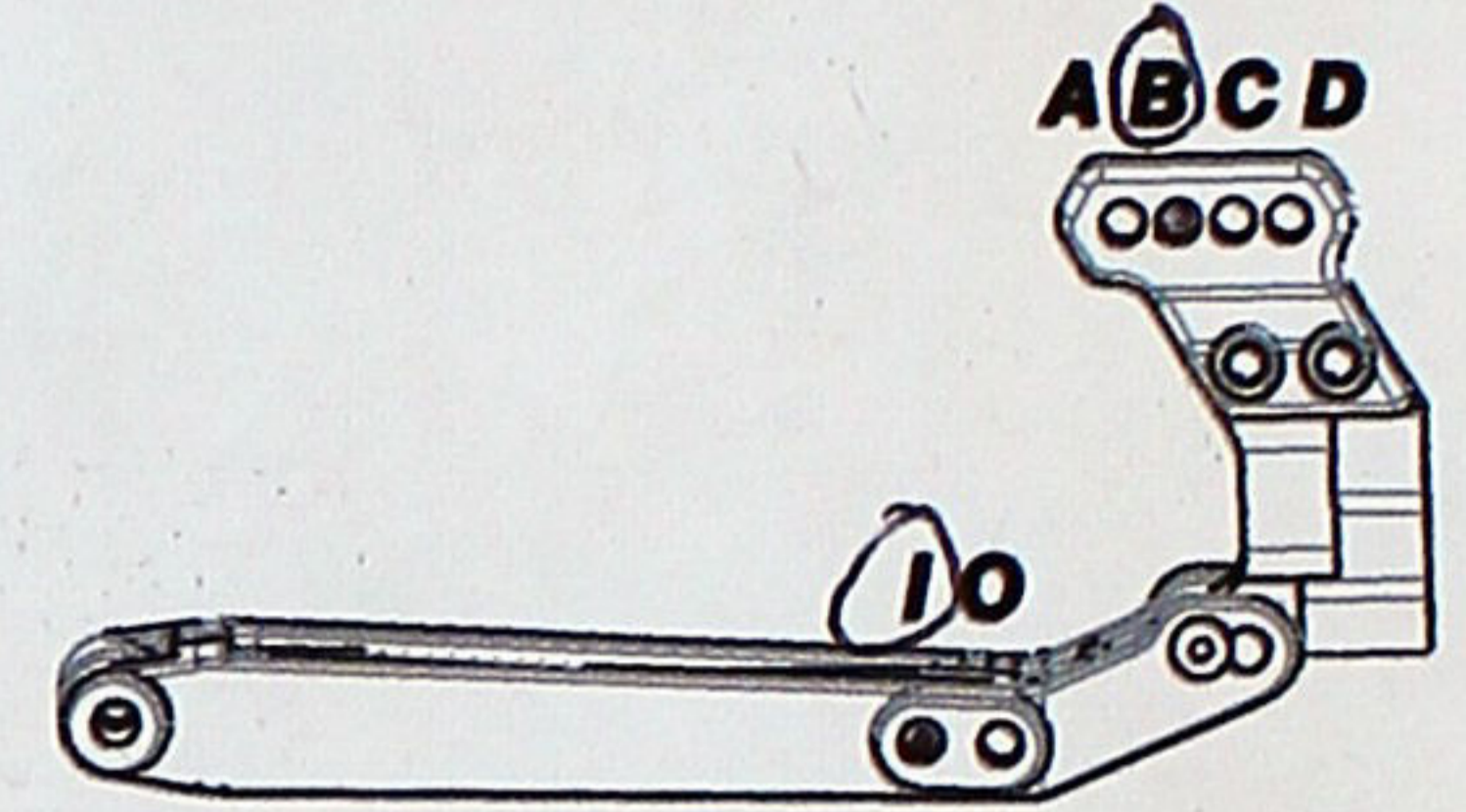


Rear Suspension



Toe: 2.5°
 Camber: -1°
 Ride height: 24mm
 Anti-squat: 2 deg

Rear Hub Carrier:
 0°
 0.5°
 1°
 1.5°



Wheelbase:
 Long
 Medium
 Short

Aluminium Hub Tower:
 A
 B
 C

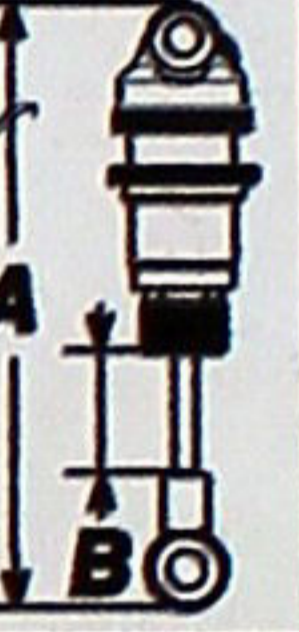
Front Shocks

Shock Oil: 40 TLR Piston: 1.4x3 Taper
 Spring: AE white Limiter: 2x .030
 Shock Length A: — mm Shock Length B: 20.5 mm



Rear Shocks

Shock Oil: 37.5 TLR Piston: 1.4mm x 3 taper
 Spring: AE white Limiter: 1x .030
 Shock Length A: — mm Shock Length B: 26.5 mm



Front Tires

Tire: PL screws
 Compound: X2 Wheel: PL
 Insert: PL closed cell

Rear Tires

Tire: PL suburbs VTR
 Compound: X2 Wheel: VTR PL
 Insert: PL closed cell

Electronics

Motor: Novak Wind: 7.5 Vulcan
 Pinion: 23T Spur Gear: 81T
 Batteries: CRC 5800 Placement: Back
 Radio: M12 Steering Servo: ServoX 1257

Throttle / Brake e.p.a: 100/85
 Throttle / Brake Expo: 0/0
 ESC: Pulse Throttle Profil: 1
 Initial Brake: Drag Brake: 6

Body & Wing

Body: PL Bulldog V2
 Wing: TLR Wing Angle: 6 °
 Comments: —

Differential & Slipper

Gear Differential Oil: 5K TLR
 Ball Differential Setting: —
 Slipper: AE 2 Pads 3 Pads 4 Pads

Race & Car Comments

Qualify: 5th Main: A Finish: —
 Comments: —

Weight Distribution

Bulkhead: Plastic Alloy Brass
 Hinge Pin Brace: Plastic Alloy Brass
 Option Weights: Front Posts Ackerman Under Bellcrank Lipo Holders Rear Arm Mount
 Bulkhead Chassis Brace
 Weights: 5g 10g 15g

